

**LOCKWOOD SURVEY CORPORATION LIMITED**

CONTRACT # G-3174  
FLIGHT # 14  
DATE FLOWN SEPT-15/65  
AIRCRAFT M.L.L.  
FLYING HEIGHT 200'

PROFILES CHART SPEED  
GULF MAGNETOMETER Mk III 4"/MINUTE  
SENSITIVITY 1200  
APN-1 RADIO ALTIMETER \_\_\_\_\_/MINUTE  
SENSITIVITY \_\_\_\_\_

LINE No. 345-N REF

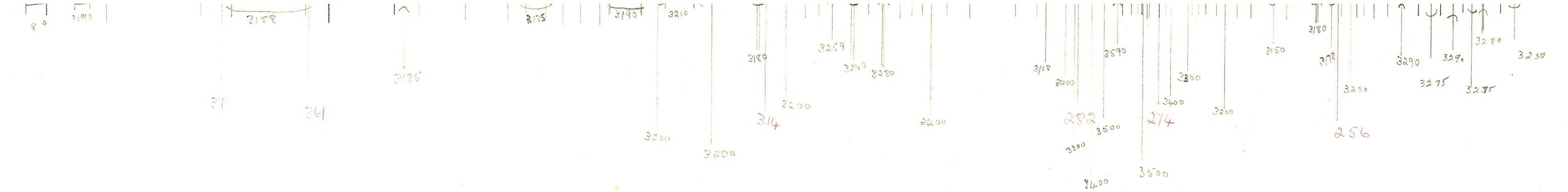
017187

**LOCKWOOD SURVEY CORP., LTD.**  
**ELECTROMAGNETOMETER PROFILES**

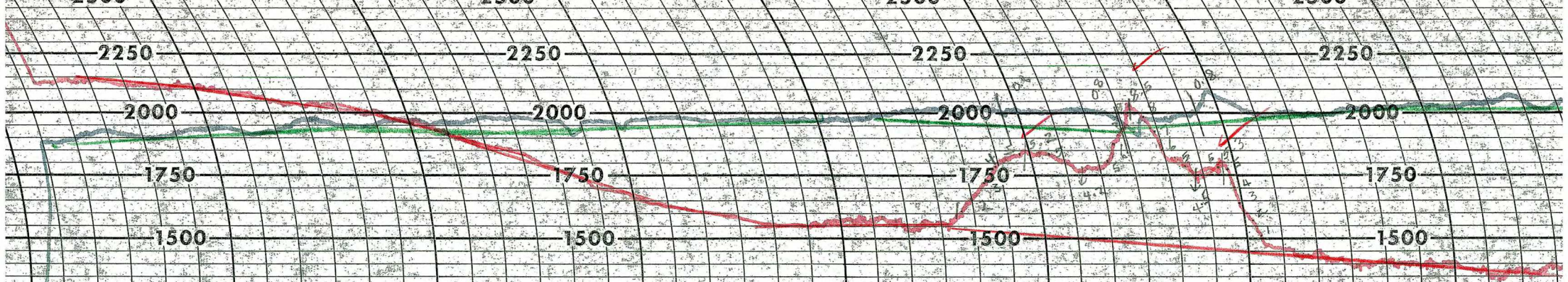
Job No..... Flight No.....  
Date Flown..... Aircraft..... Line No.....  
Sensitivity, In Phase..... Out of Phase.....  
Flying Height..... Bird Height.....  
Tape Speed.....

G-3174  
F-14  
SEPT. 15/65  
L. 345-N  
REF

NC



G-3174  
F-14  
SEPT. 15/65  
L. 345-N  
REF



**LOCKWOOD SURVEY CORP., LTD.**

**ELECTROMAGNETIC FILES**

Job No. *J-314* ... Title *14*  
Date flown *SEPT 18/65* ... Line No. *345-N REF.*  
Sensitivity, In Phase *.0470 F/S* ... Out of Phase *.0490 F/S*  
Flying Height *200'* ... Sight *150'*  
Tape Speed *24 P.M.*

*379*

*370* *361*

*314*

*382*

*256*

*MSK*



379

27

370

341

50

314

300

282

274

256

250

MS 50

to River

3000

25

**LOCKWOOD SURVEY CORP., LTD.**  
**GULF MK 111 AIRBORNE MAGNETOMETER PROFILE**  
 Job No. J-3174 Flight No. 14  
 Date Flown SEPT 15/65 Aircraft MLL Line No. 345-11 R.F.P.  
 Sensitivity Full Scale 1200γ Steps 1000γ  
 Height Flown 200' Tape Speed 4" P.M.