

LOCKWOOD SURVEY CORPORATION LIMITED

CONTRACT # G-3174
FLIGHT # 18
DATE FLOWN Sept 24/65
AIRCRAFT M-L-L
FLYING HEIGHT 200'

PROFILES
GULF MAGNETOMETER Mk III 4" P/MINUTE
SENSITIVITY 1200 X
APN-1 RADIO ALTIMETER...../MINUTE
SENSITIVITY.....

LINE No. 351-5

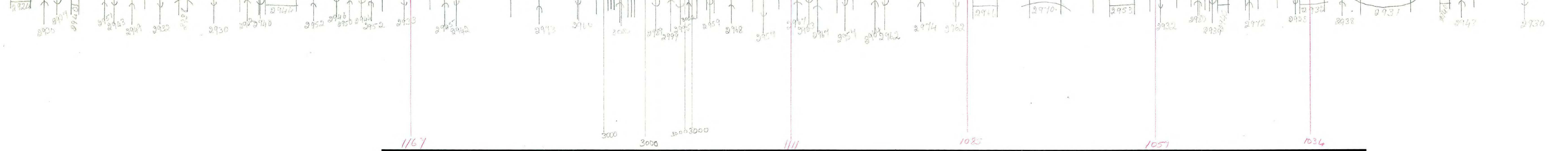
017188

LOCKWOOD SURVEY CORP., LTD.
ELECTROMAGNETOMETER PROFILES.

Job No..... Flight No.....
Date Flown..... Aircraft..... Line No.....
Sensitivity, In Phase..... Out of Phase.....
Flying Height..... Bird Height.....
Tape Speed.....

Job - G-3174
FLE - 18
DUE - Sept 24/65
LN - 351-5

AT



Job - G-3174
FLE - 18
Date - Sept. 24/65
LN - 351-5

1519
1810

1930

21370

1361

50

30008

1307

1290

1292

1250

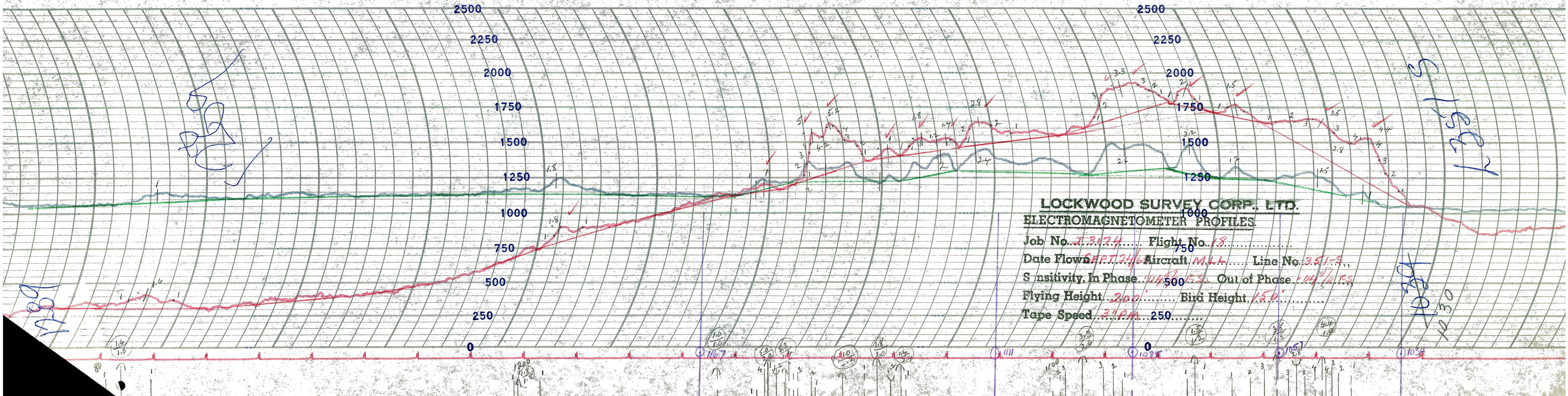
1290

351N

LOCKWOOD SURVEY CORP., LTD.
GULF MK 111 AIRBORNE MAGNETOMETER PROFILE
 Job No. *J-3174* Flight No. *18*
 Date Flown *FEB 24/66* Aircraft *MAL* Line No. *351N*
 Sensitivity Full Scale *1200 γ* Steps *1000 γ*
 Height Flown *1000'* Tape Speed *4" P.M.*

LOCKWOOD SURVEY CORP., LTD.
GULF MK 111 AIRBORNE MAGNETOMETER PROFILE
 Job No. *J-3174* Flight No. *18*
 Date Flown *FEB 24/66* Aircraft *MAL* Line No. *351N*
 Sensitivity Full Scale *1200 γ* Steps *1000 γ*
 Height Flown *1000'* Tape Speed *4" P.M.*

MADE IN CANADA BY MILLTAN CHARTS LTD. FOR LEEDS & NORTHROP CO.



LOCKWOOD SURVEY CORP., LTD.
ELECTROMAGNETOMETER PROFILES.

Job No. J-3174..... Flight No. 18.....
 Date Flown APR 24/6 Aircraft M.L.L...... Line No. 351-S.....
 Sensitivity, In Phase 104.50..... Out of Phase 104.0.....
 Flying Height 300'..... Bird Height 150'.....
 Tape Speed 3.1 PM..... 250.....

mod

1030

1030

1030

1.6
1.0

1.8

1.0
1.0

5.0
3.0

1.0
1.0

1.8
2.0

3.3
2.6

1.0
1.0

1.5
1.2

3.6
1.3

105.1
2.8

1.0
1.0

LOCKWOOD SURVEY CORP., LTD.
ELECTROMAGNETOMETER PROFILES

Job No. I-3174 Flight No. 18
Date Flown SEPT. 24, 1955 Aircraft MAL Line No. 351-N
Sensitivity, In Phase 0.4% F.S. Out of Phase 0.4% F.S.
Flying Height 200' Bird Height 150'
Tape Speed 3" PM

