

**LOCKWOOD SURVEY CORPORATION LIMITED**

CONTRACT # 3174  
FLIGHT # 18  
DATE FLOWN SEPT. - 24-65  
AIRCRAFT CP-MLL  
FLYING HEIGHT 200'

PROFILES  
GULF MAGNETOMETER Mk III 4 /MINUTE  
SENSITIVITY 1200  
APN-1 RADIO ALTIMETER /MINUTE  
SENSITIVITY

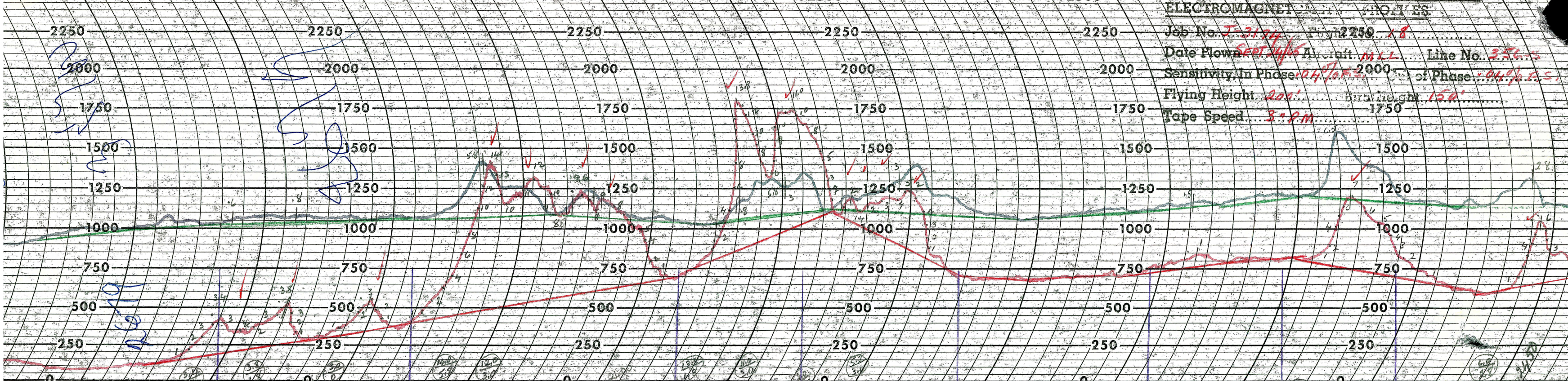
LINE No. 356-S

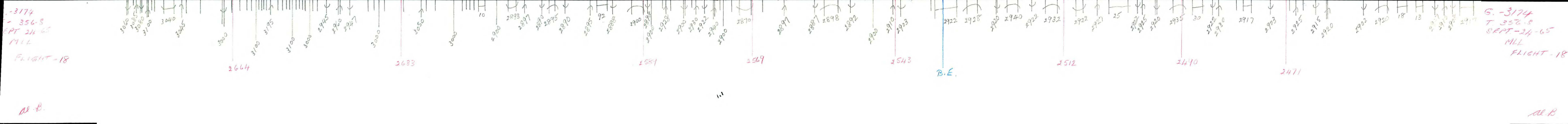
017193

**LOCKWOOD SURVEY CORP., LTD.**  
**ELECTROMAGNETOMETER PROFILES.**

Job No..... Flight No.....  
Date Flown..... Aircraft..... Line No.....  
Sensitivity, In Phase..... Out of Phase.....  
Flying Height..... Bird Height.....  
Tape Speed.....

ELECTROMAGNETIC PROFILES  
Job No. *J-3194* Flight *2250* *x 8*  
Date Flown *SEPT 24/5* Aircraft *M.L.L.* Line No. *3565*  
Sensitivity In Phase *0.4% / 0.5* of Phase *-0.4% / 0.5*  
Flying Height *200'* Air Height *150'*  
Tape Speed *3" P.M.*





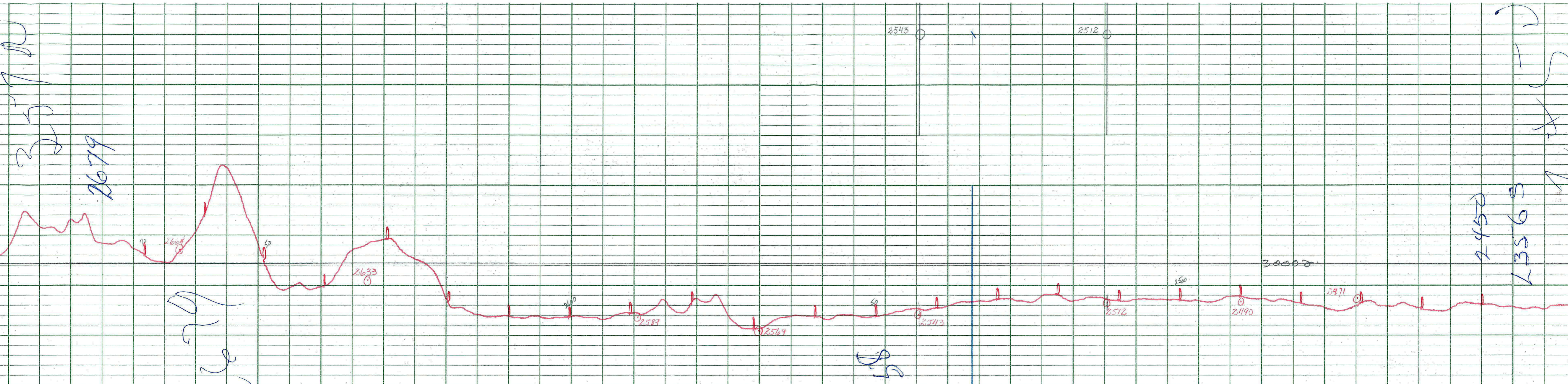
-3174  
- 356-5  
SEPT 24-65  
MLL

FLIGHT-18

A.B.

G. -3174  
T. 356-5  
SEPT-24-65  
MLL  
FLIGHT-18

A.B.



**LOCKWOOD SURVEY CORP., LTD.**  
**GULF MK 111 AIRBORNE MAGNETOMETER PROFILE**  
 Job No. J-3174 Flight No. 18  
 Date Flown SEPT. 24/44 Aircraft M14 Line No. 356-S  
 Sensitivity Full Scale 1200γ Steps 1000γ  
 Height Flown 200' Tape Speed 4" PM

LBE-USED AS C. LINE

**LOCKWOOD SURVEY CORP., LTD.**  
**GULF MK 111 AIRBORNE MAGNETOMETER PROFILE**  
 Job No. J-3174 Flight No. 18  
 Date Flown SEPT. 24/44 Aircraft M14 Line No. 356-S  
 Sensitivity Full Scale 1200γ Steps 1000γ  
 Height Flown 200' Tape Speed 4" PM