

LOCKWOOD SURVEY CORPORATION LIMITED

CONTRACT # G-3174
FLIGHT # 18
DATE FLOWN Sept 24/65
AIRCRAFT M-L-L
FLYING HEIGHT 200'

PROFILES
GULF MAGNETOMETER Mk III 4" P/MINUTE
SENSITIVITY 1200 f
APN-1 RADIO ALTIMETER _____/MINUTE
SENSITIVITY _____

LINE No. 357-N

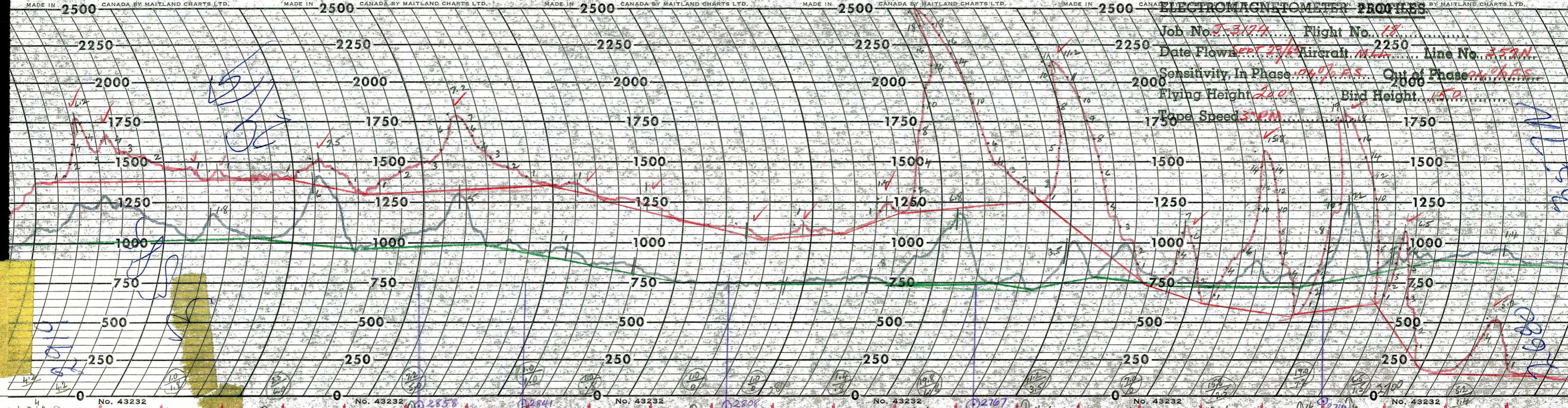
017194

LOCKWOOD SURVEY CORP., LTD.
ELECTROMAGNETOMETER PROFILES.

Job No..... Flight No.....
Date Flown..... Aircraft..... Line No.....
Sensitivity, In Phase..... Out of Phase.....
Flying Height..... Bird Height.....
Tape Speed.....

ELECTROMAGNETOMETER PROFILES

Job No. J-3174 Flight No. 18
 Date Flown SEPT 23/53 Aircraft MIA Line No. 352N
 Sensitivity, In Phase 0.4% Out of Phase 0.6%
 Flying Height 200' Bird Height 150'
 Tape Speed 3" PM



No. 43232

No. 43232

2858

2841

No. 43232

2806

No. 43232

2767

No. 43232

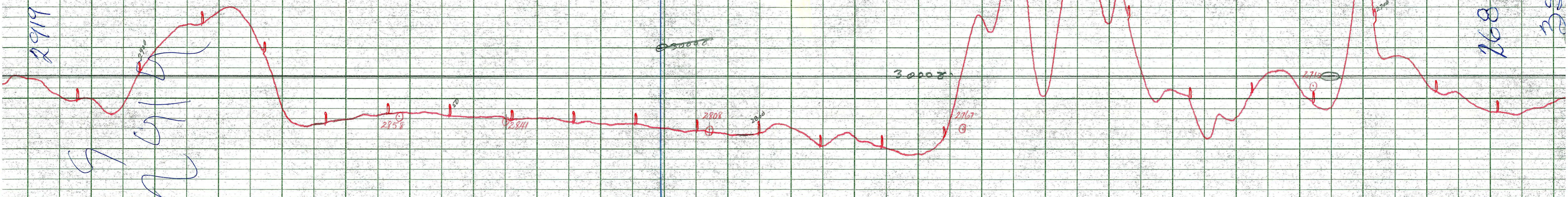
2710

No. 43232

614

F-357

2919



2680

F-357

LOCKWOOD SURVEY CORP., LTD.
 GULF MK 111 AIRBORNE MAGNETOMETER PROFILE
 Job No. J-3174 Flight No. 18
 Date Flown SEPT. 24/60 Aircraft MLL Line No. 357-N
 Sensitivity Full Scale 1200γ Steps 1000γ
 Height Flown 200' Tape Speed 4" PM

LBF BASED ASC. LINE

LOCKWOOD SURVEY CORP., LTD.
 GULF MK 111 AIRBORNE MAGNETOMETER PROFILE
 Job No. J-3174 Flight No. 18
 Date Flown SEPT. 24/60 Aircraft MLL Line No. 357-N
 Sensitivity Full Scale 1200γ Steps 1000γ
 Height Flown 200' Tape Speed 4" PM