

LOCKWOOD SURVEY CORPORATION LIMITED

CONTRACT # 3174
FLIGHT # 18
DATE FLOWN Sept 24-65
AIRCRAFT M.L.L.
FLYING HEIGHT 200 ft.

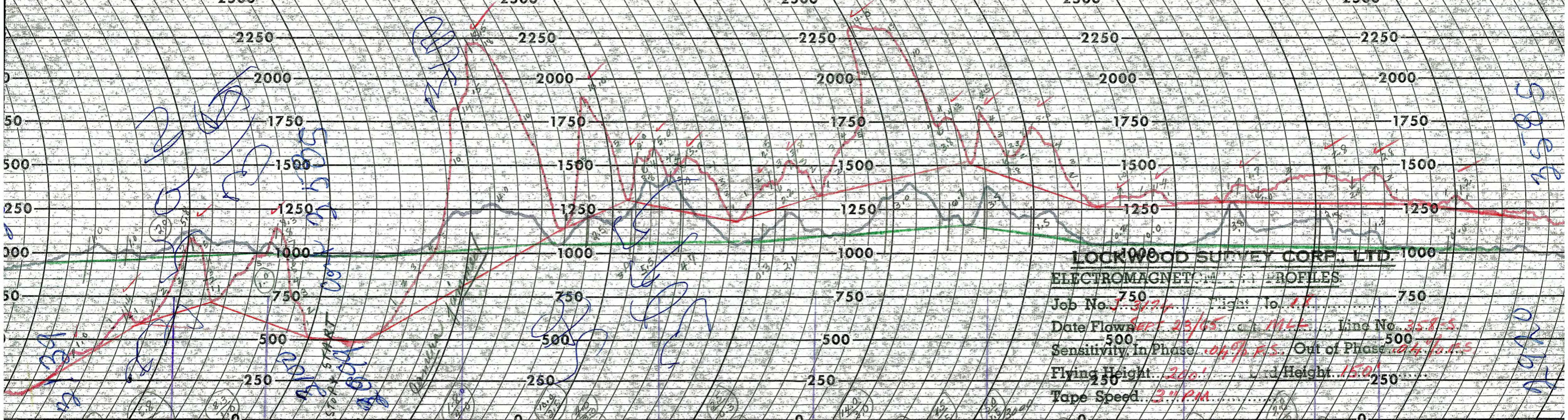
PROFILES
GULF MAGNETOMETER Mk III 4 /MINUTE
SENSITIVITY 1200
APN-1 RADIO ALTIMETER _____ /MINUTE
SENSITIVITY _____

LINE No. 358-S

017195

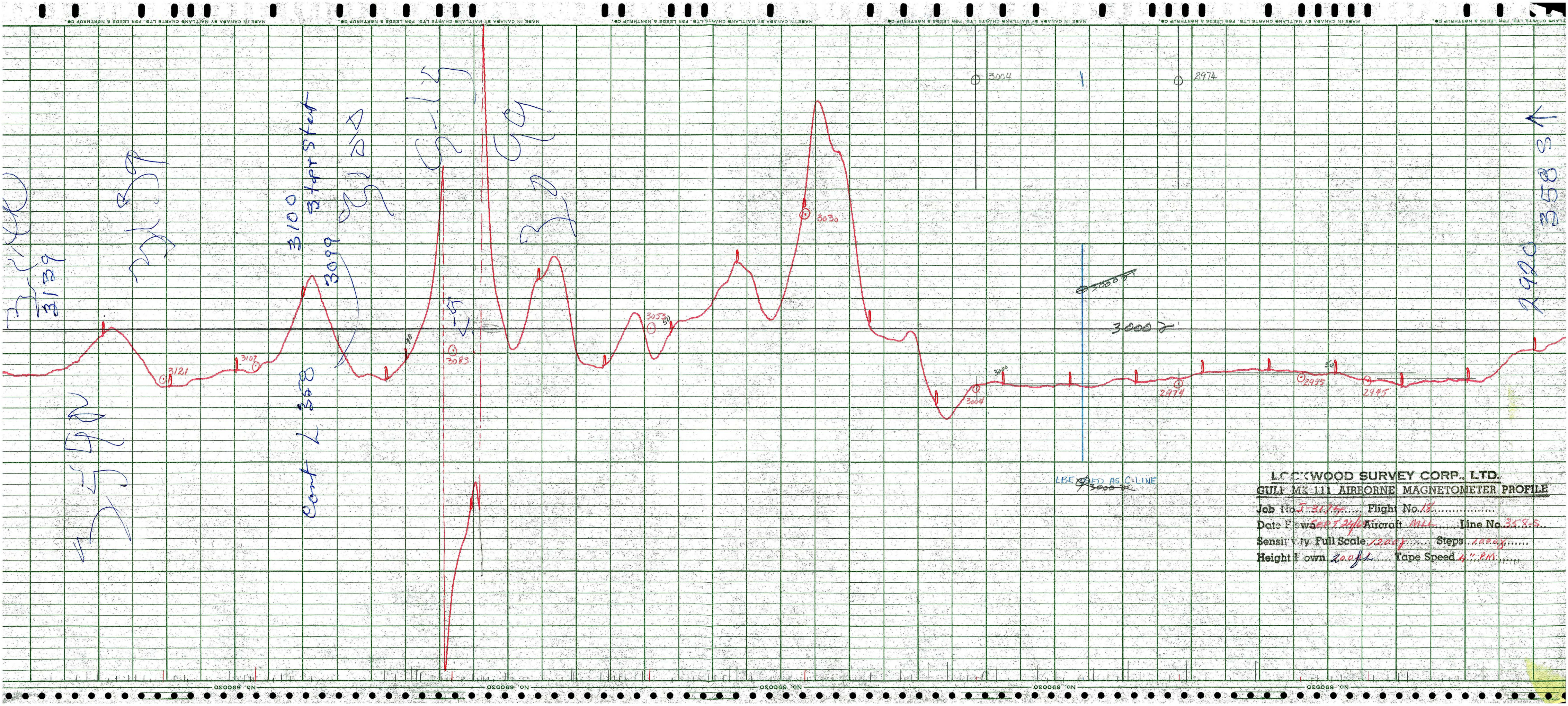
LOCKWOOD SURVEY CORP., LTD.
ELECTROMAGNETOMETER PROFILES.

Job No..... Flight No.....
Date Flown..... Aircraft..... Line No.....
Sensitivity, In Phase..... Out of Phase.....
Flying Height..... Bird Height.....
Tape Speed.....



LOCKWOOD SURVEY CORP., LTD.
ELECTROMAGNETIC PROFILES

Job No. J-3124 Flight No. 11
 Date Flown SEPT 23/65 at 1145 Line No. 3585
 Sensitivity In Phase 104% F.S. Out of Phase 104% F.S.
 Flying Height 200' Lead Height 150'
 Tape Speed 3" P.M.



3121

3100 Stop Start

Cont L 358

3099

3083

3053

3030

3004

3000

2974

2974

2955

2945

2920

358 S ↑

LBE 3000 AS C LINE

LOCKWOOD SURVEY CORP., LTD.
 GULF MK 111 AIRBORNE MAGNETOMETER PROFILE
 Job No. J-3174 Flight No. 18
 Date flown SEPT 24/68 Aircraft MLL Line No. 358.5
 Sensitivity Full Scale 1200 Steps 1000
 Height flown 2000 ft Tape Speed 4" PM