

**LOCKWOOD SURVEY CORPORATION LIMITED**

CONTRACT # G-3174  
FLIGHT # 18  
DATE FLOWN SEPT 24/65  
AIRCRAFT MLL  
FLYING HEIGHT 200'

PROFILES  
GULF MAGNETOMETER Mk III 4"/MINUTE  
SENSITIVITY 1200f  
APN-1 RADIO ALTIMETER         /MINUTE  
SENSITIVITY         

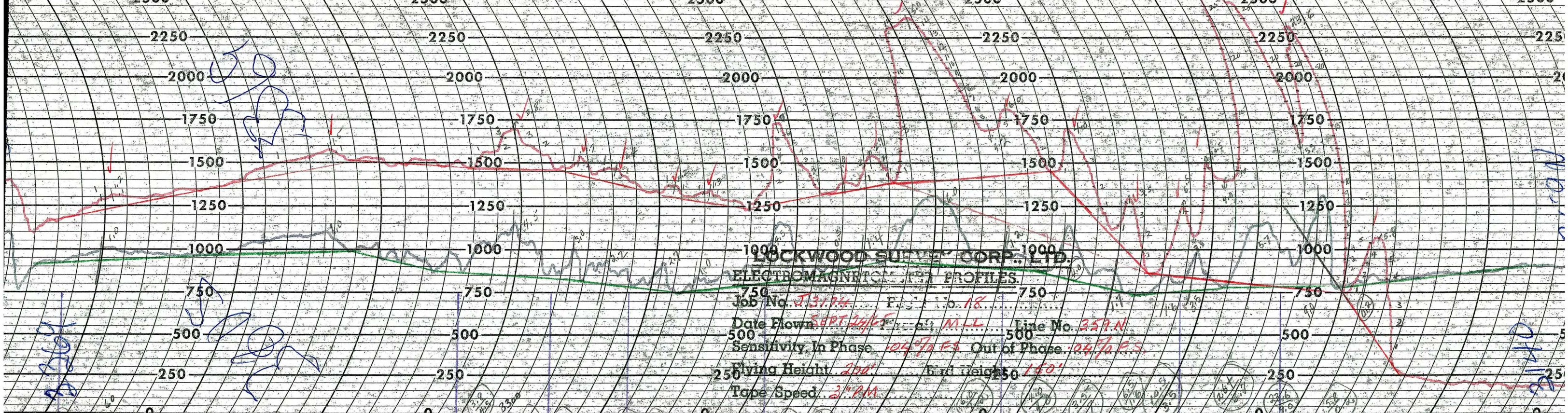
LINE No. 359 N

017196

**LOCKWOOD SURVEY CORP., LTD.**  
**ELECTROMAGNETOMETER PROFILES.**

Job No..... Flight No.....  
Date Flown..... Aircraft..... Line No.....  
Sensitivity, In Phase..... Out of Phase.....  
Flying Height..... Bird Height.....  
Tape Speed.....





LOCKWOOD SURVEY CORP., LTD.  
ELECTROMAGNETIC TFM PROFILES.  
Job No. *J.3174* ..... File No. *18* .....  
Date Flown *SEPT 24/65* ..... Pilot *M.L.L.* ..... Line No. *359 N*  
Sensitivity In Phase *104% F.S.* Out of Phase *104% F.S.*  
Flying Height *200'* ..... Bird Height *50'*  
Tape Speed *3 RPM*

No. 43232

No. 43232

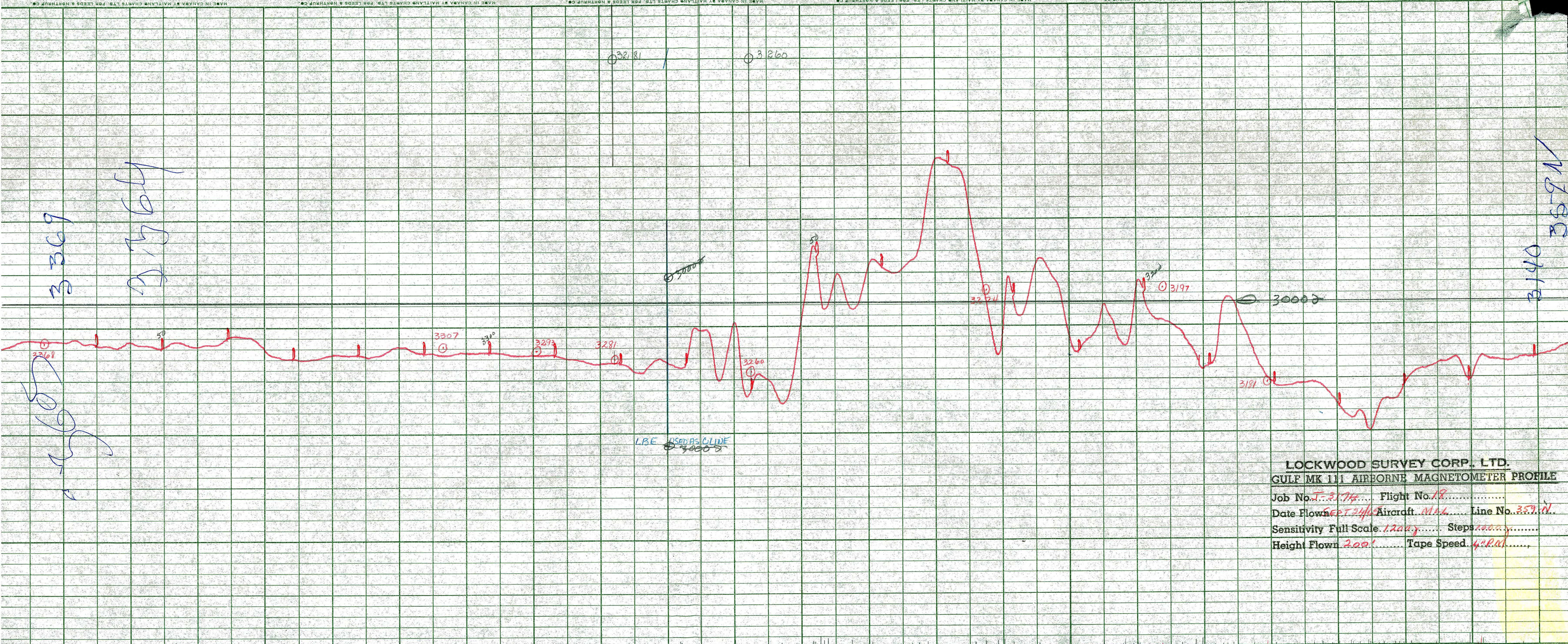
No. 43232

No. 43232

No. 43232

No. 43232

3369  
 31764  
 3368



3281 / 3260

5000

LBE USED AS A LINE  
 3000

**LOCKWOOD SURVEY CORP., LTD.**  
**GULF MK 111 AIRBORNE MAGNETOMETER PROFILE**  
 Job No. J-31714 Flight No. 18  
 Date Flown SEPT 24/65 Aircraft MAL Line No. 359 N  
 Sensitivity Full Scale 1200 Steps 1000  
 Height Flown 200' Tape Speed 4" P.M.

3140 359 N