

**LOCKWOOD SURVEY CORPORATION LIMITED**

CONTRACT # G-3174  
FLIGHT # 18  
DATE FLOWN Sept 24/65  
AIRCRAFT M-L-L  
FLYING HEIGHT 200'

PROFILES  
GULF MAGNETOMETER Mk III 4" P/MINUTE  
SENSITIVITY 1200 8  
APN-1 RADIO ALTIMETER \_\_\_\_\_/MINUTE  
SENSITIVITY \_\_\_\_\_

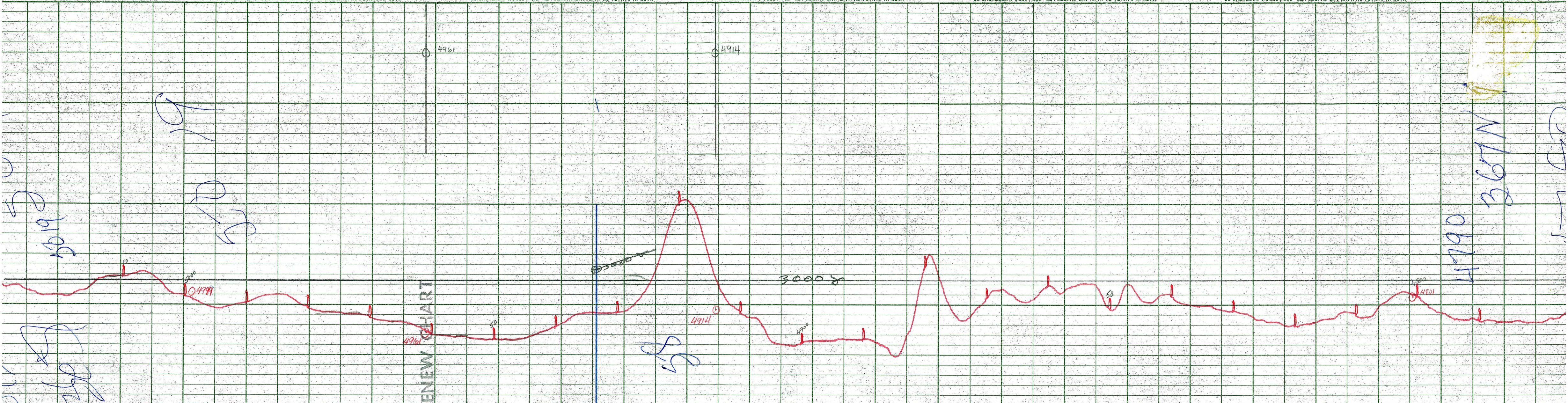
LINE No. 367-N.

017203

**LOCKWOOD SURVEY CORP., LTD.**  
**ELECTROMAGNETOMETER PROFILES.**

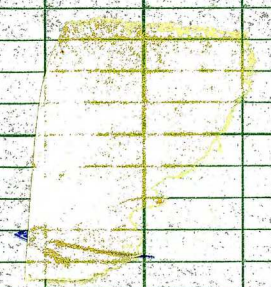
Job No..... Flight No.....  
Date Flown..... Aircraft..... Line No.....  
Sensitivity, In Phase..... Out of Phase.....  
Flying Height..... Bird Height.....  
Tape Speed.....





**LOCKWOOD SURVEY CORP., LTD.**  
**GULF MK 111 AIRBORNE MAGNETOMETER PROFILE**  
 Job No. 5-3174 Flight No. 18  
 Date Flown SEPT 24/65 Aircraft MAL Line No. 367-N  
 Sensitivity Full Scale 1200 γ Steps 1000 γ  
 Height Flown 2000 Tape Speed 4" P.M.

**LOCKWOOD SURVEY CORP., LTD.**  
**GULF MK 111 AIRBORNE MAGNETOMETER PROFILE**  
 Job No. 5-3174 Flight No. 18  
 Date Flown SEPT 24/65 Aircraft MAL Line No. 367-N  
 Sensitivity Full Scale 1200 γ Steps 1000 γ  
 Height Flown 2000 Tape Speed 4" P.M.



0625H  
4790  
367-N

