

LOCKWOOD SURVEY CORPORATION LIMITED

CONTRACT # G-3174
FLIGHT # 18
DATE FLOWN SEPT 24/65
AIRCRAFT N44
FLYING HEIGHT 200'

PROFILES
GULF MAGNETOMETER Mk III 1 1/2 "/MINUTE
SENSITIVITY 1200x
APN-1 RADIO ALTIMETER _____ /MINUTE
SENSITIVITY _____

CHART SPEED _____ LINE No. 368-N

017205

LOCKWOOD SURVEY CORP., LTD.
ELECTROMAGNETOMETER PROFILES.

Job No..... Flight No.....
Date Flown..... Aircraft..... Line No.....
Sensitivity, In Phase..... Out of Phase.....
Flying Height..... Bird Height.....
Tape Speed.....

LOCKWOOD SURV. CORP. LTD.

ELECTROMAGNET METE. PROFILES

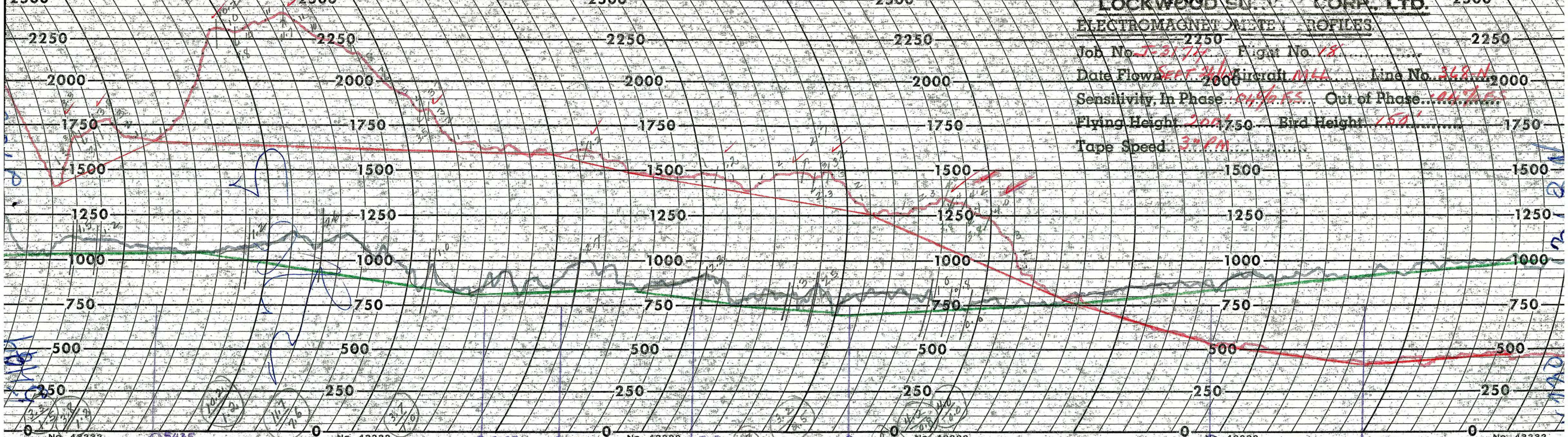
Job No. *J-3174* Flight No. *18*

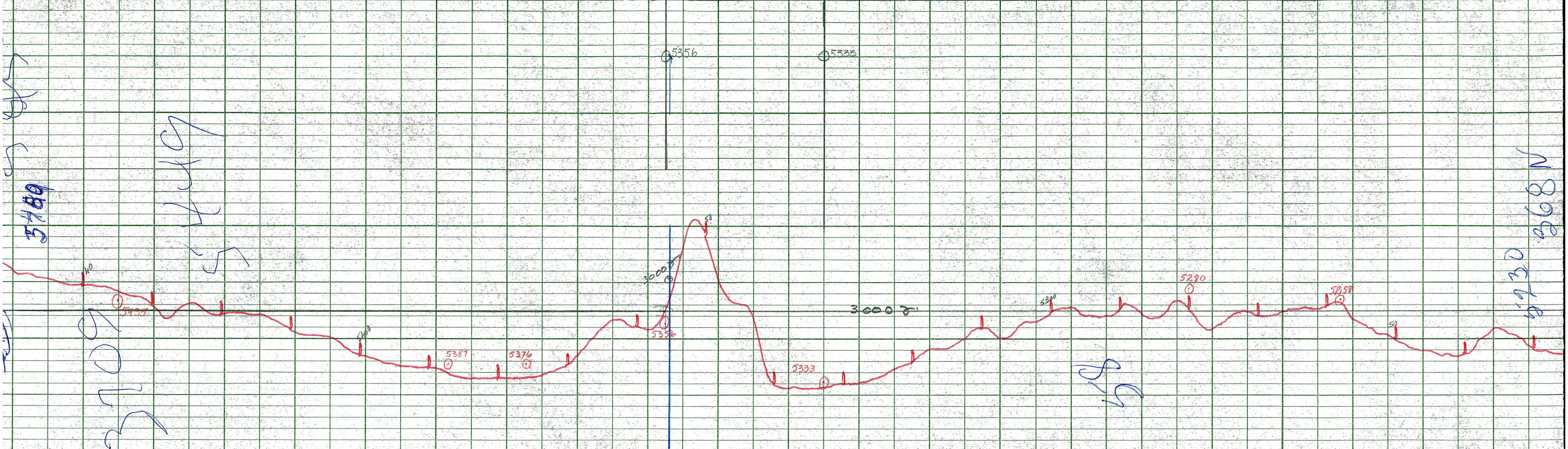
Date flown *SEPT 30 1954* Aircraft *M44* Line No. *368-N*

Sensitivity, In Phase *0.4% F.S.* Out of Phase *0.4% F.S.*

Flying Height *2000'* Bird Height *150'*

Tape Speed *3" PM*





LOCKWOOD SURVEY CORP. LTD.

GULF MK 111 AIRBORNE MAGNETOMETER PROFILE

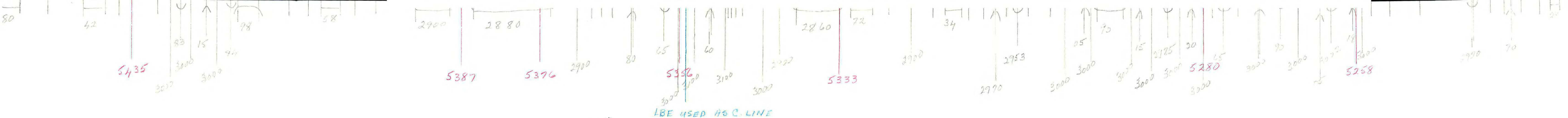
Job No. F. 21.76 Flight No. 18

Date Flown SEPT 24/65 Aircraft M4 Line No. 368-N

Sensitivity Full Scale 1.200γ Steps 10.00γ

Height Flown 200' Tape Speed 4" P.M.

G-3174
T-368-N
SEPT 24/65
FLT 18



G-3174
T-368-N
SEPT 24/65
FLT 18

11B