

LOCKWOOD SURVEY CORPORATION LIMITED

CONTRACT # C 3174
FLIGHT # Nº 19
DATE FLOWN Sept 25/65
AIRCRAFT M L L
FLYING HEIGHT 200

PROFILES
GULF MAGNETOMETER Mk III 4 /MINUTE
SENSITIVITY
APN-1 RADIO ALTIMETER /MINUTE
SENSITIVITY 1200

LINE No. 372 N

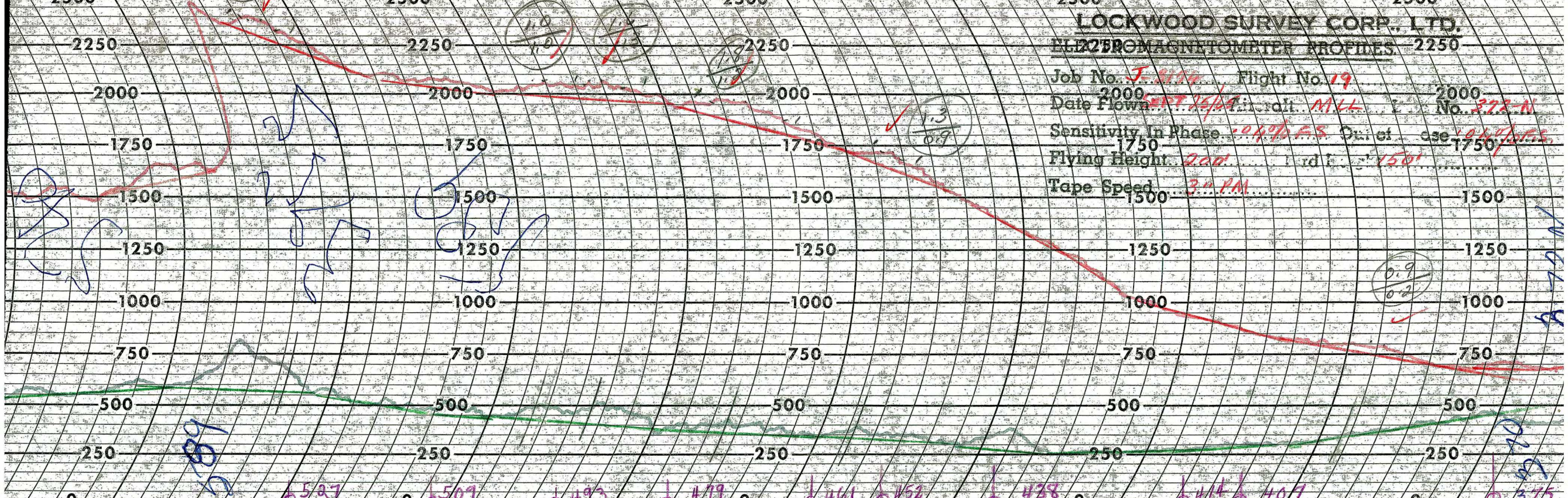
017208

LOCKWOOD SURVEY CORP., LTD.
ELECTROMAGNETOMETER PROFILES.

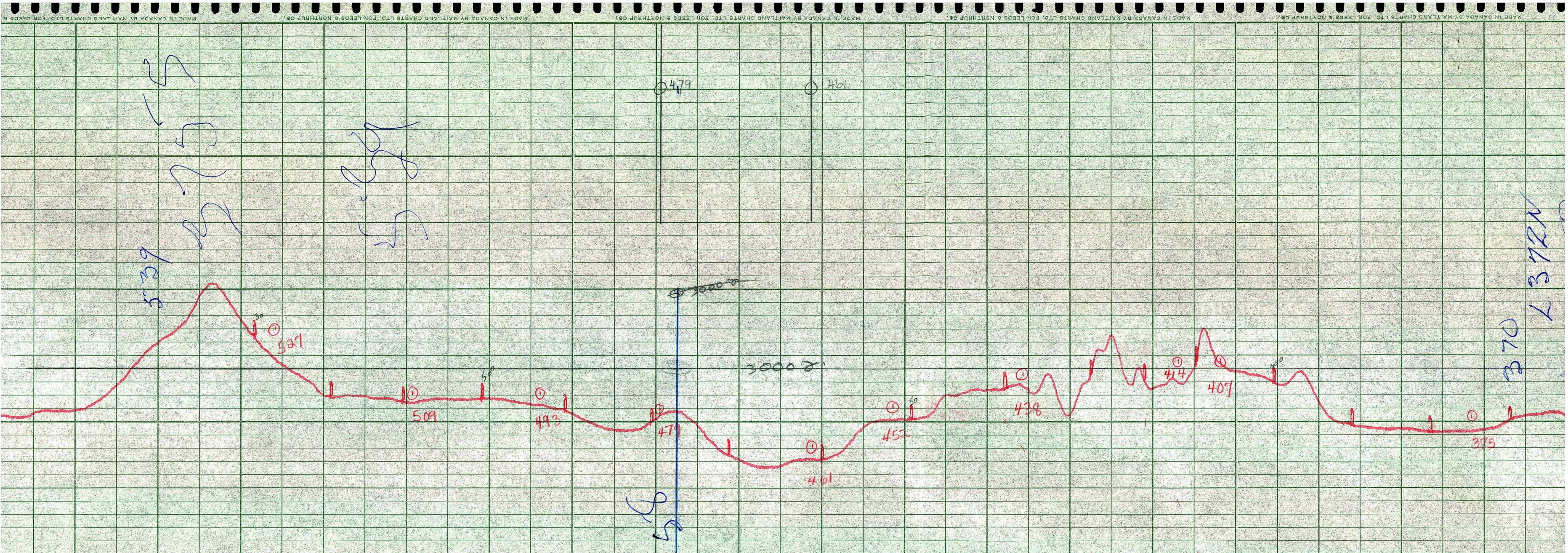
Job No..... Flight No.....
Date Flown..... Aircraft..... Line No.....
Sensitivity, In Phase..... Out of Phase.....
Flying Height..... Bird Height.....
Tape Speed.....

MADE IN CANADA BY MAITLAND CHARTS LTD. 2500 MADE IN CANADA BY MAITLAND CHARTS LTD. 2500 MADE IN CANADA BY MAITLAND CHARTS LTD. 2500 MADE IN CANADA BY MAITLAND CHARTS LTD. 2500 MADE IN CANADA BY MAITLAND CHARTS LTD. 2500

LOCKWOOD SURVEY CORP., LTD.
ELIZBROM MAGNETOMETER PROFILES
Job No. *J. 5170* Flight No. *19*
Date Flown *2000* ~~PT 12/04~~ Alt. *ALL* No. *373-N*
Sensitivity In Phase *0.00%* ~~0.00%~~ *0.00%* ~~0.00%~~
Flying Height *200'* ~~150'~~ *150'*
Tape Speed *3" PM*



No. 43232 *1.3/0.5* *527* No. 43232 *1.0/1.0* *507* No. 43232 *1.3/0.9* *493* No. 43232 *1.3/0.9* *479* No. 43232 *1.3/0.9* *461* *452* No. 43232 *1.3/0.9* *438* No. 43232 *1.3/0.9* *414* *407* No. 43232 *1.3/0.9* *375*



LOCKWOOD SURVEY CORP., LTD.
GULF MK 111 AIRBORNE MAGNETOMETER PROFILE

Job No. *J.3.174*..... Flight No. *19*.....
 Date Flown *SEPT. 25/65* Aircraft *MAL*..... Line No. *372 N*.....
 Sensitivity Full Scale *1200γ*..... Steps *1000γ*.....
 Height Flown *1000 ± 20* Tape Speed *4 RPM*.....

