

**LOCKWOOD SURVEY CORPORATION LIMITED**

CONTRACT # 2 3174  
FLIGHT # No. 19  
DATE FLOWN Sept 25/65  
AIRCRAFT MH  
FLYING HEIGHT 200

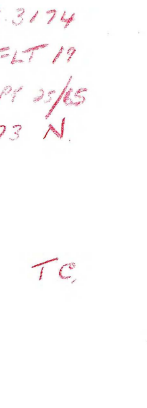
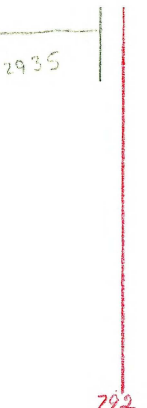
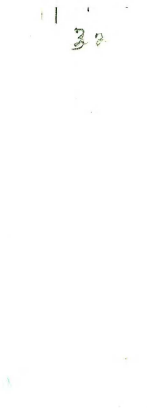
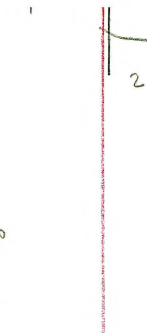
PROFILES  
GULF MAGNETOMETER Mk III 4 /MINUTE  
SENSITIVITY .....  
APN-1 RADIO ALTIMETER ..... /MINUTE  
SENSITIVITY 1200

LINE No. 393-N.  
  
**017209**

**LOCKWOOD SURVEY CORP., LTD.**  
**ELECTROMAGNETOMETER PROFILES.**

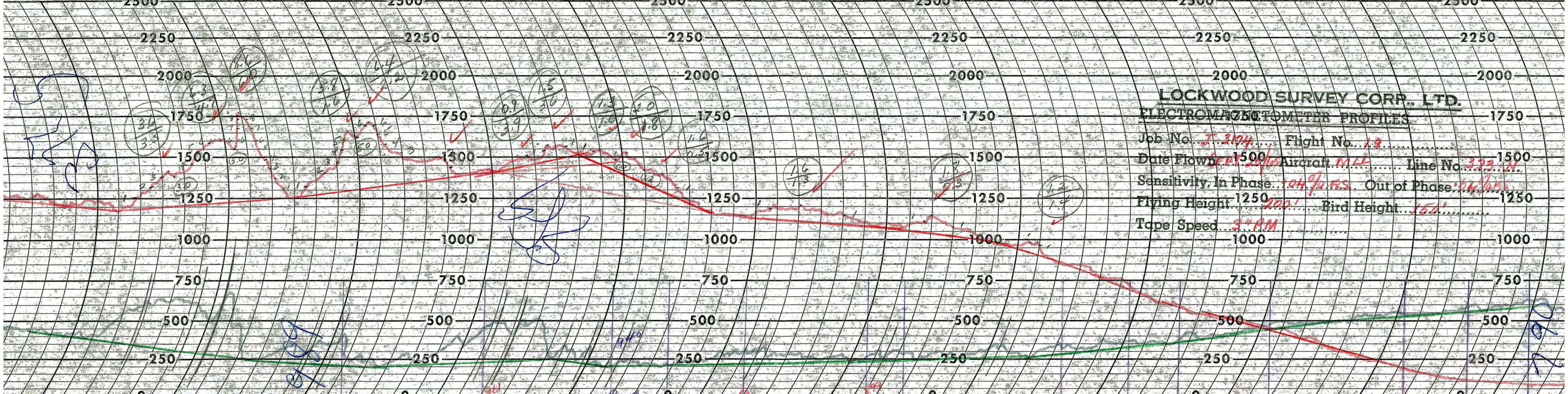
Job No..... Flight No.....  
Date Flown..... Aircraft..... Line No.....  
Sensitivity, In Phase..... Out of Phase.....  
Flying Height..... Bird Height.....  
Tape Speed.....

Q 3174  
FLT 19  
SEPT 25/65  
373-N

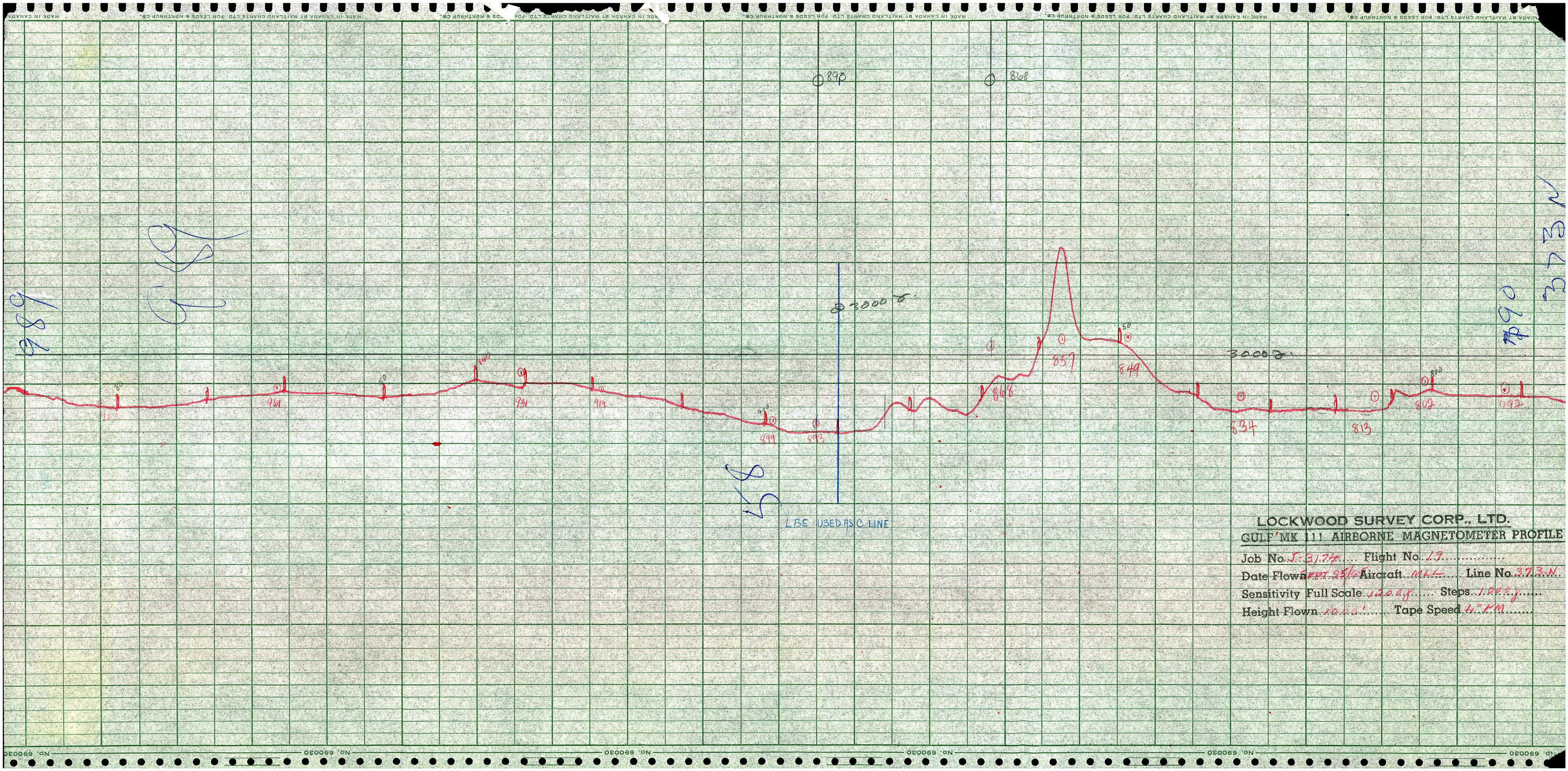


Q 3174  
FLT 19  
SEPT 25/65  
373-N

TC



**LOCKWOOD SURVEY CORP., LTD.**  
**ELECTROMAGNETOMETER PROFILES**  
 Job No. *J-3174* Flight No. *13*  
 Date Flown *Feb 15/50* Aircraft *M-12* Line No. *373-N*  
 Sensitivity, In Phase *104% FS* Out of Phase *14% FS*  
 Flying Height *1250'* Bird Height *150'*  
 Tape Speed *3" PM*



**LOCKWOOD SURVEY CORP., LTD.**  
**GULF MK 111 AIRBORNE MAGNETOMETER PROFILE**  
 Job No. *J-3174* Flight No. *19*  
 Date Flown *SEPT. 25/65* Aircraft *M44* Line No. *373-N*  
 Sensitivity Full Scale *120.0 G* Steps *1.00 G*  
 Height Flown *10,000'* Tape Speed *4" PM*