

LOCKWOOD SURVEY CORPORATION LIMITED

CONTRACT # G-3174
FLIGHT # 19
DATE FLOWN Sept 25/65
AIRCRAFT M.L.L
FLYING HEIGHT 200'

PROFILES
GULF MAGNETOMETER Mk III 4" / MINUTE
SENSITIVITY 12008
APN-1 RADIO ALTIMETER...../MINUTE
SENSITIVITY.....

LINE No. 378-N

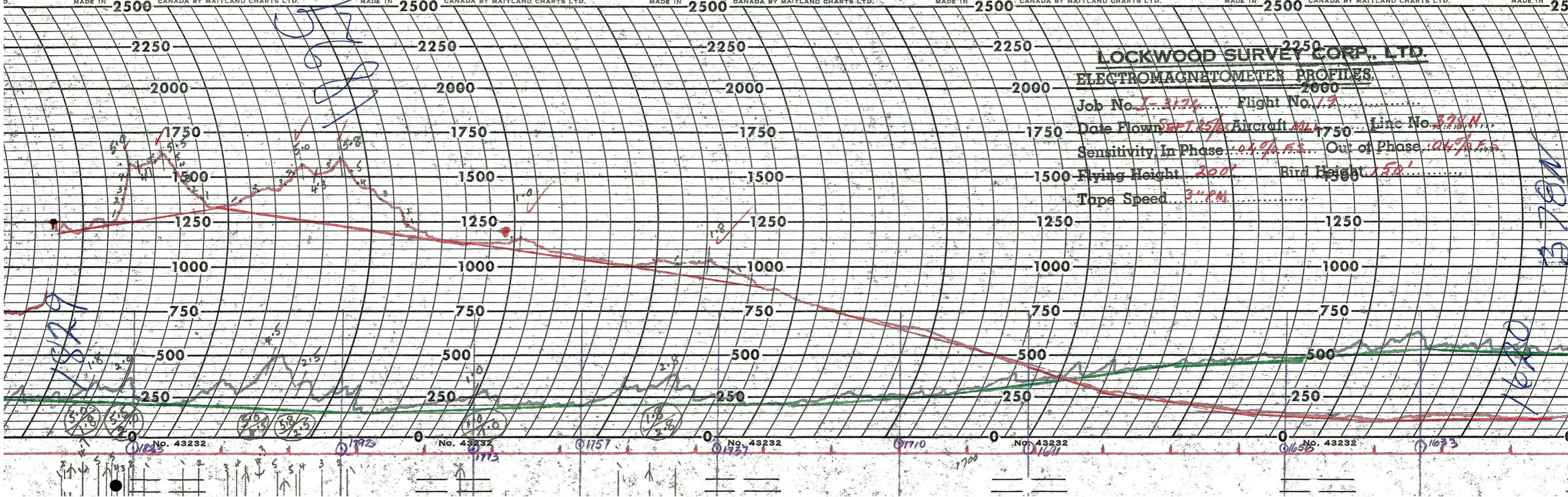
017214

LOCKWOOD SURVEY CORP., LTD.
ELECTROMAGNETOMETER PROFILES.

Job No..... Flight No.....
Date Flown..... Aircraft..... Line No.....
Sensitivity, In Phase..... Out of Phase.....
Flying Height..... Bird Height.....
Tape Speed.....

LOCKWOOD SURVEY CORP. LTD.
ELECTROMAGNETOMETER PROFILES.

Job No. J-3174 Flight No. 19
Date Flown SEPT. 25/48 Aircraft MLL Line No. 378N
Sensitivity, In Phase: .04% F.S. Out of Phase: .04% F.S.
Flying Height: 200' Bird Height: 150'
Tape Speed: 3" PM

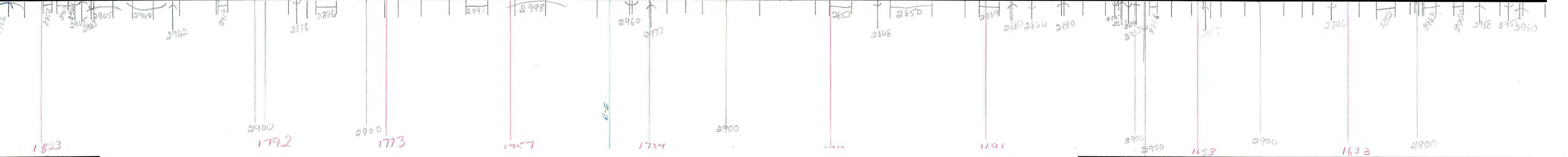


UP

DOWN

Stationing and data markers along the bottom axis:
No. 43232 (circled) 1792
No. 43232 (circled) 1773
1757
No. 43232 (circled) 1737
1710
No. 43232 (circled) 1697
1700
No. 43232 (circled) 1655
1633

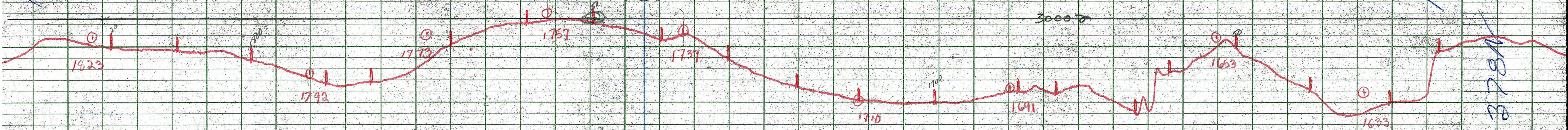
Job - G-3174
Flt. - 19
Date - 25/65
LN - 348-N.



Job - G-3174
Flt. - 19
Date - 25/65
LN. - 348-N.

AT

1819
1818
1817



LBE IS ED AS C LINE

3000

LOCKWOOD SURVEY CORP., LTD.
GULF MK III AIRBORNE MAGNETOMETER PROFILE
Job No. F-3174 Flight No. 19
Date Flown SEP 25/65 Aircraft M.A. 4 Line No. 378 A
Sensitivity Full Scale 1200 G Steps 12.00 G
Height Flown 14000 Tape Speed 1.5 P.M.

1620

1818

1819