

LOCKWOOD SURVEY CORPORATION LIMITED

CONTRACT # 3174
FLIGHT # 19
DATE FLOWN Sept 25-65
AIRCRAFT MLh
FLYING HEIGHT 200'

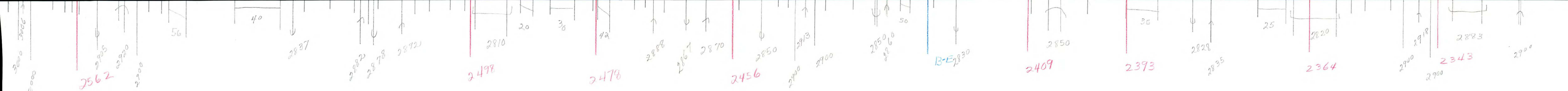
PROFILES
GULF MAGNETOMETER Mk III 4/MINUTE
SENSITIVITY 1200
APN-1 RADIO ALTIMETER /MINUTE
SENSITIVITY

LINE No. 382-5

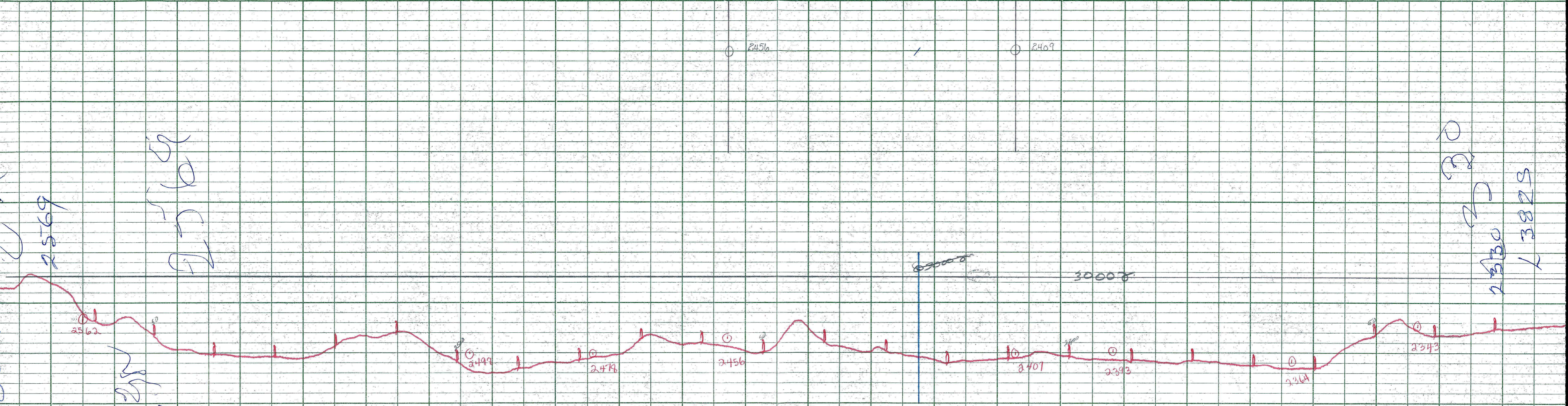
017218

LOCKWOOD SURVEY CORP., LTD.
ELECTROMAGNETOMETER PROFILES.

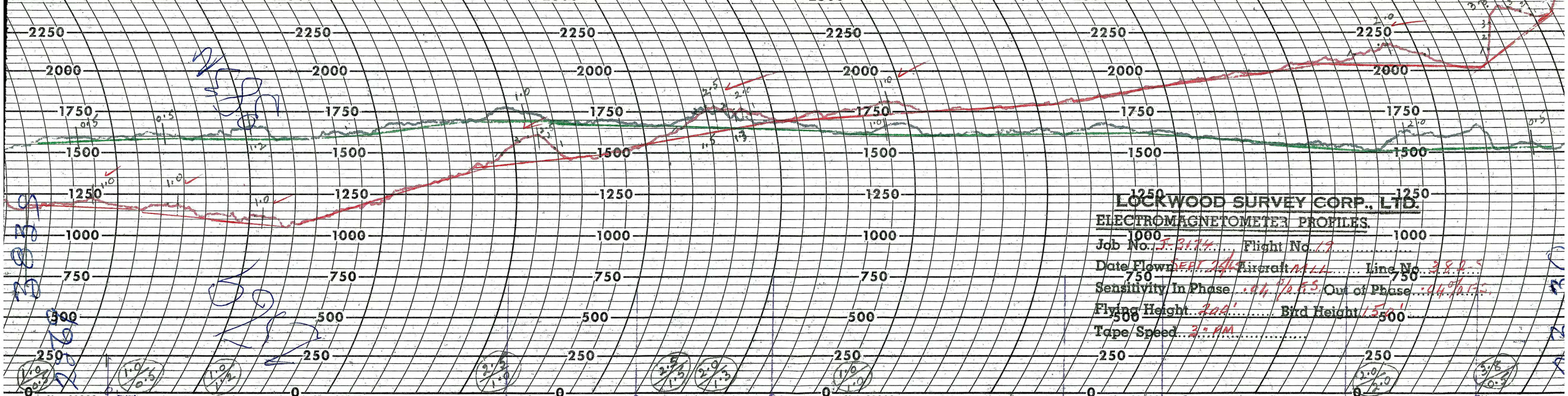
Job No..... Flight No.....
Date Flown..... Aircraft..... Line No.....
Sensitivity, In Phase..... Cut of Phase.....
Flying Height..... Bird Height.....
Tape Speed.....



G 3174
 Sept 25-65
 T 382 S
 data in



LOCKWOOD SURVEY CORP., LTD.
 GULF MK II AIRBORNE MAGNETOMETER PROFILE
 Job No. J-3174 Flight No. 19
 Date Flown SEPT 25/60 Aircraft M-41 Line No. 3829
 Sensitivity Full Scale 1200 γ Steps 100 γ
 Height Flown 2000 ft Tape Speed 4" PM



LOCKWOOD SURVEY CORP., LTD.
ELECTROMAGNETOMETER PROFILES.

Job No. J-3174 Flight No. 19
Date Flown FEB 24/60 Aircraft M.L.L. Line No. 389-5
Sensitivity In Phase .04% Out of Phase .015%
Flying Height 200' Bird Height 150'
Tape Speed 30 AM

