

LOCKWOOD SURVEY CORPORATION LIMITED

CONTRACT # G 3174
FLIGHT # 19
DATE FLOWN Sept 25/65
AIRCRAFT MLL
FLYING HEIGHT 200

PROFILES
GULF MAGNETOMETER Mk III 4 /MINUTE
SENSITIVITY 1200
APN-1 RADIO ALTIMETER...../MINUTE
SENSITIVITY.....

LINE No. 383-N

017219

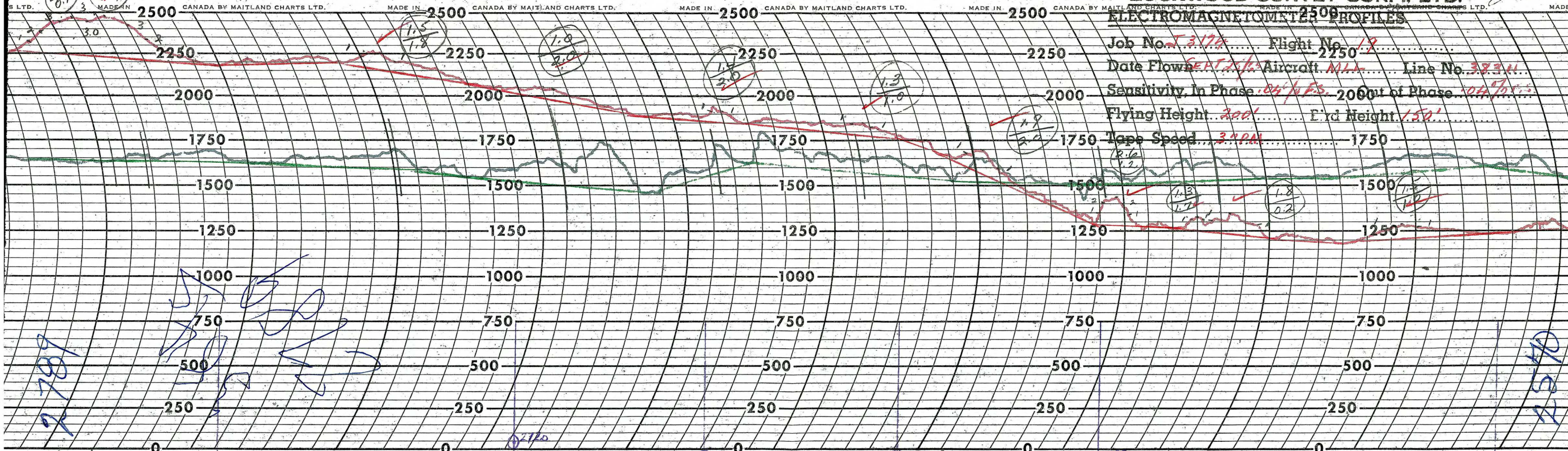
LOCKWOOD SURVEY CORP., LTD.
ELECTROMAGNETOMETER PROFILES.

Job No..... Flight No.....
Date Flown..... Aircraft..... Line No.....
Sensitivity, In Phase..... Out of Phase.....
Flying Height..... Bird Height.....
Tape Speed.....

LOCKWOOD SURVEY CORP., LTD.

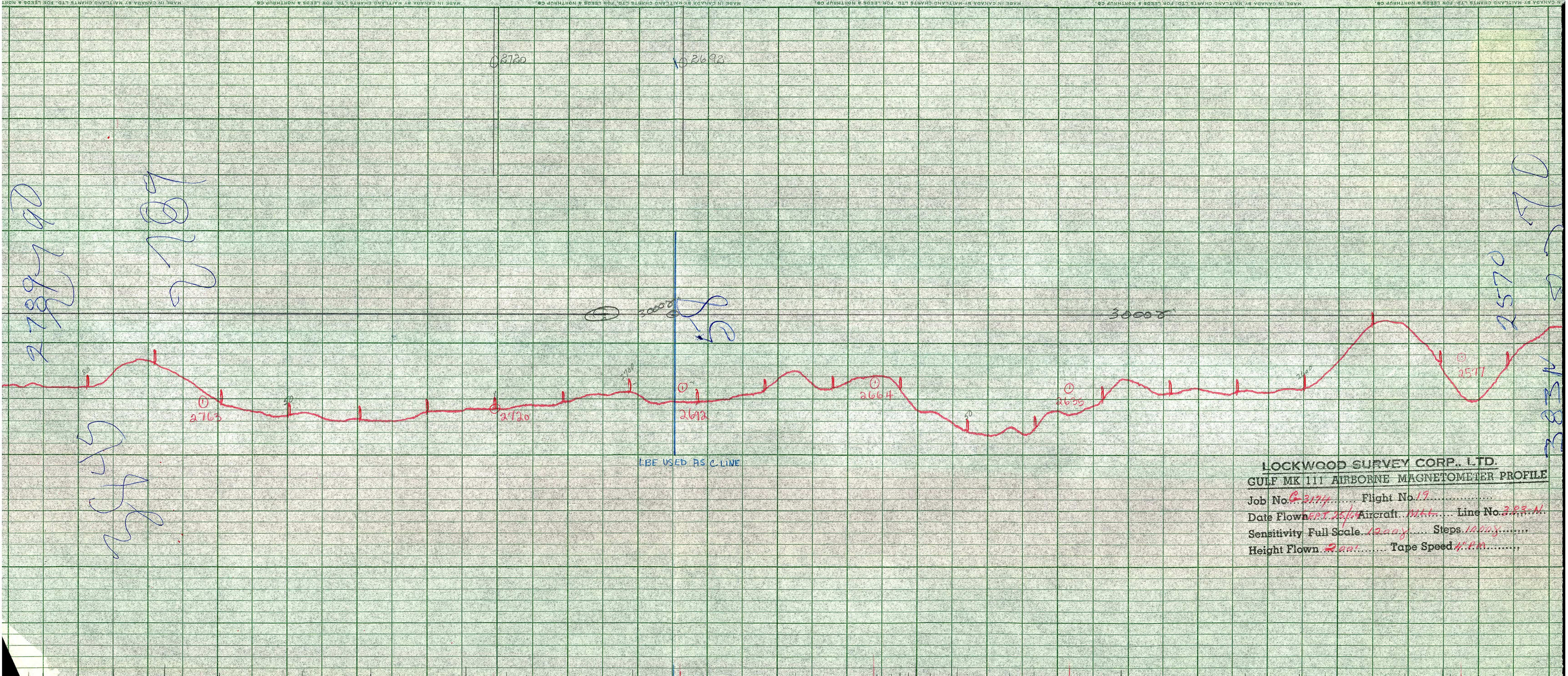
ELECTROMAGNETOMETER PROFILES

Job No. 5317 Flight No. 19
 Date Flown SEPT 25/52 Aircraft MIL Line No. 38311
 Sensitivity In Phase 04/10 FS 2000 ft of Phase 04/10 FS
 Flying Height 200' E'rd Height 150'
 Tape Speed 3.9 P.M.



$\frac{3.3}{0.1}$ $\frac{3.6}{0.7}$

No. 43232 $\frac{3.3}{0.1}$ $\frac{3.6}{0.7}$ 2703 $\frac{1.5}{1.8}$ No. 43232 $\frac{1.0}{2.0}$ 2120 $\frac{1.4}{2.0}$ No. 43232 $\frac{1.3}{1.0}$ 2697 $\frac{2.6}{1.2}$ $\frac{1.8}{0.2}$ No. 43232 $\frac{2.6}{1.2}$ $\frac{1.8}{0.2}$ 2577 $\frac{2.0}{1.0}$



LOCKWOOD SURVEY CORP., LTD.
GULF MK 111 AIRBORNE MAGNETOMETER PROFILE
 Job No. 3174 Flight No. 19
 Date Flown SEPT. 25/50 Aircraft MAL Line No. 383-N
 Sensitivity Full Scale 1200γ Steps 100γ
 Height Flown 200' Tape Speed 4" PM

2789190

27834

27834

27834

2570

27834