

LOCKWOOD SURVEY CORPORATION LIMITED

CONTRACT # 3174
FLIGHT # 7
DATE FLOWN SEPT. 5-65
AIRCRAFT CF-MLL
FLYING HEIGHT 200'

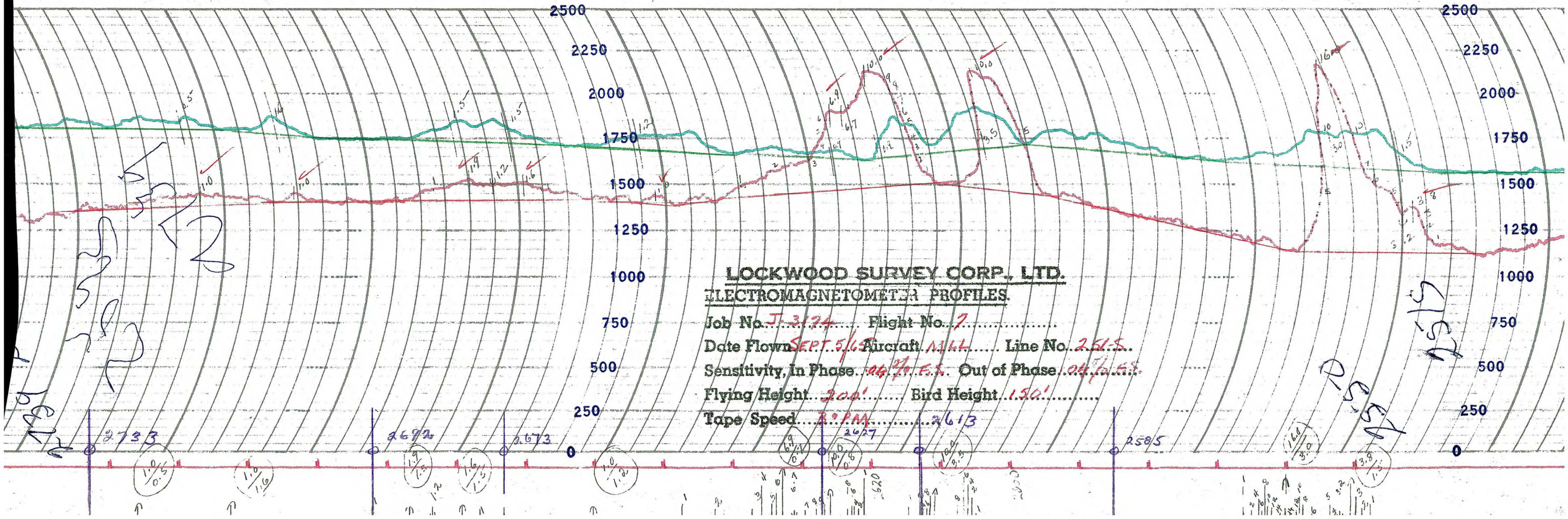
PROFILES
GULF MAGNETOMETER Mk III 4 /MINUTE
SENSITIVITY 1200x
APN-1 RADIO ALTIMETER...../MINUTE
SENSITIVITY.....

LINE No. 251-S
251-N.

017221

LOCKWOOD SURVEY CORP., LTD.
ELECTROMAGNETOMETER PROFILES.

Job No..... Flight No.....
Date Flown..... Aircraft..... Line No.....
Sensitivity, In Phase..... Out of Phase.....
Flying Height..... Bird Height.....
Tape Speed.....



LOCKWOOD SURVEY CORP., LTD.
ELECTROMAGNETOMETER PROFILES.

Job No. J-3174 Flight No. 7
 Date Flown SEPT. 5/65 Aircraft A144 Line No. 2515
 Sensitivity, In Phase 0.4% Out of Phase 0.4%
 Flying Height 200' Bird Height 150'
 Tape Speed 3000 2613

Handwritten notes on the left side of the chart, including a large '2' and some illegible scribbles.

Handwritten notes on the right side of the chart, including '1000' and '1500' with arrows pointing to the profiles.

Scale and annotations at the bottom of the chart. It includes a horizontal axis with vertical tick marks and various handwritten numbers and circled ratios such as 1/0.5, 1/1.6, 1/1.5, 1/1.2, 1/1.1, 1/1.0, 1/0.8, 1/0.6, 1/0.5, 1/0.4, 1/0.3, 1/0.2, 1/0.1, 1/0.05, 1/0.02, 1/0.01, 1/0.005, 1/0.002, 1/0.001, 1/0.0005, 1/0.0002, 1/0.0001, 1/0.00005, 1/0.00002, 1/0.00001, 1/0.000005, 1/0.000002, 1/0.000001.

6217

2733

2720

2692

2673

2627

2613

2585

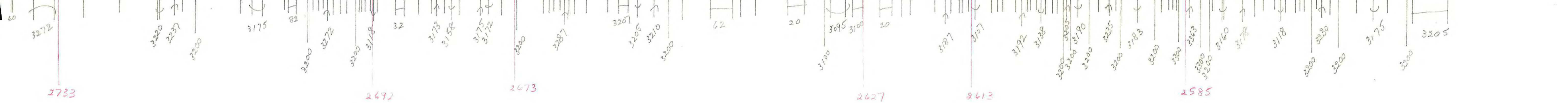
2580

2550

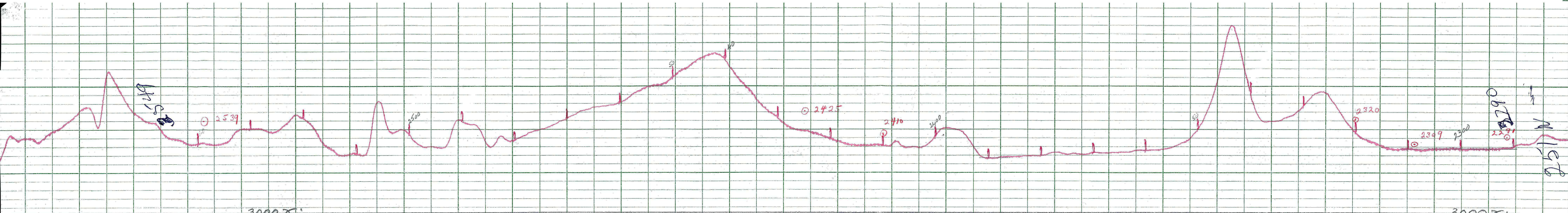
Handwritten notes on the left side of the grid, including '2733', '2720', '2692', '2673', '2627', '2613', '2585', and '2550'.

3000

LOCKWOOD SURVEY CORP., LTD.
 GULF MK 111 AIRBORNE MAGNETIC PROFILE
 Job No. J-3174 Flight No. 7
 Date Flown SEPT 5/55 Aircraft MLL Line No. 251-S
 Sensitivity Full Scale 1200 Steps 1000
 Height Flown 200' Tape Speed 4" P.M.



G-3174
 T-251-S
 SEPT.-5-65
 CF-MLL
 FLIGHT-7



LOCKWOOD SURVEY CORP., LTD.
 GULF MK 111 AIRBORNE MAGNETOMETER PROFILE
 Job No. J-3174 Flight No. 7
 Date Flown SEPT. 5/65 Aircraft 1111 Line No. 2511-N
 Sensitivity Full Scale 1200γ Steps 100γ
 Height Flown 200' Tape Speed 6" P.M.

D
 1
 2
 3
 4
 5
 6
 7
 8
 9
 10

3000
 3000
~~Stop~~
~~Start~~

615

LOCKWOOD SURVEY CORP., LTD.
 GULF MK 111 AIRBORNE MAGNETOMETER PROFILE
 Job No. J-3174 Flight No. 7
 Date Flown SEPT. 5/65 Aircraft 1111 Line No. 2511-N
 Sensitivity Full Scale 1200γ Steps 100γ
 Height Flown 200' Tape Speed 6" P.M.

2290
 2300
 2309
 2400
 2410
 2425
 2500
 2539
 615