

**LOCKWOOD SURVEY CORPORATION LIMITED**

CONTRACT # G-3174  
FLIGHT # No 7  
DATE FLOWN Sept 5/65.  
AIRCRAFT m 44  
FLYING HEIGHT 200 ft

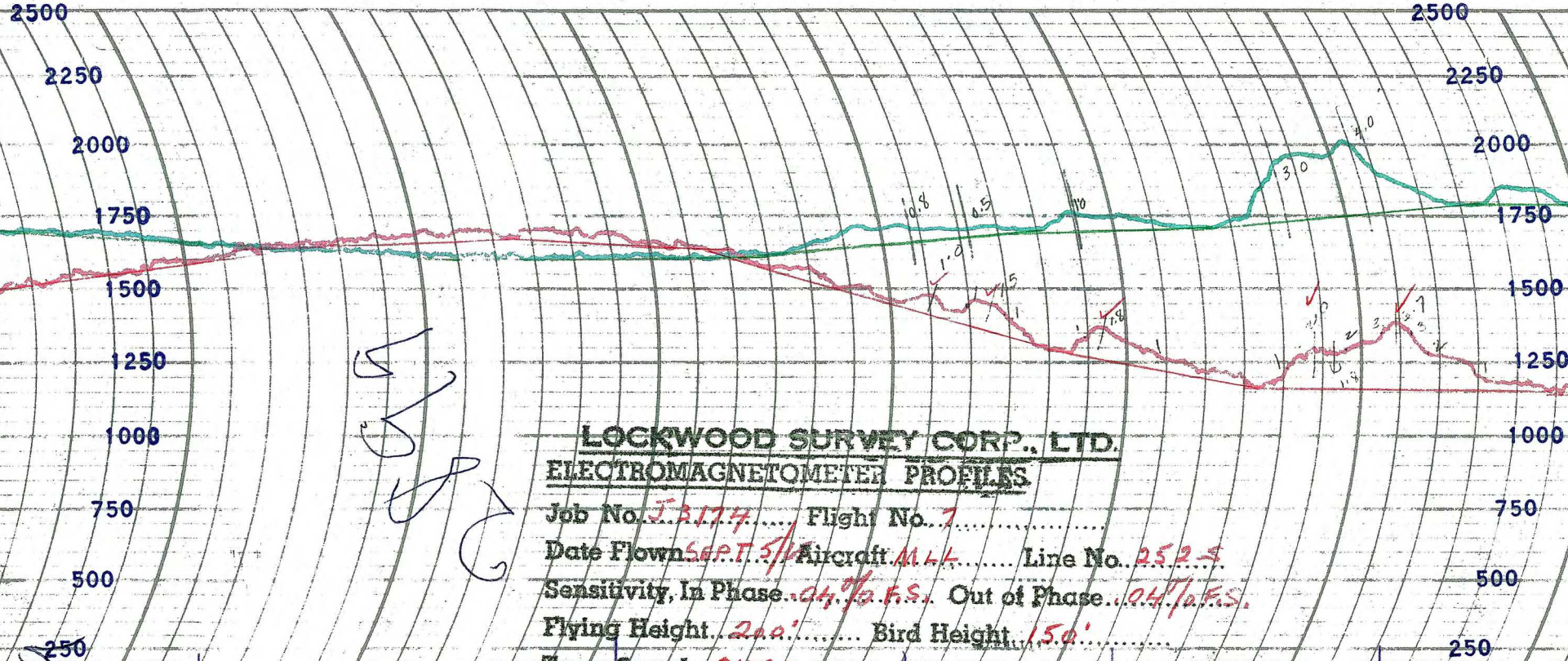
PROFILES  
GULF MAGNETOMETER Mk III 4 /MINUTE  
SENSITIVITY 1200 f  
APN-1 RADIO ALTIMETER /MINUTE  
SENSITIVITY

LINE No. 252.5  
  
017222

**LOCKWOOD SURVEY CORP., LTD.**  
**ELECTROMAGNETOMETER PROFILES.**

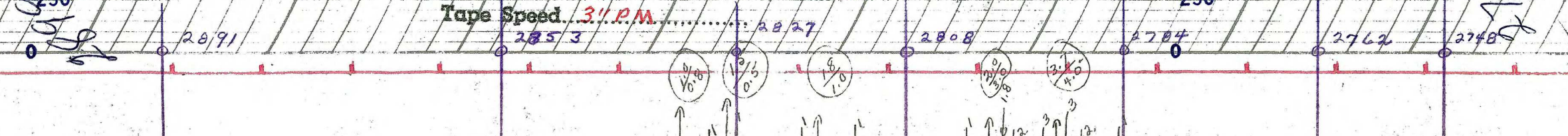
Job No..... Flight No.....  
Date Flown..... Aircraft..... Line No.....  
Sensitivity, In Phase..... Out of Phase.....  
Flying Height..... Bird Height.....  
Tape Speed.....

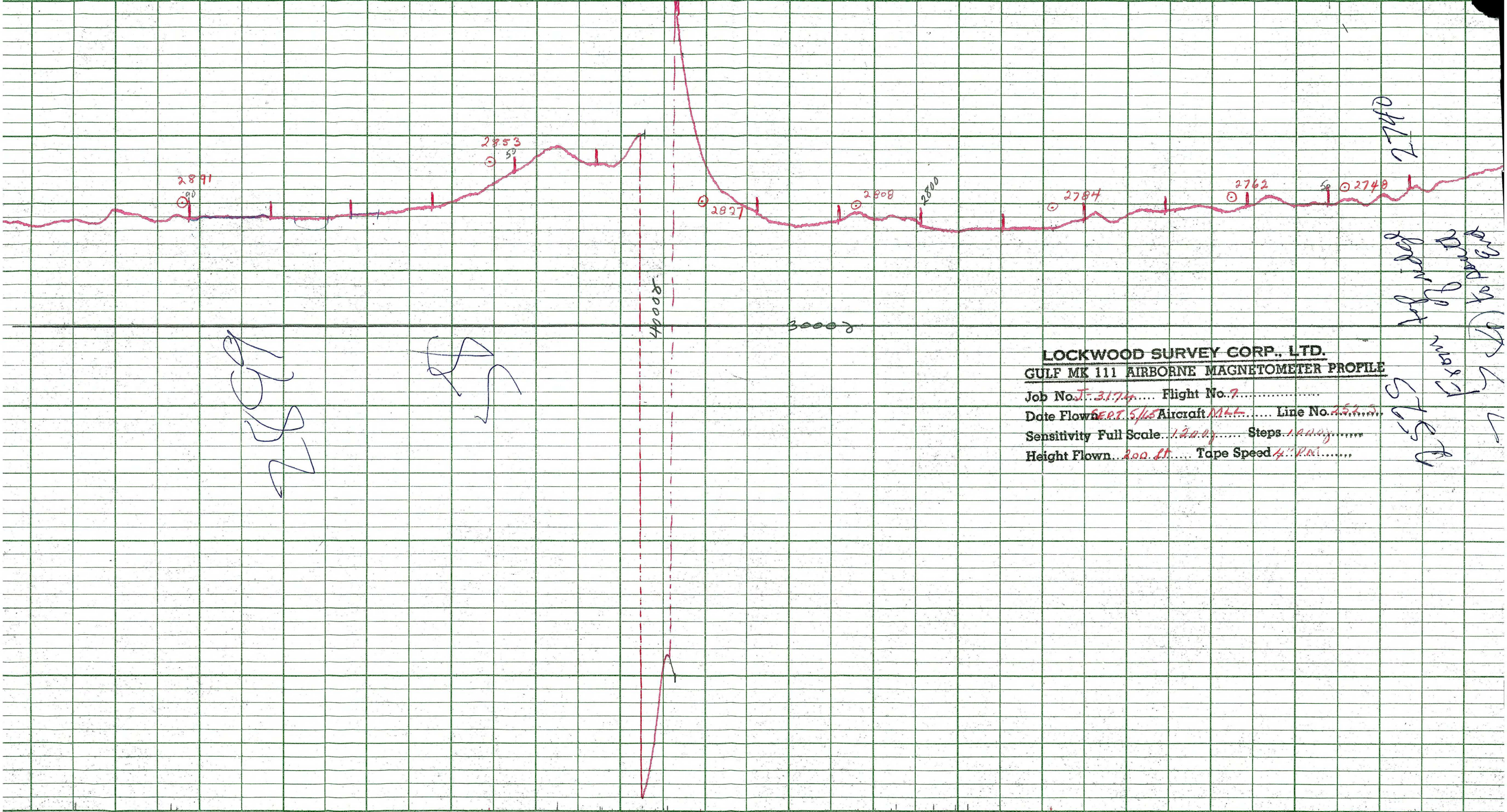




**LOCKWOOD SURVEY CORP., LTD.**  
**ELECTROMAGNETOMETER PROFILES**

Job No. J. 3174 ..... Flight No. 7 .....  
 Date Flown SEPT. 5/54 Aircraft MLK ..... Line No. 2525 .....  
 Sensitivity, In Phase .04% F.S. Out of Phase .04% F.S.  
 Flying Height 200' ..... Bird Height 150' .....  
 Tape Speed 3" P.M. .....





2891

2853

2877

2808

2800

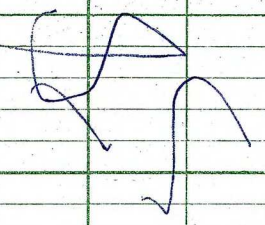
2784

2762

2740

2740

Handwritten scribbles and numbers, possibly '2891'.



4000

3000

**LOCKWOOD SURVEY CORP., LTD.**  
**GULF MK 111 AIRBORNE MAGNETOMETER PROFILE**  
 Job No. J-3174 Flight No. 7  
 Date Flown SEPT. 5/65 Aircraft M44 Line No. 252  
 Sensitivity Full Scale 1200 Steps 1000  
 Height Flown 200 ft. Tape Speed 4 K.M.

Handwritten notes on the right side of the page, including '2740' and 'SUS'.