

LOCKWOOD SURVEY CORPORATION LIMITED

CONTRACT # J-3174
FLIGHT # 8-16
DATE FLOWN SEPT 20 1965
Sept 6/65
AIRCRAFT MLL
FLYING HEIGHT 200'

PROFILES
GULF MAGNETOMETER Mk III 4"/MINUTE
SENSITIVITY 1200 X
APN-1 RADIO ALTIMETER...../MINUTE
SENSITIVITY.....

LINE No. 265-S
265A-N
017238

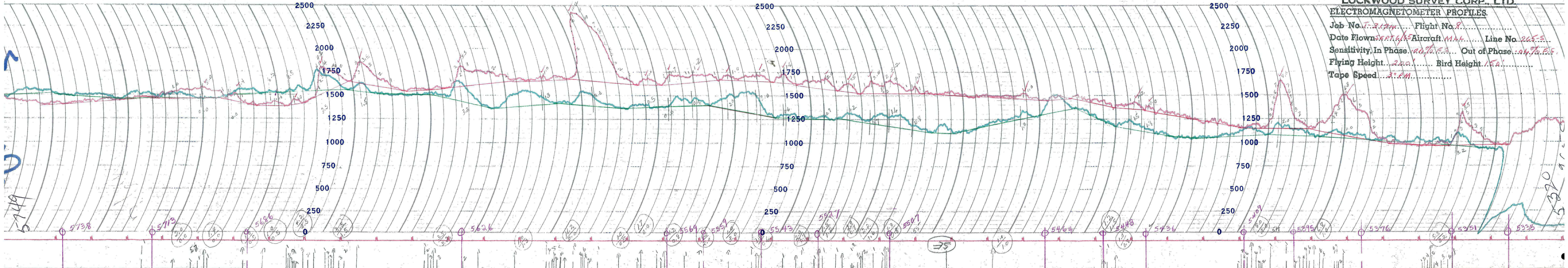
LOCKWOOD SURVEY CORP., LTD.
ELECTROMAGNETOMETER PROFILES.

Job No..... Flight No.....
Date Flown..... Aircraft..... Line No.....
Sensitivity, In Phase..... Out of Phase.....
Flying Height..... Bird Height.....
Tape Speed.....

LOCKWOOD SURVEY CORP., LTD.

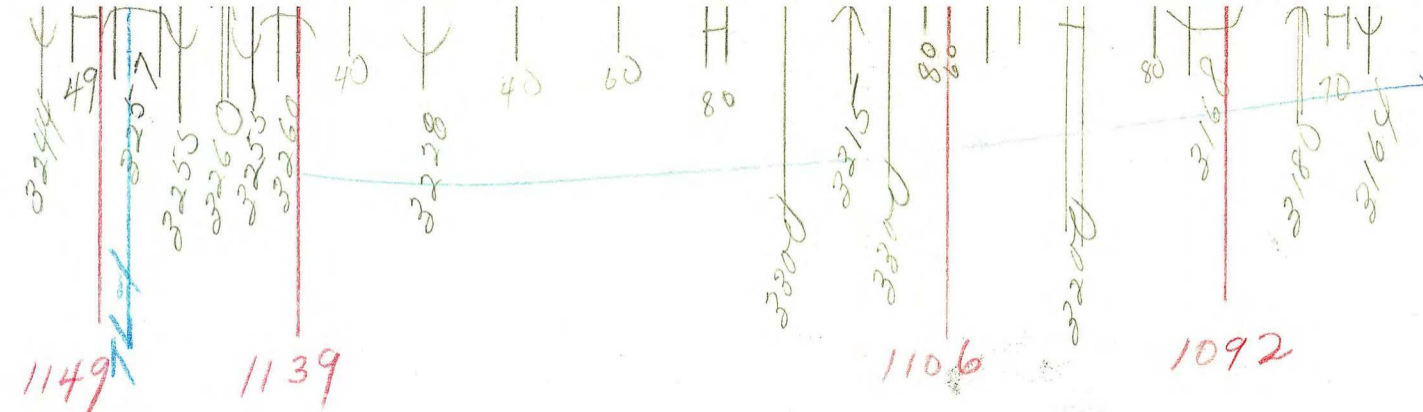
ELECTROMAGNETOMETER PROFILES

Job No. *T-3124* Flight No. *8*
 Date Flown *SEPT 6/45* Aircraft *MAL* Line No. *265-S*
 Sensitivity, In Phase *91% E.S.* Out of Phase *91% E.S.*
 Flying Height *200'* Bird Height *150'*
 Tape Speed *3:PM*



5-479

J. G. S.



G 3174 - MLL
 Sept 22/65
 FT #16

265 A-N

N.T. 7c

CKWOOD SURVEY CORP., LTD.

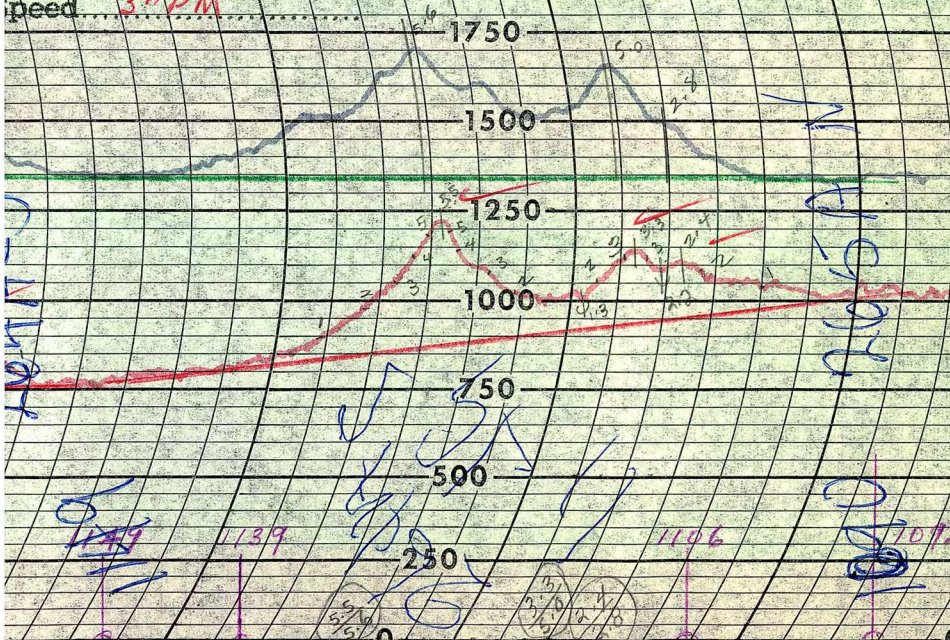
ROMAGNETOMETER PROFILES

BY MAITLAND CHARTS LTD.

MADE IN

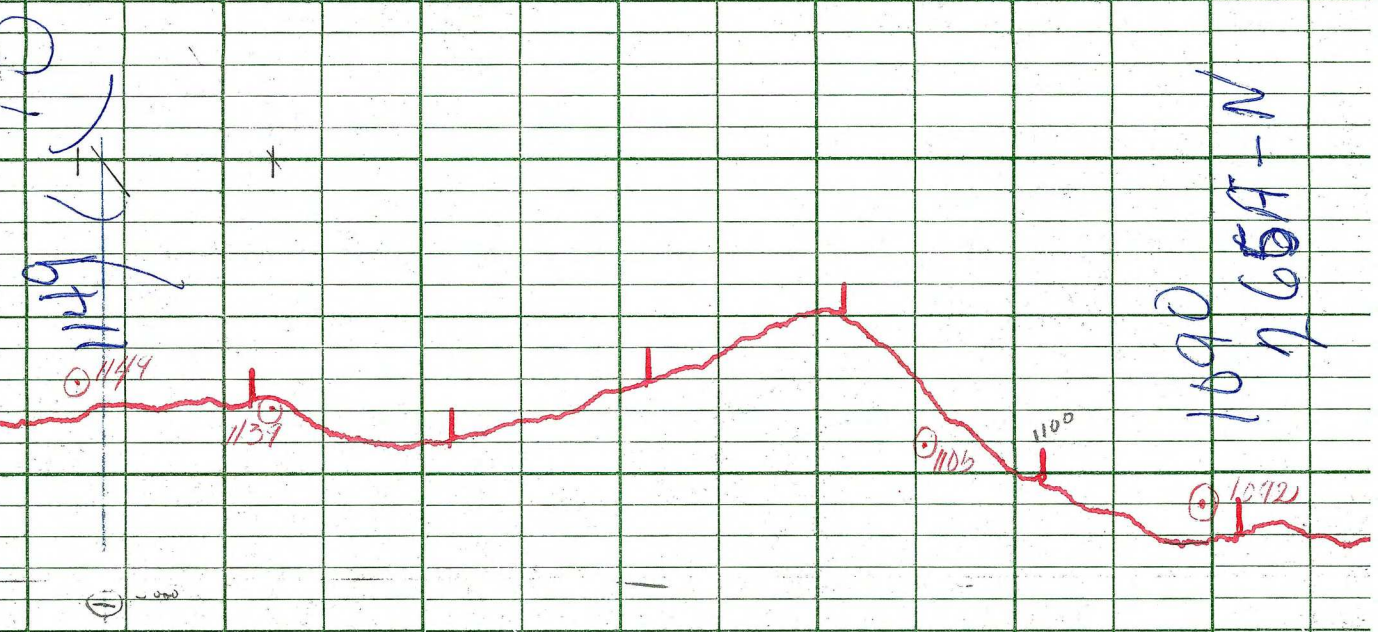
25

J. 3174 Flight No. *16*
Town *SEPT. 22/6* Aircraft *MH-2250* Line No. *26 SA-W*
Activity, In Phase: *.04 % P.S.* Out of Phase: *.04 % P.S.*
Height *200'* Bird Height *150'*
Speed *3:00 PM*



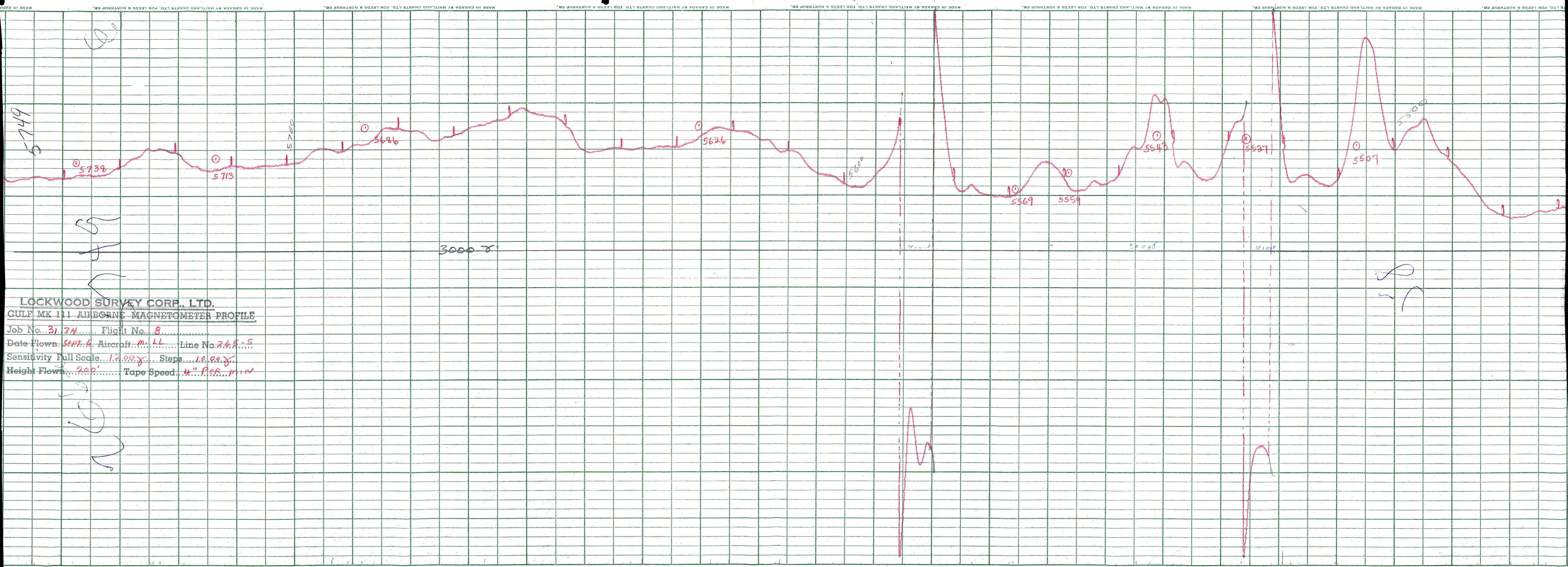
No. 43232





LOCKWOOD SURVEY CORP., LTD.
GULF MK 111 AIRBORNE MAGNETOMETER PROFILE
 Job No. G-3124..... Flight No. 16.....
 Date Flown SEPT. 22/55 Aircraft M-4..... Line No. 2651-N
 Sensitivity Full Scale 120.0 γ..... Steps 10.00 γ.....
 Height Flown 2000'..... Tape Speed 4" PM.....

(Handwritten blue notes)
 3000 γ
 1-3-7
 1090
 1065
 N



5-749

5739
5713

5700

5686

5626

5600

5569

5559

5543

5527

5507

5500

3000

4000

3000

4500

LOCKWOOD SURVEY CORE, LTD.

GULF MK 111 AIRBORNE MAGNETOMETER PROFILE

Job No. 3174 Flight No. 8

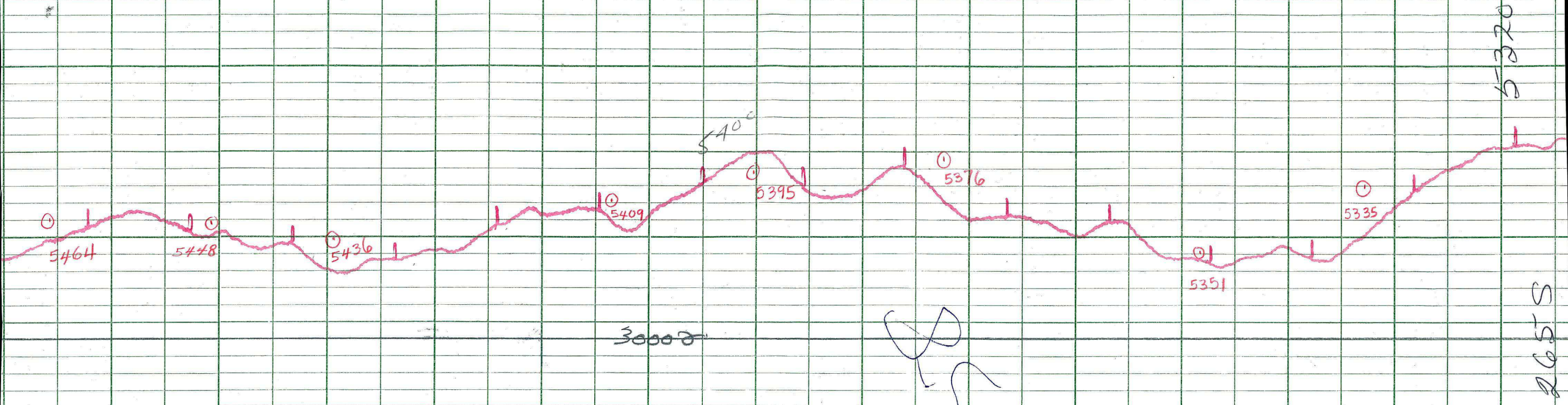
Date Flown SEPT 6 Aircraft M-11 Line No. 245-5

Sensitivity Full Scale 1200 Steps 1000

Height Flown 200' Tape Speed 4" PER MIN

5
 1
 2
 3
 4
 5
 6
 7
 8
 9
 10
 11
 12
 13
 14
 15
 16
 17
 18
 19
 20
 21
 22
 23
 24
 25
 26
 27
 28
 29
 30
 31
 32
 33
 34
 35
 36
 37
 38
 39
 40
 41
 42
 43
 44
 45
 46
 47
 48
 49
 50
 51
 52
 53
 54
 55
 56
 57
 58
 59
 60
 61
 62
 63
 64
 65
 66
 67
 68
 69
 70
 71
 72
 73
 74
 75
 76
 77
 78
 79
 80
 81
 82
 83
 84
 85
 86
 87
 88
 89
 90
 91
 92
 93
 94
 95
 96
 97
 98
 99
 100

2
3



LOCKWOOD SURVEY CORP., LTD.
GULF MK 111 AIRBORNE MAGNETOMETER PROFILE
 Job No. 3174 Flight No. 8
 Date Flown Sept. 6 Aircraft M:44 Line No. 265-S
 Sensitivity Full Scale 1200γ Steps 1000
 Height Flown 200' Tape Speed 4" PER MIN