

LOCKWOOD SURVEY CORPORATION LIMITED

CONTRACT # G-3174
FLIGHT # 16
DATE FLOWN Sept 22/65
AIRCRAFT MLL
FLYING HEIGHT 200'

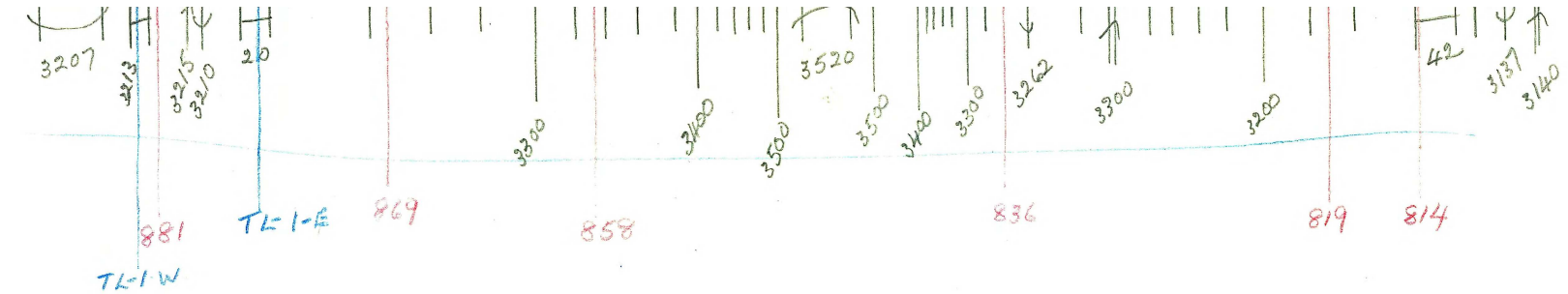
PROFILES
GULF MAGNETOMETER Mk III 4" / MINUTE
SENSITIVITY 1200 X
APN-1 RADIO ALTIMETER _____ / MINUTE
SENSITIVITY _____

LINE No. 269-A-N

017243

LOCKWOOD SURVEY CORP., LTD.
ELECTROMAGNETOMETER PROFILES.

Job No..... Flight No.....
Date Flown..... Aircraft..... Line No.....
Sensitivity, In Phase..... Out of Phase.....
Flying Height..... Bird Height.....
Tape Speed.....



G-3174
 T-269-A-N
 SEPT-22-65
 MLL
 FLIGHT-16

N.T. A.B.

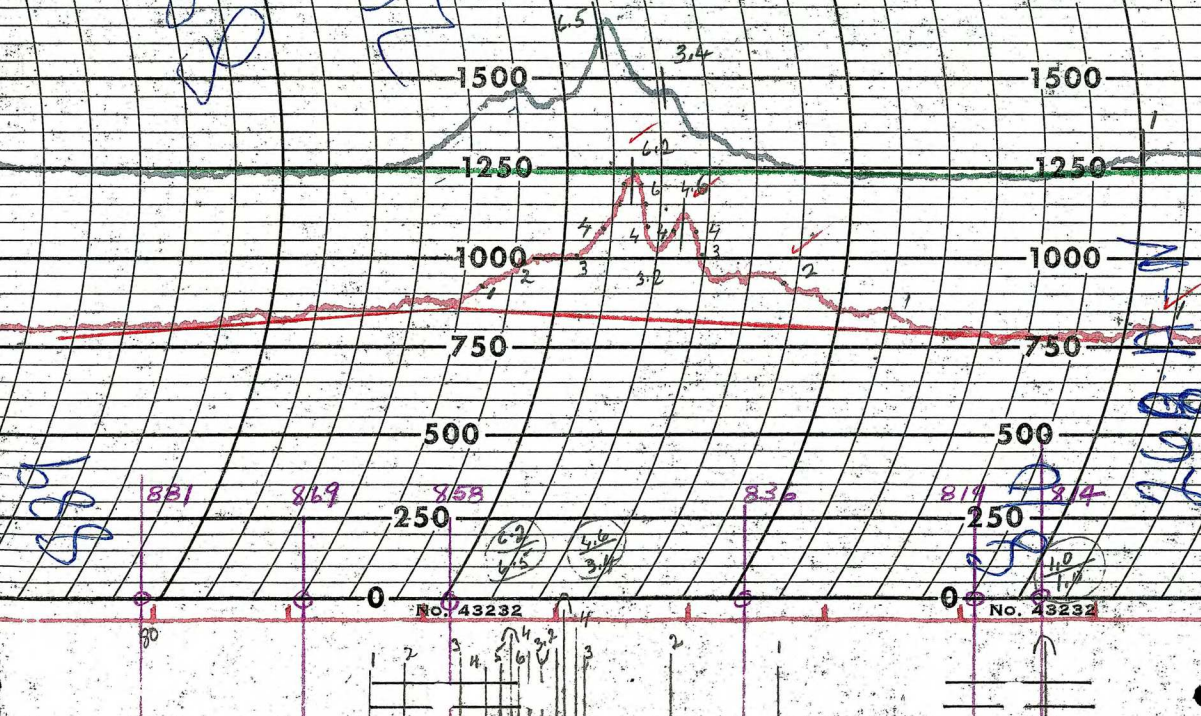
LOCKWOOD SURVEY CORP., LTD.

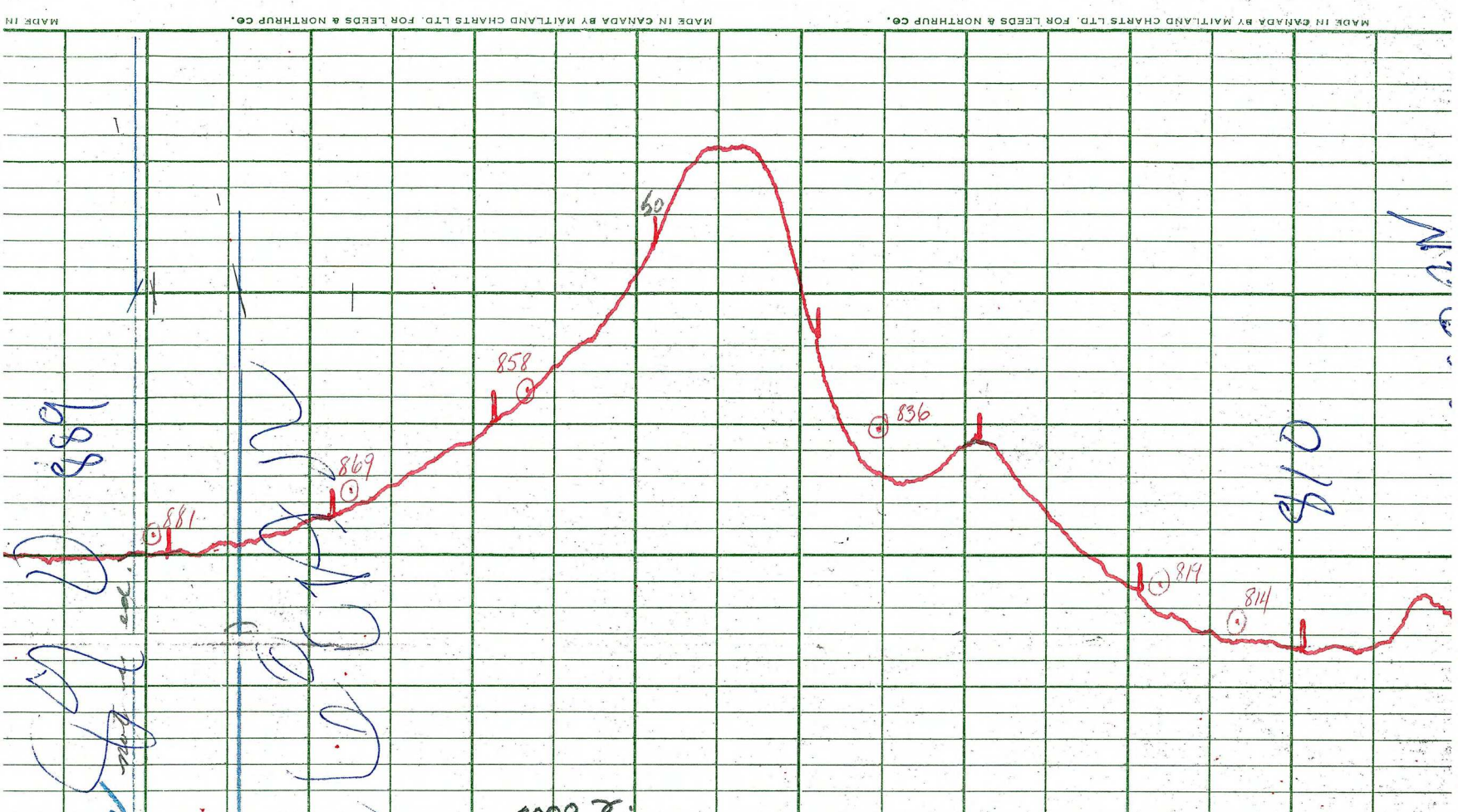
ELECTROMAGNETIC METER PROFILES

2500

MADE IN CANADA BY MAITLAND CHARLES LTD.

Job No. *J-3174* Flight No. *10*
Date Flown *SEPT 22/53* 2250 Aircraft *MAL* Line No. *694-N* 2250
Sensitivity, In Phase *0.10 F.S.* Out of Phase *0.50 F.S.* 2000
Flying Height *2000'* Bird Height *150'*
Tape Speed *3" P.M.* 1750 1750





LOCKWOOD SURVEY CORP., LTD.
GULF MK 111 AIRBORNE MAGNETOMETER PROFILE

Job No. J-3174..... Flight No. 16.....
 Date Flown SEPT. 22/65 Aircraft M44..... Line No. 269A-N
 Sensitivity Full Scale 1.200 γ..... Steps 100 γ.....
 Height Flown 3000..... Tape Speed 4" P.M......