

LOCKWOOD SURVEY CORPORATION LIMITED

CONTRACT # G 3174
FLIGHT # E-10
DATE FLOWN Sept 6-65
Sept 8-65
AIRCRAFT M.H.
FLYING HEIGHT 200'

PROFILES
GULF MAGNETOMETER Mk III 4 /MINUTE
SENSITIVITY 1200
APN-1 RADIO ALTIMETER _____ /MINUTE
SENSITIVITY _____

LINE No. 277 S

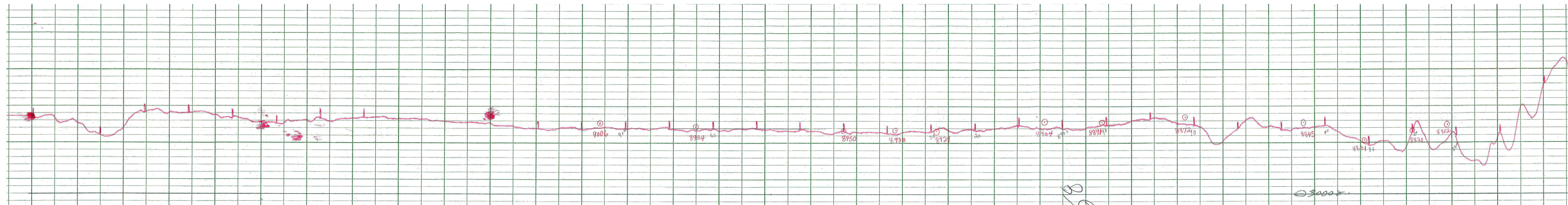
017254

LOCKWOOD SURVEY CORP., LTD.
ELECTROMAGNETOMETER PROFILES

Job No. Flight No.
Date Flown Aircraft Line No.
Sensitivity, In Phase Out of Phase
Flying Height Bird Height
Tape Speed



G 3174
 Sept 6-65
 T 2115
 Y. T. E.



LOCKWOOD SURVEY CORP., LTD.
 GULF MK 111 AIRBORNE MAGNETOMETER PROFILE
 Job No. 31.74 Flight No. 8
 Date Flown Sept. 6 Aircraft M-11 Line No. 277.5
 Sensitivity Full Scale 1200γ Steps 1000γ
 Height Flown 200' Tape Speed 4" PER MIN

411/14
 22
 42
 46/65
 3174

LOCKWOOD SURVEY CORP., LTD.
 GULF MK 111 AIRBORNE MAGNETOMETER PROFILE
 Job No. 31.74 Flight No. 8
 Date Flown Sept. 6 Aircraft M-11 Line No. 277.5
 Sensitivity Full Scale 1200γ Steps 1000γ
 Height Flown 200' Tape Speed 4" PER MIN

MADE IN U.S.A.

ESTERLINE ANGUS

INDIANAPOLIS, IND., U.S.A.

F.S.

2500

2250

2000

1750

1500

1250

1000

750

500

250

2500

2250

2000

1750

1500

1250

1000

750

500

250

LOCKWOOD SURVEY CORP., LTD.
ELECTROMAGNET METER PROFILES

Job No. J-5174 Flight No. 8

Date Flown 6/16/65 Aircraft M14 Line No. 277-5

Sensitivity, In Phase: 44.9 f.o.s. Out of Phase: 81.7 f.o.s.

Flying Height: 200' Bird Height: 150'

Tape Speed: 2.4 M.

9006

8984

8950

8928

8929

8904

8891

8872

8845

8831

8820

8812

8800

8780

8760

8740

8720

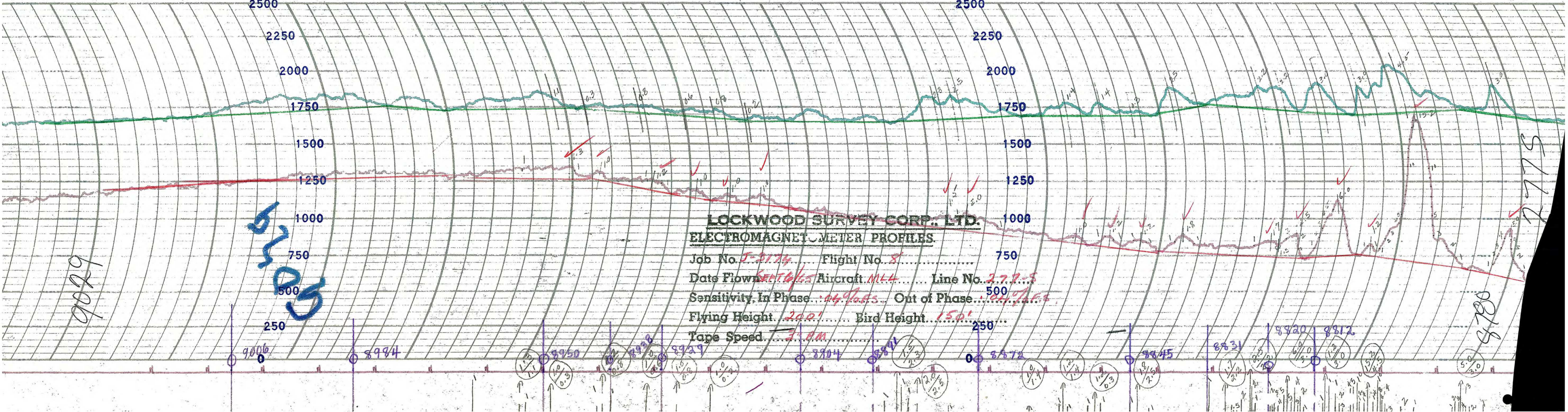
8700

9029

5000
5000
5000

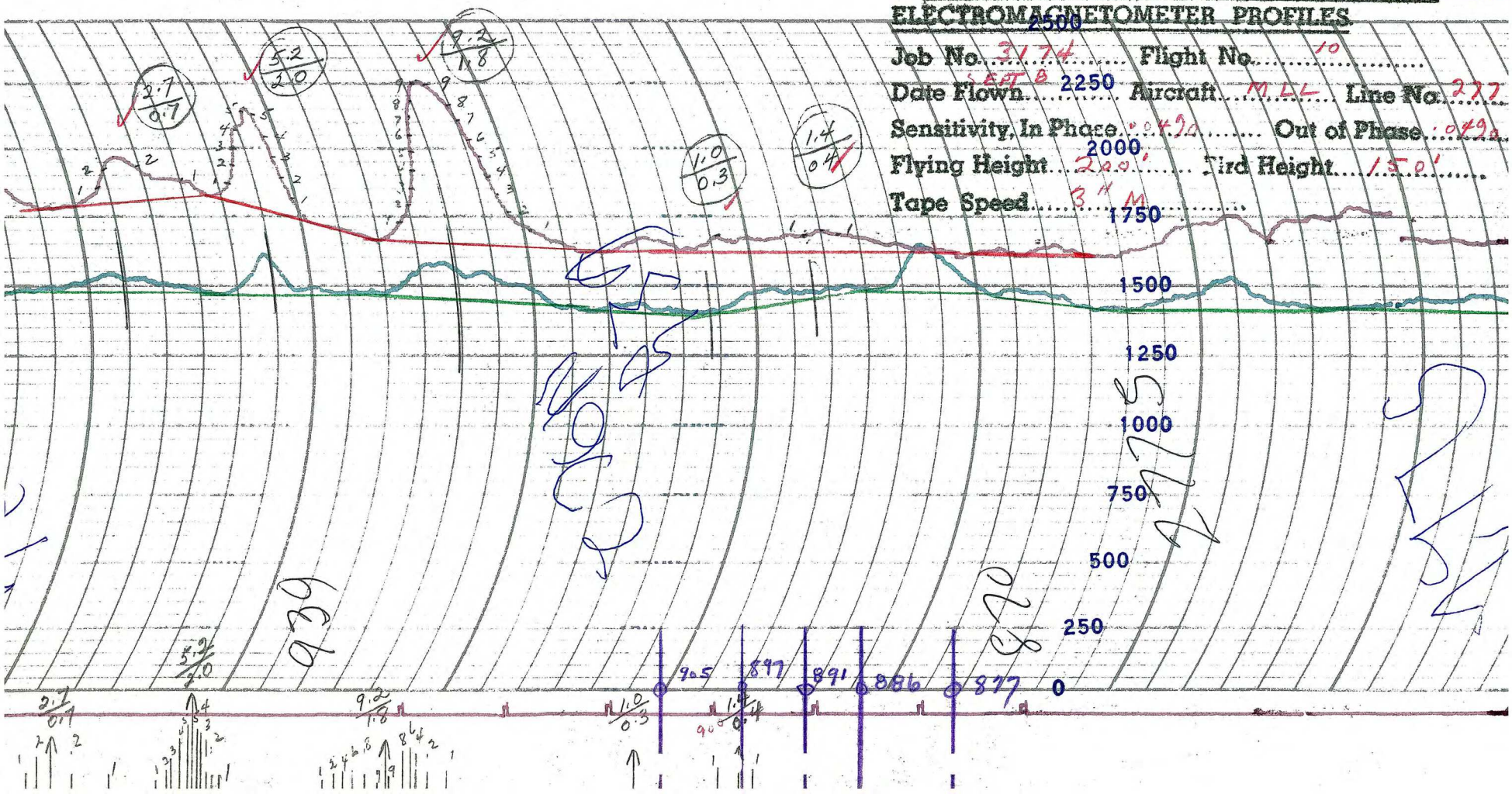
5000
5000

5000
5000

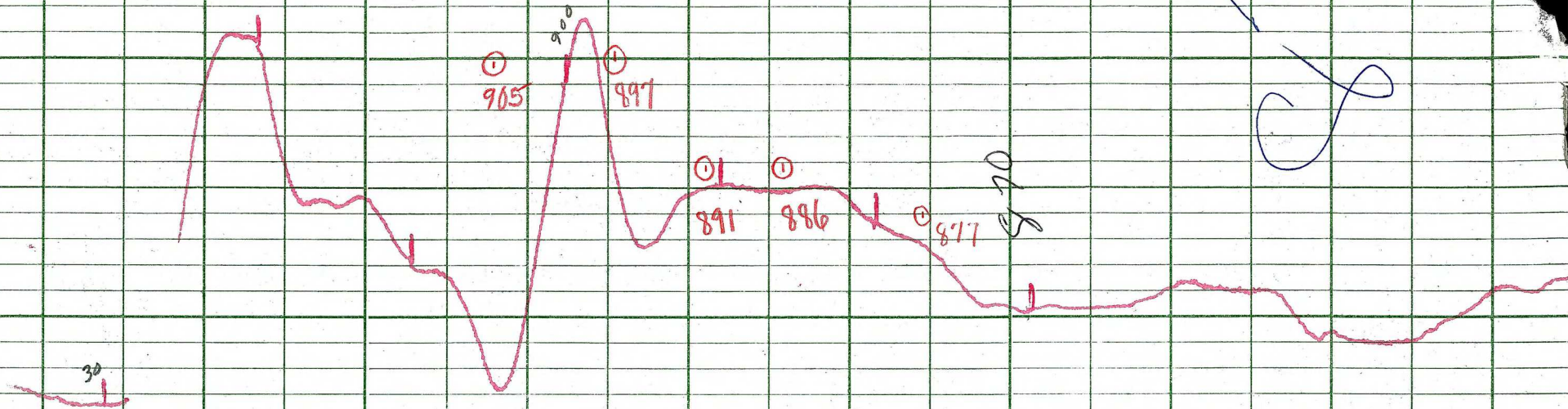


LOCKWOOD SURVEY CORP. ESTERLINE
ELECTROMAGNETOMETER PROFILES

Job No. 3174 Flight No. 10
 Date Flown SEPT 8 2250 Aircraft M.L.L. Line No. 277
 Sensitivity, In Phase 0.0490 Out of Phase 0.0490
 Flying Height 2000' Tird Height 150'
 Tape Speed 3" M 1750



939



Handwritten signature or initials in blue ink.

Large handwritten signature or initials in blue ink, oriented vertically.

LOCKWOOD SURVEY CORP., LTD.
GULF MK 111 AIRBORNE MAGNETOMETER PROFILE

Job No. J-3174 Flight No. 10
 Date Flown SEPT. 8/65 Aircraft A144 Line No. 277.5
 Sensitivity Full Scale 1.200γ Steps 1000γ
 Height Flown 1000' Tape Speed 4" P.M.

Handwritten numbers: 775, 3000, and a circled 0.