

LOCKWOOD SURVEY CORPORATION LIMITED

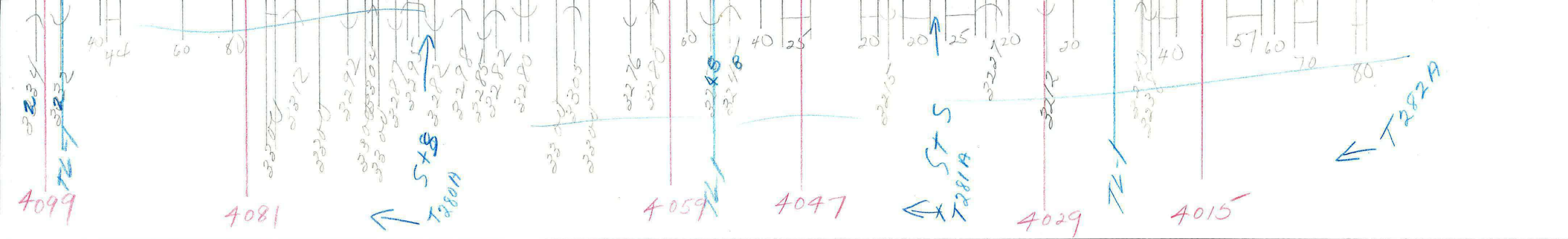
CONTRACT # C-3174
FLIGHT # 9410
DATE FLOWN Sept 9/65
AIRCRAFT MLL
FLYING HEIGHT 200

PROFILES
GULF MAGNETOMETER Mk III 4 /MINUTE
SENSITIVITY 1200
APN-1 RADIO ALTIMETER _____ /MINUTE
SENSITIVITY _____

280-S
LINE No. 280-N
280 A-N } on
281-A-S } part
282-A-N } part
017257

LOCKWOOD SURVEY CORP., LTD.
ELECTROMAGNETOMETER PROFILES.

Job No..... Flight No.....
Date Flown..... Aircraft..... Line No.....
Sensitivity, In Phase..... Out of Phase.....
Flying Height..... Bird Height.....
Tape Speed.....



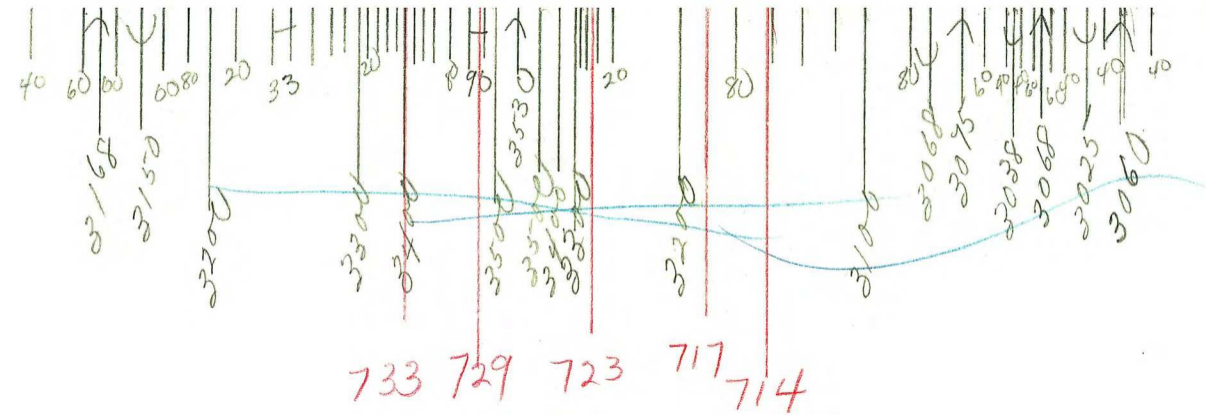
G 317# MLL
 Sept 1/65
 FLT #15
 280 AN
 281 - A-5
 282 - A-N
 N.T. JC

G 3174 - MLL

Sept 8/65 FLT # 10

280-5

00
11



G 3174 FLT # 10

Sept 8/65 MLL

280-5

00
11

MADE IN U.S.A.

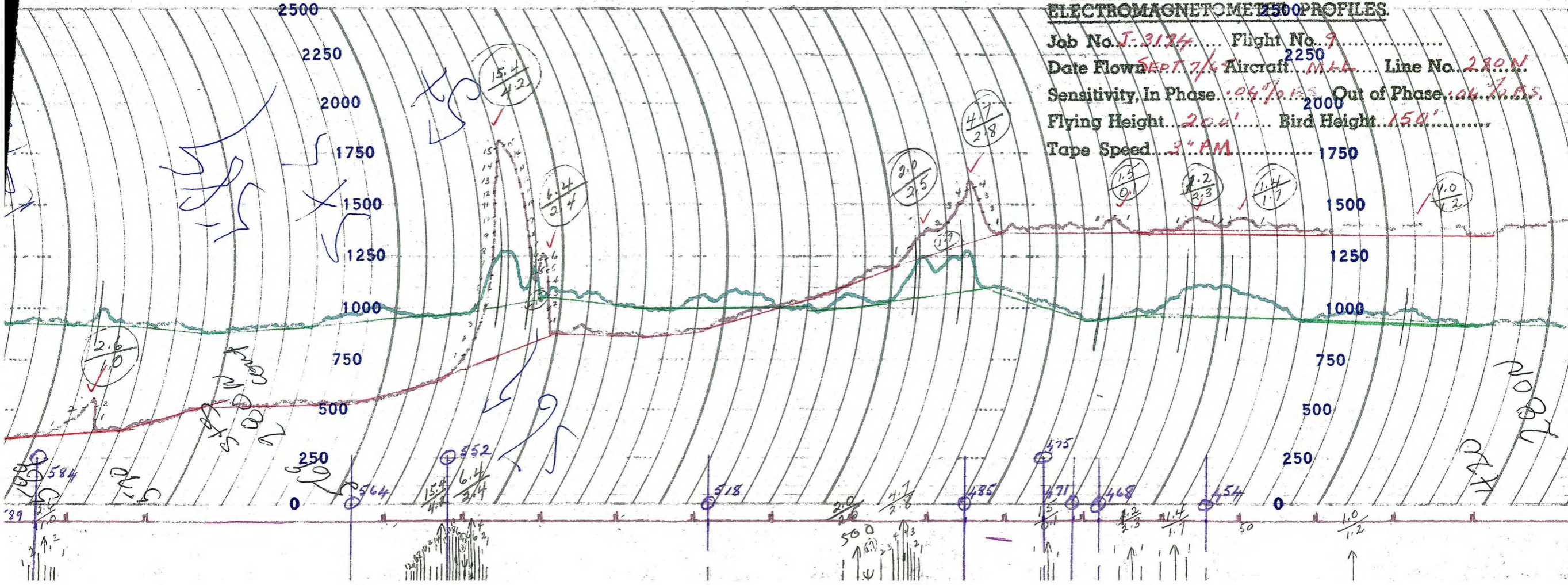
ESTERLINE ANGUS

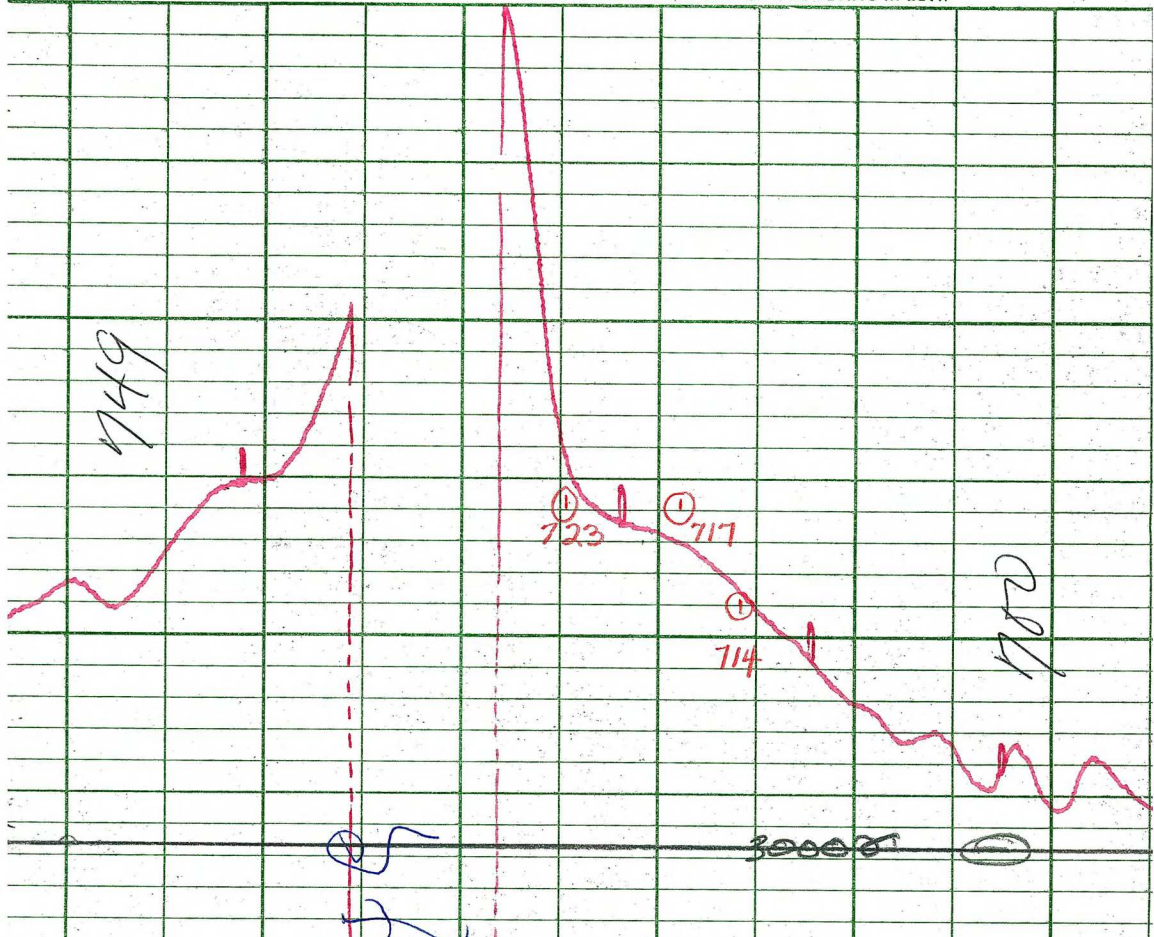
INDIANAPOLIS, IND., U. LOCKWOOD SURVEY CORP., LTD.

le

ELECTROMAGNETOMETRIC PROFILES

Job No. J-3124 Flight No. 7
 Date Flown SEPT 7/6 Aircraft M.A. Line No. 280N
 Sensitivity, In Phase 0.4% Out of Phase 0.4%
 Flying Height 200' Bird Height 150'
 Tape Speed 3" PM





LOCKWOOD SURVEY CORP., LTD.

GULF MK 111 AIRBORNE MAGNETOMETER PROFILE

Job No. J-3174 Flight No. 10

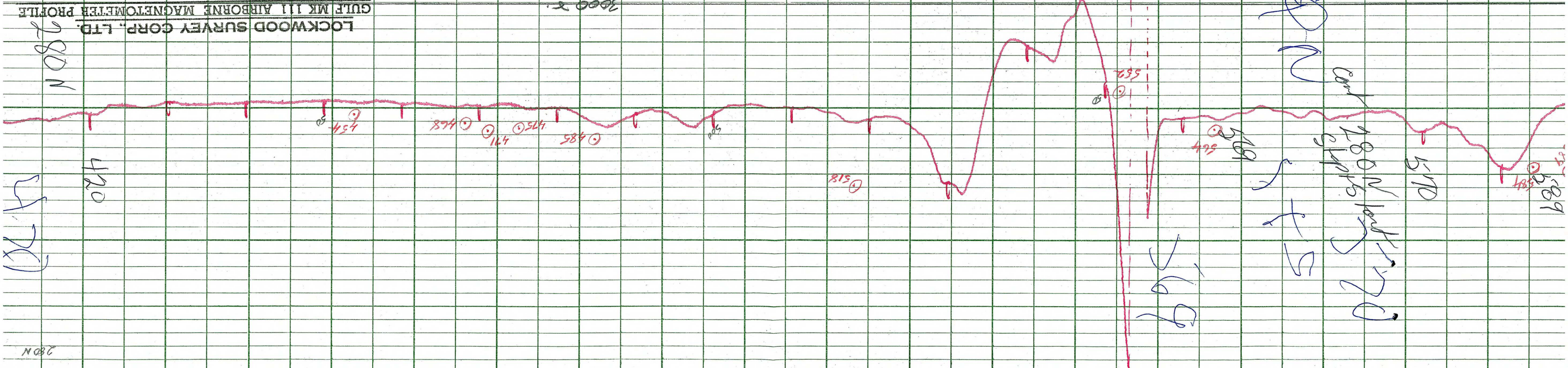
Date Flown SEPT. 8/65 Aircraft M4L Line No. 280-5

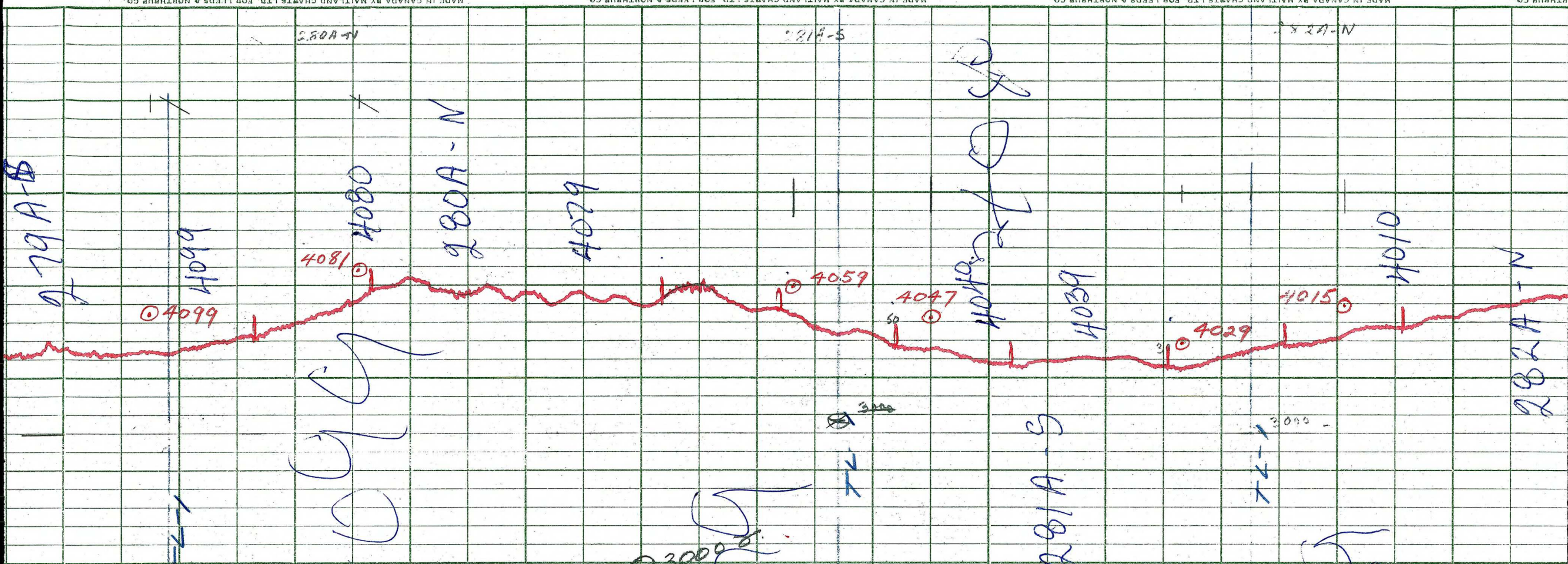
Sensitivity Full Scale 1200γ Steps 1000γ

Height Flown 1000' Tape Speed 4" P.M.

① 733 ① 729

LOCKWOOD SURVEY CORP., LTD.
GULF MK III AIRBORNE MAGNETOMETER PROFILE
Job No. *J-3174* Flight No. *9*
Date Flown *SEPT 2/5* Aircraft *M.L.L.* Line No. *280N*
Sensitivity Full Scale *1200* Steps *1000*
Height Flown *10000* Tape Speed *4.0 FM*





LOCKWOOD SURVEY CORP. LTD.
GULF MK 111 AIRBORNE MAGNETOMETER PROFILE
 Job No. 3174 Flight No. 15
 Date Flown 17 SEPT '65 Aircraft MLL Line No. 282-N
 Sensitivity Full Scale 1200γ Steps 1000γ
 Height Flown 7000ft Tape Speed 4"PM

"A" LINES
281-S, 280-N, 279-S
~~282-N, 279-S, 278-W~~

NOTE B lines
 282A.
 281A
 280A.