

LOCKWOOD SURVEY CORPORATION LIMITED

CONTRACT # 3174
FLIGHT # 9-10
DATE FLOWN Sept 7-65
Sept 8-65
AIRCRAFT MLL
FLYING HEIGHT 200'

PROFILES
GULF MAGNETOMETER Mk III 4 /MINUTE
SENSITIVITY 1200
APN-1 RADIO ALTIMETER /MINUTE
SENSITIVITY

LINE No. 282 N
282 S

017259

LOCKWOOD SURVEY CORP., LTD.
ELECTROMAGNETOMETER PROFILES.

Job No..... Flight No.....
Date Flown..... Aircraft..... Line No.....
Sensitivity, In Phase..... Out of Phase.....
Flying Height..... Bird Height.....
Tape Speed.....

MADE IN U.S.A.

ESTERLINE ANGUS

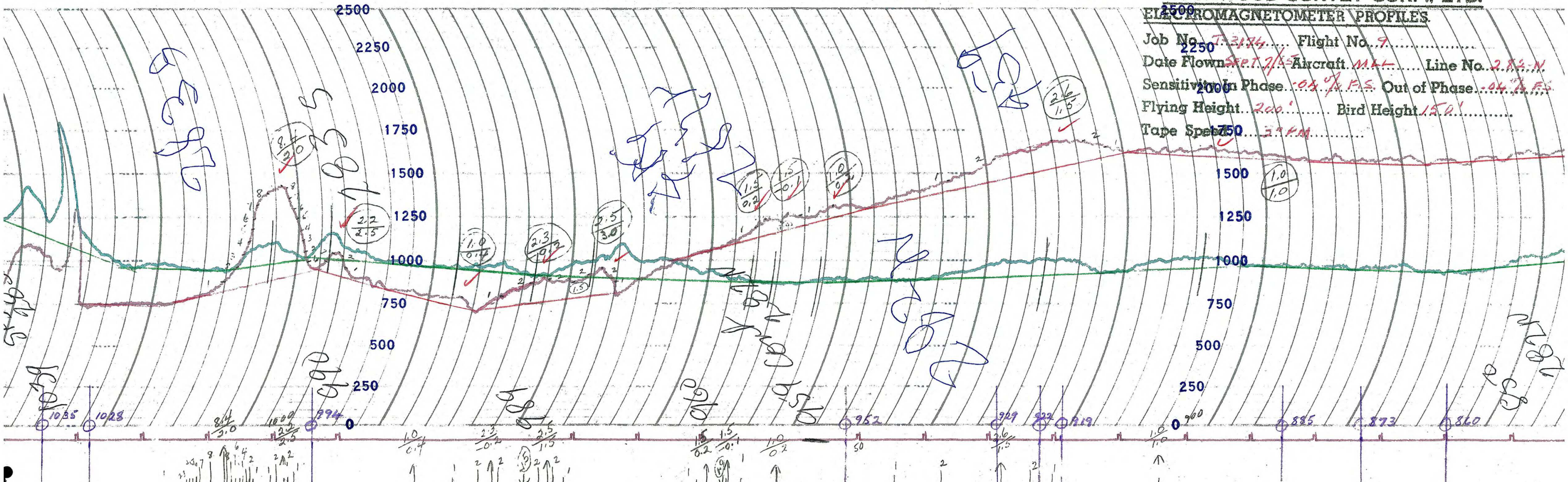
INDIANAPOLIS, IND., U.S.A.

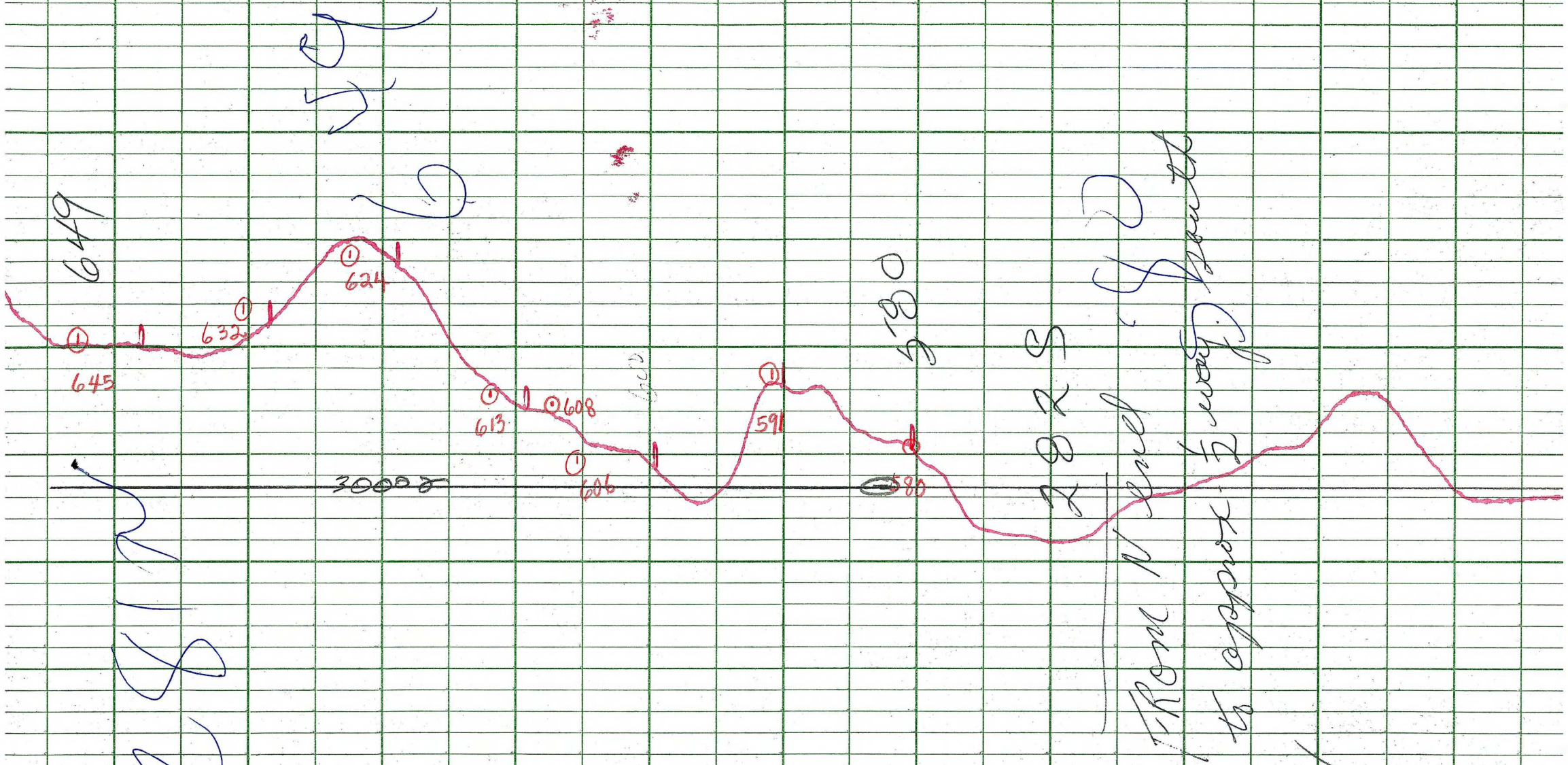
E.S.

LOCKWOOD SURVEY CORP., LTD.

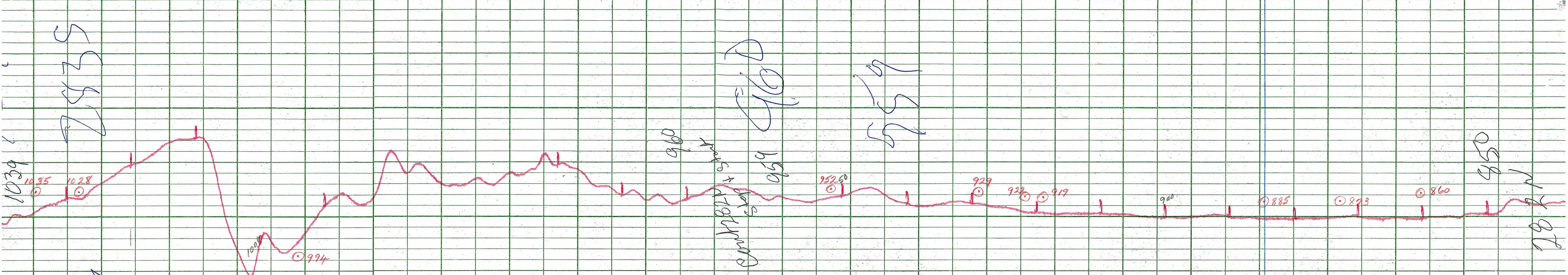
ELECTROMAGNETOMETER PROFILES

Job No. T-3184 Flight No. 9
 Date Flown SEPT. 7/45 Aircraft M-L Line No. 284-N
 Sensitivity In Phase .04 % F.S. Out of Phase .04 % F.S.
 Flying Height 200' Bird Height 150'
 Tape Speed 1750





LOCKWOOD SURVEY CORP., LTD.
GULF MK 111 AIRBORNE MAGNETOMETER PROFILE
 Job No. J-3174..... Flight No. 10.....
 Date Flown SEPT 8/65 Aircraft M.L.L...... Line No. 282-S.....
 Sensitivity Full Scale 1200γ..... Steps 1000γ.....
 Height Flown 1000'..... Tape Speed 4" PM.....



Handwritten blue notes:
 2935
 1039
 960
 959
 952.50
 929
 922
 919
 858

3000

LOCKWOOD SURVEY CORP., LTD.
 GULF MK 111 AIRBORNE MAGNETOMETER
 Job No. J-3174 Flight No. 9
 Date Flown SEP 7/65 Aircraft 11164 Line No. 2827
 Sensitivity Full Scale 12000 Steps 1000
 Height Flown 2000ft Tape Speed 4" PM

2-71