

**LOCKWOOD SURVEY CORPORATION LIMITED**

CONTRACT # 3174  
FLIGHT # 9  
DATE FLOWN Sept 7-65  
AIRCRAFT M.L.L.  
FLYING HEIGHT 200'

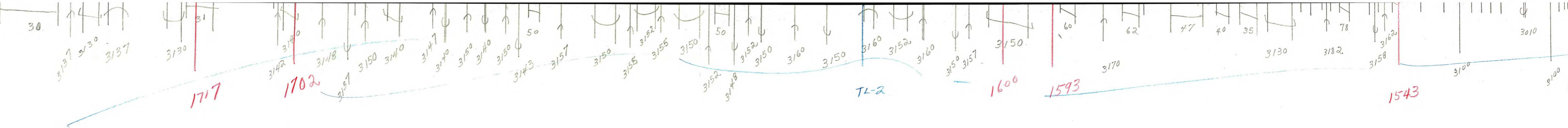
PROFILES  
GULF MAGNETOMETER Mk III 4 /MINUTE  
SENSITIVITY 1200  
APN-1 RADIO ALTIMETER          /MINUTE  
SENSITIVITY         

285-N.  
LINE No. 285-S

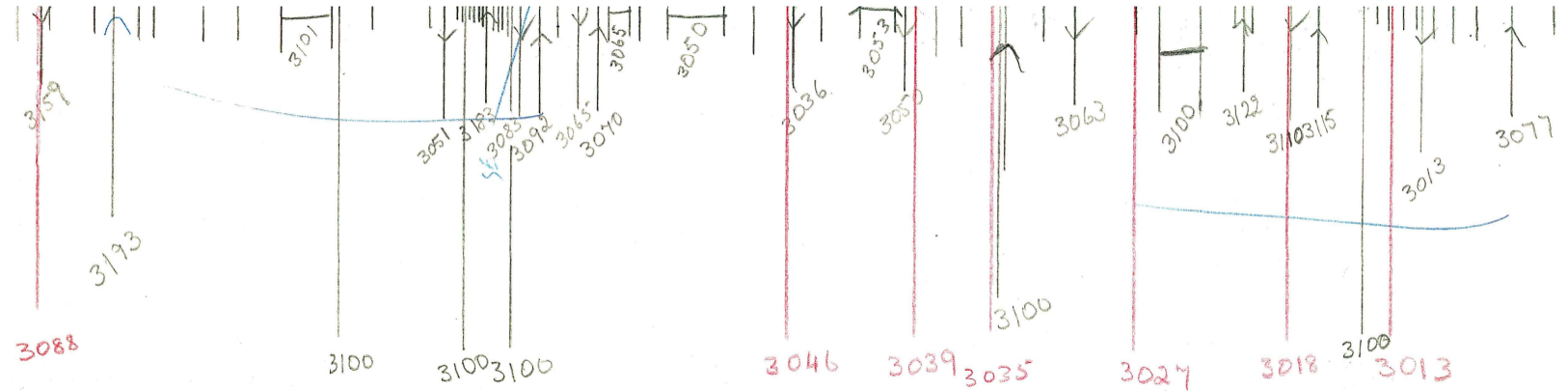
017263

**LOCKWOOD SURVEY CORP., LTD.**  
**ELECTROMAGNETOMETER PROFILES**

Job No.           
Date Flown          Aircraft          Line No.           
Sensitivity, In Phase          Out of Phase           
Flying Height          Bird Height           
Tape Speed



Job - G-3174  
Flt - 9  
Date - Sept 7/65  
LN. - 285-N

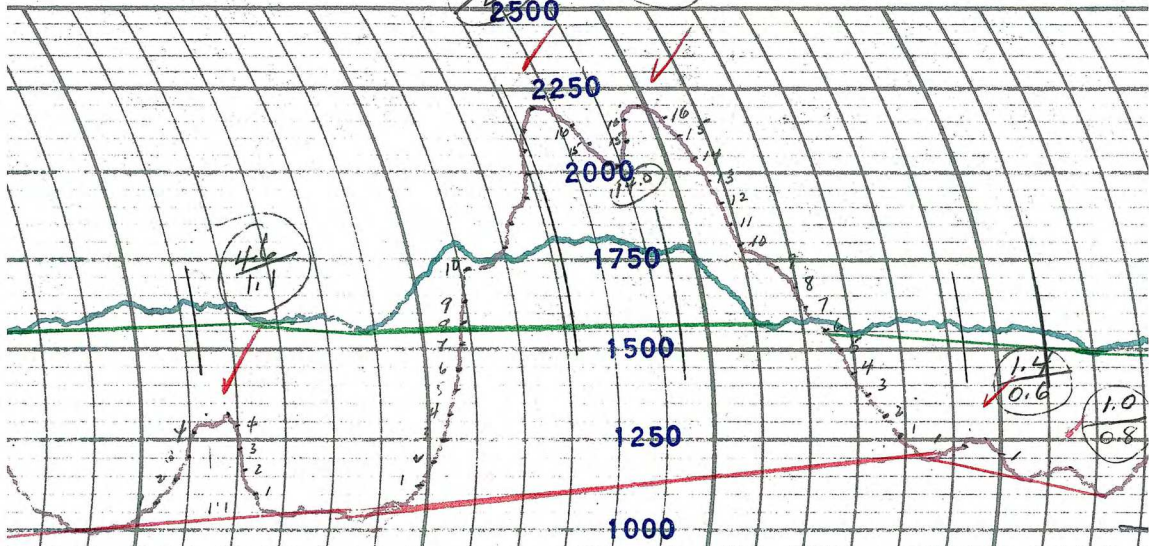


Job - G-3174  
Flt - 9  
Date - Sept 7/65  
LN. - 285-N

AT.

9c

ESTERLINE A

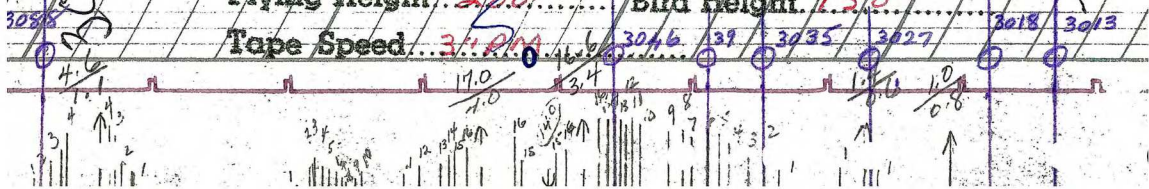


**LOCKWOOD SURVEY CORP., LTD.**  
**ELECTROMAGNETOMETRIC PROFILES.**

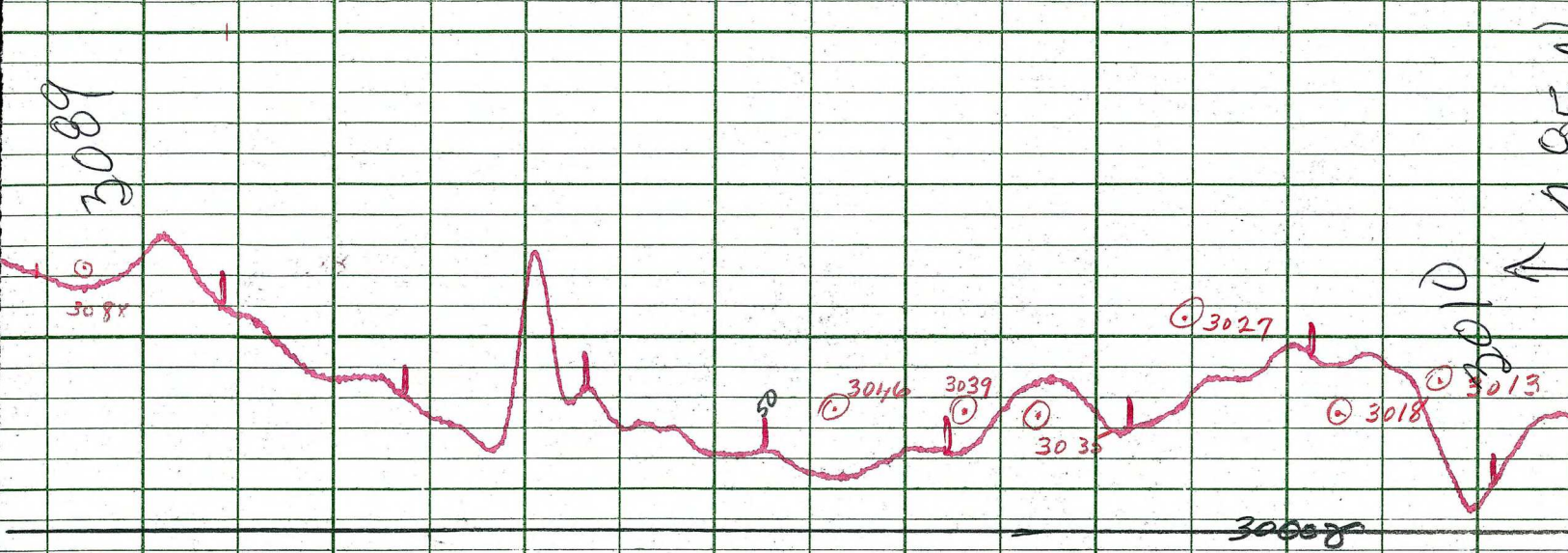
Job No. J-3174 ..... Flight No. 9 .....  
 Date Flown Sept 7, 1955 ..... Aircraft M-4L ..... Line No. 285-N .....  
 Sensitivity, in Phase 5.47% F.S. ..... Out of Phase 10.47% F.S. .....  
 Flying Height 200' ..... Bird Height 150' .....  
 Tape Speed 3.4 RPM .....  
 3038 4.6 17.0 3.4 3046 39 3035 3027 3018 3013

Handwritten notes and diagrams on the left margin, including a vertical scale and arrows pointing to the profile.

Handwritten notes and diagrams on the right margin, including a vertical scale and arrows pointing to the profile.







**LOCKWOOD SURVEY CORP., LTD.**

**GULF MK 111 AIRBORNE MAGNETOMETER PROFILE**

Job No. 53014... Flight No. 9.....  
 Date Flown SEPT 7/55 Aircraft M11... Line No. 285-N.....  
 Sensitivity Full Scale 1200 γ..... Steps 1000 γ.....  
 Height Flown 1000'..... Tape Speed 4" PM.....

*Handwritten blue scribbles and lines on the left side of the page.*

*Handwritten blue scribbles and lines at the bottom left of the page.*

T-285-N

