

LOCKWOOD SURVEY CORPORATION LIMITED

CONTRACT # G-3174
FLIGHT # 94
DATE FLOWN SEPT. 7/65
AIRCRAFT M. L. L.
FLYING HEIGHT 2001

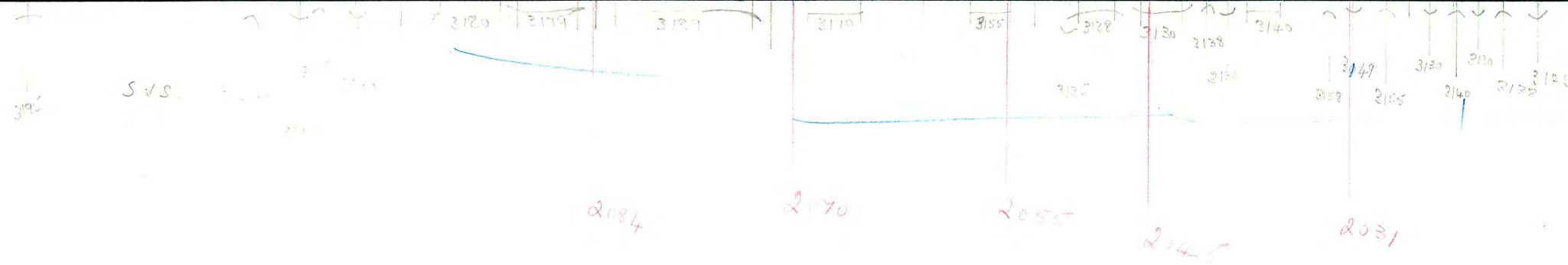
PROFILES
GULF MAGNETOMETER Mk III 4"/MINUTE
SENSITIVITY 1200 γ
APN-1 RADIO ALTIMETER...../MINUTE
SENSITIVITY.....

LINE No. 287-14
287-5
SEPT 17/65 287 A-N FLT 11

017267

LOCKWOOD SURVEY CORP., LTD.
ELECTROMAGNETOMETER PROFILES.

Job No..... Flight No.....
Date Flown..... Aircraft..... Line No.....
Sensitivity, In Phase..... Out of Phase.....
Flying Height..... Bird Height.....
Tape Speed.....



G-3174
 F. 9
 SEPT 7/65
 L 287.5

G-3174

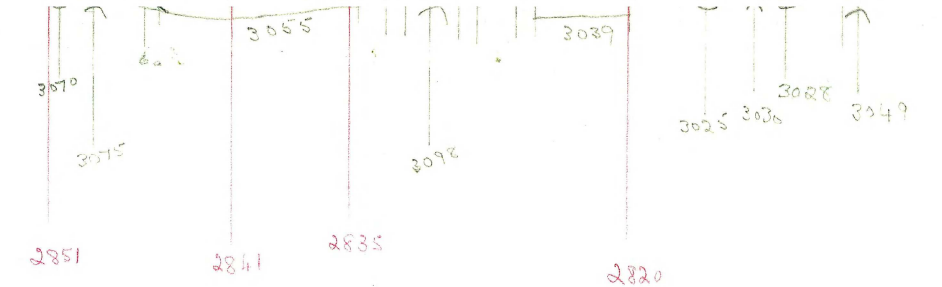
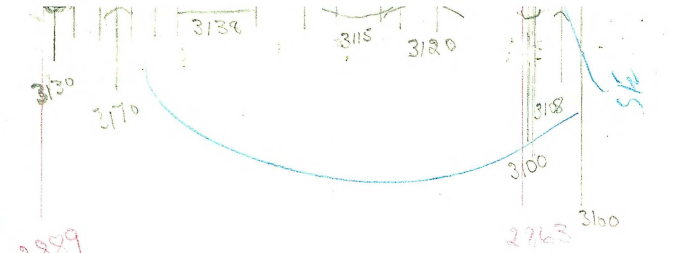
F-9

SEPT 7/65

L.287-N

2889

nc

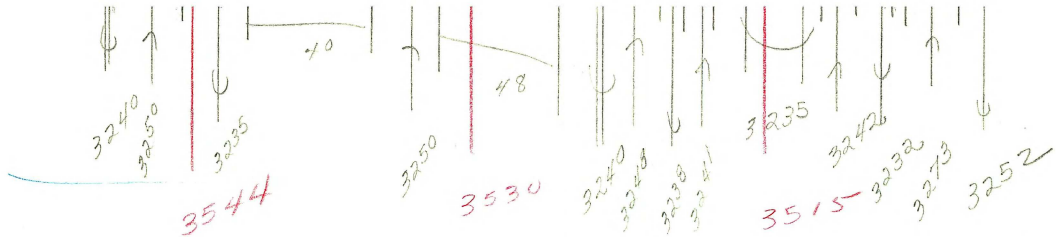


G-3174

F-9

SEPT 7/65

L.287-N



3544

3530

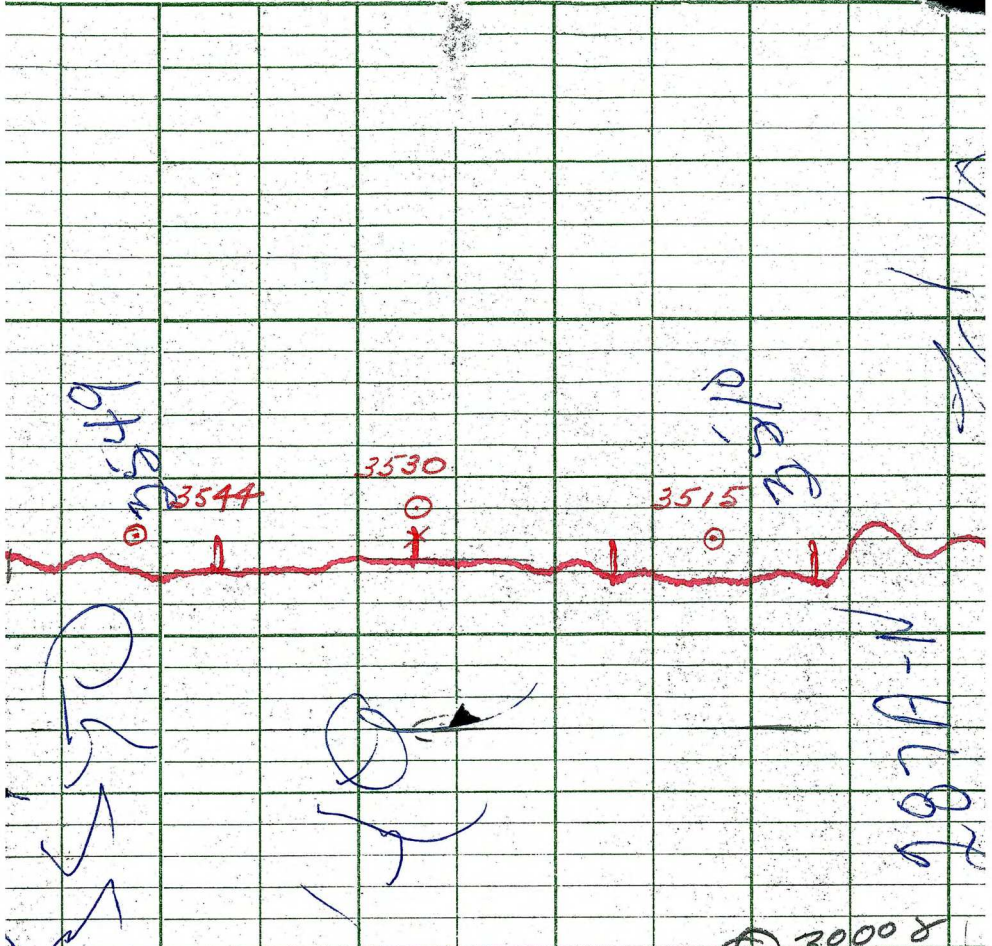
3515

G 3174
 Sept 17

T287A

John E

N.T.



LOCKWOOD SURVEY CORP., LTD.

GULF MK 111 AIRBORNE MAGNETOMETER PROFILE

Job No. J-3174 Flight No. 15

Date Flown SEPT. 17/54 Aircraft MILL Line No. 2570 N

Sensitivity Full Scale 1200γ Steps 1000γ

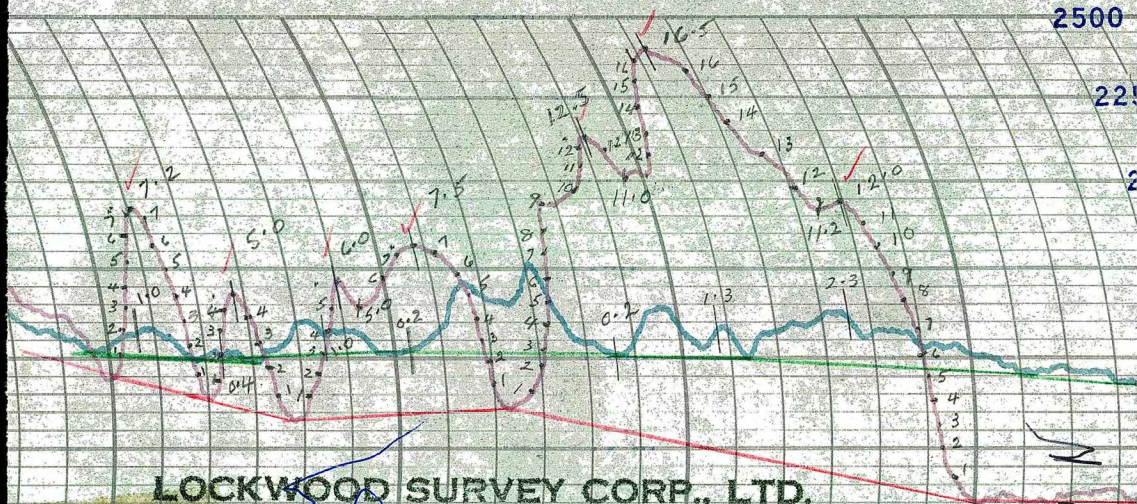
Height Flown 200' Tape Speed 4" PM

HAOR

[Large blue scribble]

2500

22.



LOCKWOOD SURVEY CORP., LTD.
ELECTROMAGNETOMETER PROFILES.

Job No. J-3774 Flight No. 9
 Date Flown SEPT. 2, 1965 Aircraft M.14 Line No. 287-N
 Sensitivity, In Phase 0.4% F.S. Out of Phase 0.4% F.S.
 Flying Height 200' Bird Height 150'
 Tape Speed 3" PM

$\frac{5.0}{0.4}$

$\frac{6.0}{1.0}$

$\frac{7.5}{0.2}$

$\frac{12.0}{0.2}$

$\frac{16.5}{1.3}$

$\frac{12.0}{2.3}$

2889

2863

2858

2844

2835

2820

287-N

2500

ELECTROMAGNETOMETER PROFILES

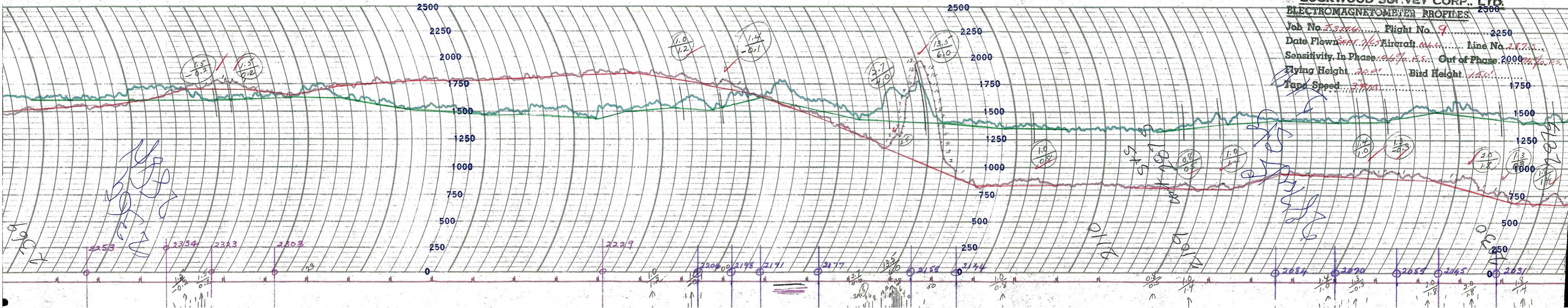
Job No. F.3.174 Flight No. 9

Date Flown SEPT. 7/45 Aircraft M.L.H. Line No. 2875

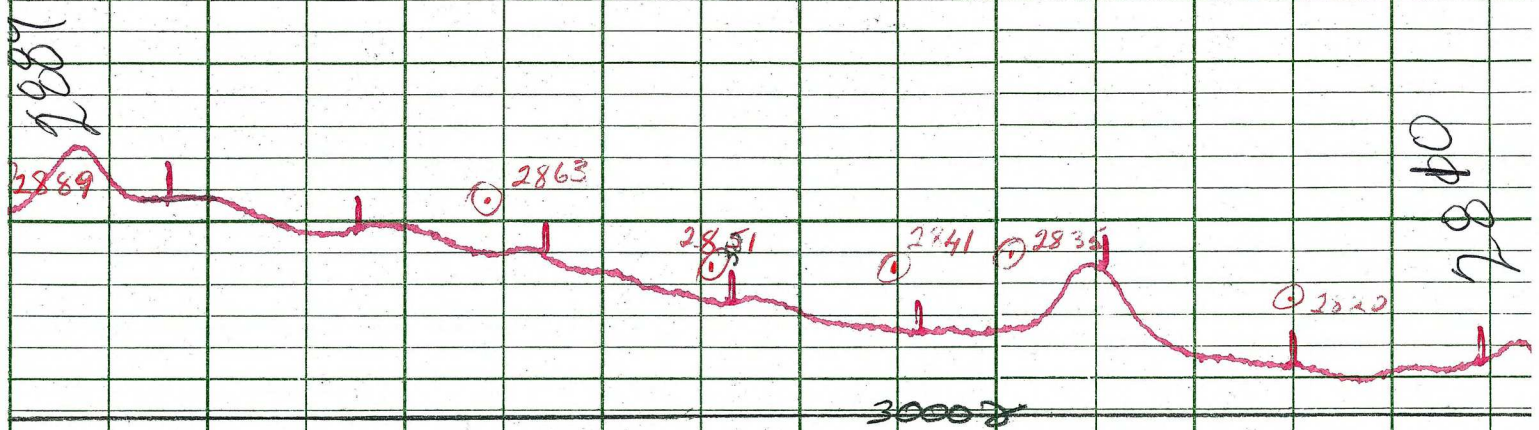
Sensitivity, In Phase 0.1% F.S. Out of Phase 2000% F.S.

Flying Height 200' Bird Height 150'

Tape Speed 3771



jc



1869
 1869
 1869

LOCKWOOD SURVEY CORP., LTD.
GULF MK 111 AIRBORNE MAGNETOMETER PROFILE

Job No. L-3174..... Flight No. 9.....
 Date Flown SEPT. 7/55 Aircraft M46..... Line No. 287 IV
 Sensitivity Full Scale 1200γ..... Steps 1000γ.....
 Height Flown 1000'..... Tape Speed 4" PM.....