

LOCKWOOD SURVEY CORPORATION LIMITED

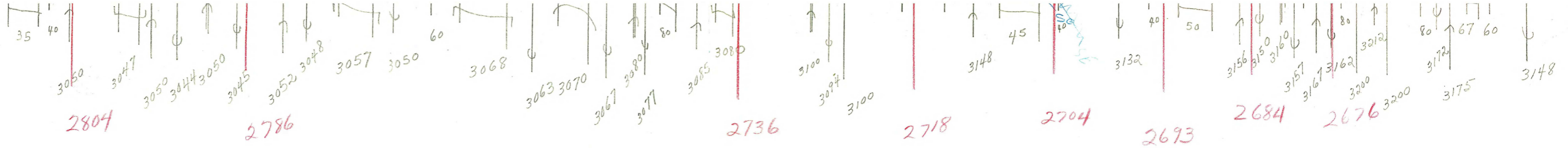
CONTRACT # 3174
FLIGHT # 9715
DATE FLOWN Sept 7-65
Sept 17-65
AIRCRAFT M.B.
FLYING HEIGHT 200'

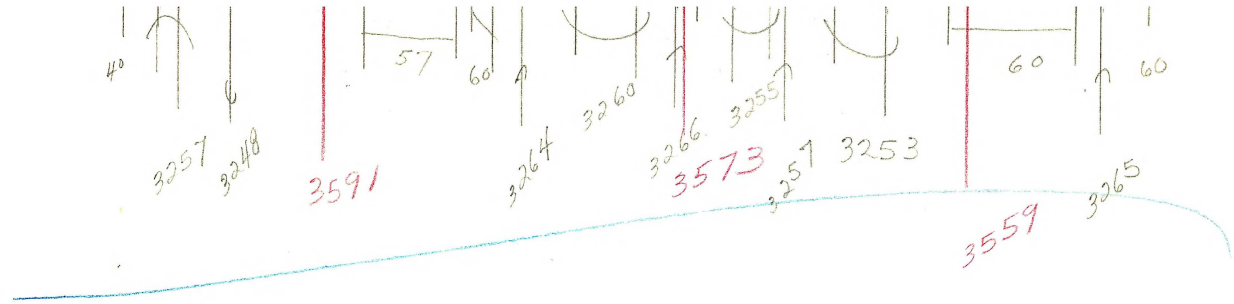
PROFILES
GULF MAGNETOMETER Mk III 4 /MINUTE
SENSITIVITY 1200
APN-1 RADIO ALTIMETER _____ /MINUTE
SENSITIVITY _____

288A-S
LINE No. 288N
288S

017268

LOCKWOOD SURVEY CORP., LTD.
ELECTROMAGNETOMETER PROFILES.
Job No..... Flight No.....
Date Flown..... Aircraft..... Line No.....
Sensitivity, In Phase..... Out of Phase.....
Flying Height..... Bird Height.....
Tape Speed.....

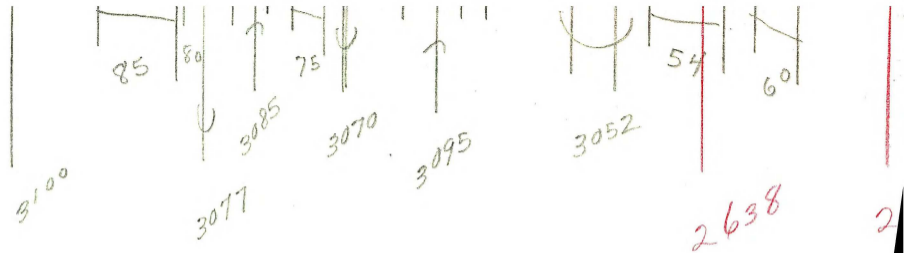




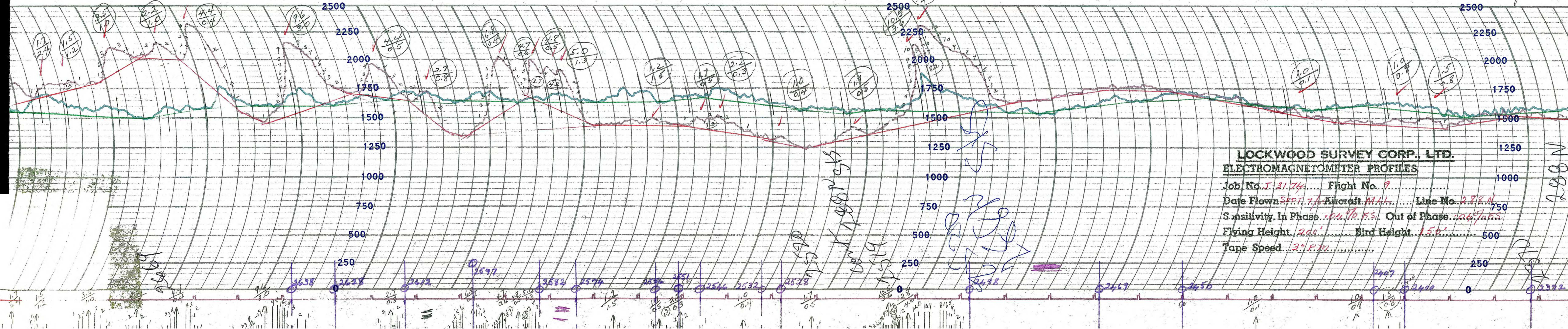
G 3174
 Sept 17
 T 288 A
 Inter Em.

G 3174
Sept 7-65
T 288N

Inter low



gc



LOCKWOOD SURVEY CORP., LTD.

ELECTROMAGNETOMETER PROFILES

Job No. *J-3174* Flight No. *7*

Date Flown *SEPT. 7, 1954* Aircraft *MAL* Line No. *288N*

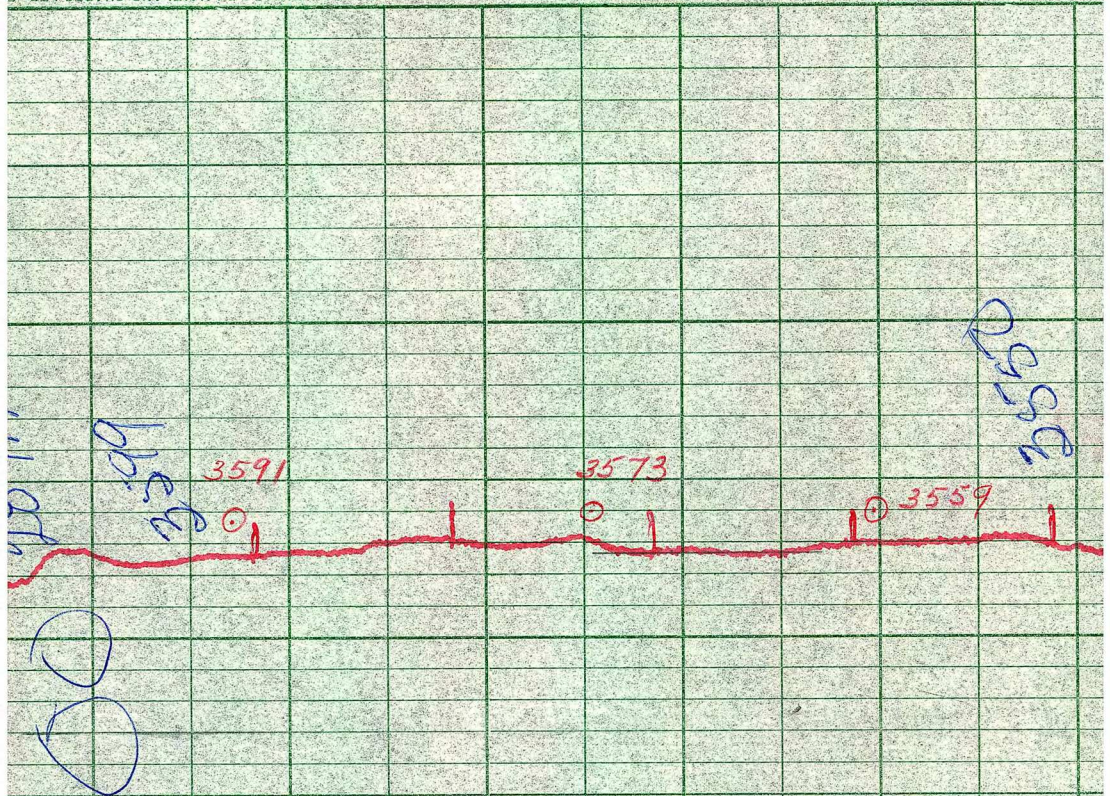
Sensitivity, In Phase *0.04 to 0.5* Out of Phase *0.04 to 0.5*

Flying Height *200'* Bird Height *150'*

Tape Speed *24 P.M.*

288N

2392



LOCKWOOD SURVEY CORP., LTD.
GULF MK III AIRBORNE MAGNETOMETER PROFILE

Job No. 3174 Flight No. 15
 Date Flown SEPT. 17/69 Aircraft M11A Line No. 2550
 Sensitivity Full Scale 12000 Steps 10000
 Height Flown 2001 Tape Speed 1" PM

MADE IN U.S.A.
15.4
2.0
14.0
1.0
4.1

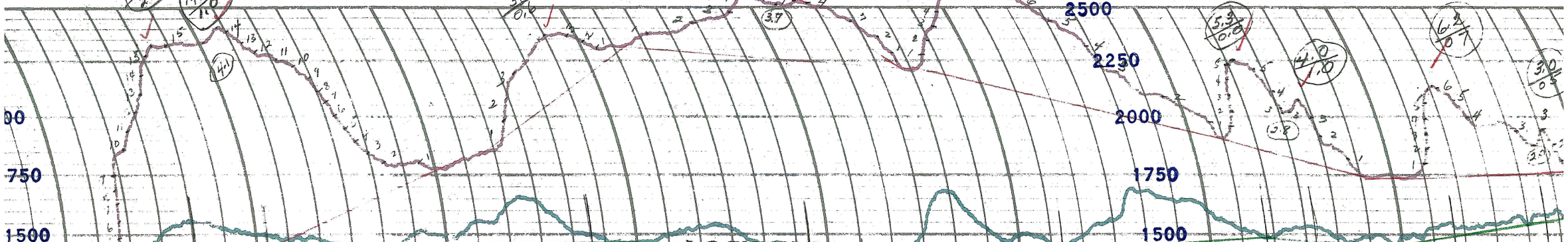
ESTERLINE ANGUS

INDIANAPOLIS, IND., U.S.A.

E.S.

6.7
0.1

20



LOCKWOOD SURVEY CORP., LTD.
ELECTROMAGNETOMETER PROFILES.

Job No. J 3174..... Flight No. 9.....
 Date Flown SEPT. 9/6 Aircraft MIL..... Line No. 288-5
 Sensitivity In Phase .04 γ/F.S. Out of Phase .04 γ/F.S.
 Flying Height 200'..... Bird Height 150'.....
 Tape Speed 3" P.M......

Handwritten notes and diagrams in blue ink, including a large 'J' and a sketch of a profile.

2005

2070

2804

2786

2736

2718

2704

2693

2684

2676

