

LOCKWOOD SURVEY CORPORATION LIMITED

CONTRACT # G-3174
FLIGHT # 10
DATE FLOWN Sept 8/65
AIRCRAFT HLL
FLYING HEIGHT 200'

PROFILES
GULF MAGNETOMETER Mk III 4" P/MINUTE
SENSITIVITY 1200 X
APN-1 RADIO ALTIMETER...../MINUTE
SENSITIVITY.....

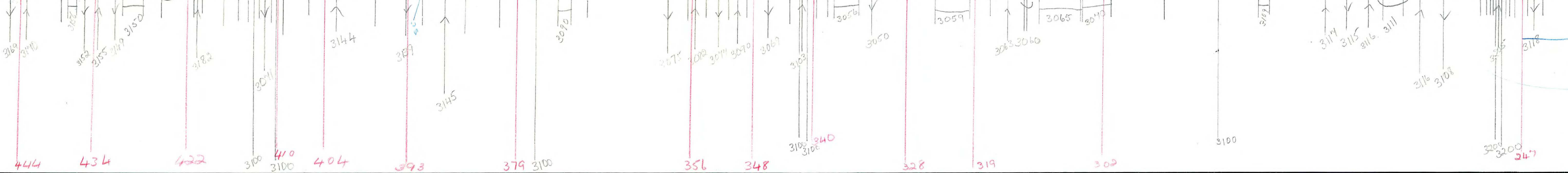
LINE No. 289-N
289A-N
017270

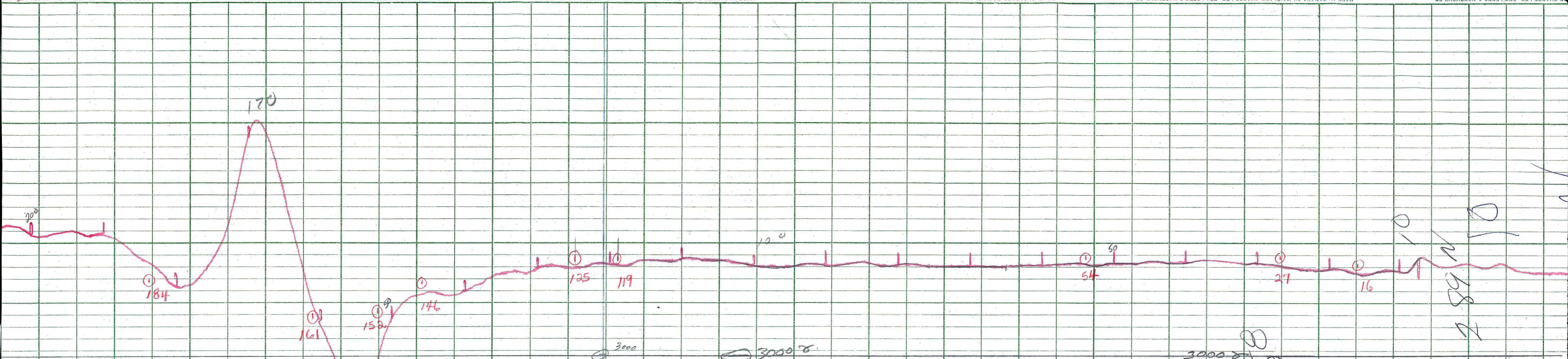
LOCKWOOD SURVEY CORP., LTD.
ELECTROMAGNETOMETER PROFILES.

Job No..... Flight No.....
Date Flown..... Aircraft..... Line No.....
Sensitivity, In Phase..... Out of Phase.....
Flying Height..... Bird Height.....
Tape Speed.....

Job - G-3174
Flt - 10
Date - Sept 8/65
LN. - 289-N.

AT.





LOCKWOOD SURVEY CORP., LTD.
GULF MK 111 AIRBORNE MAGNETOMETER PROFILE
 Job No. 89-3171 Flight No. 10
 Date Flown SEPT 8/57 Aircraft MAL Line No. 289-N
 Sensitivity Full Scale 1200 γ Steps 1000 γ
 Height Flown 10000' Tape Speed 4" PM

3280
3252
3263
3258

3639

3268
3260
3263
3255
3262

3613

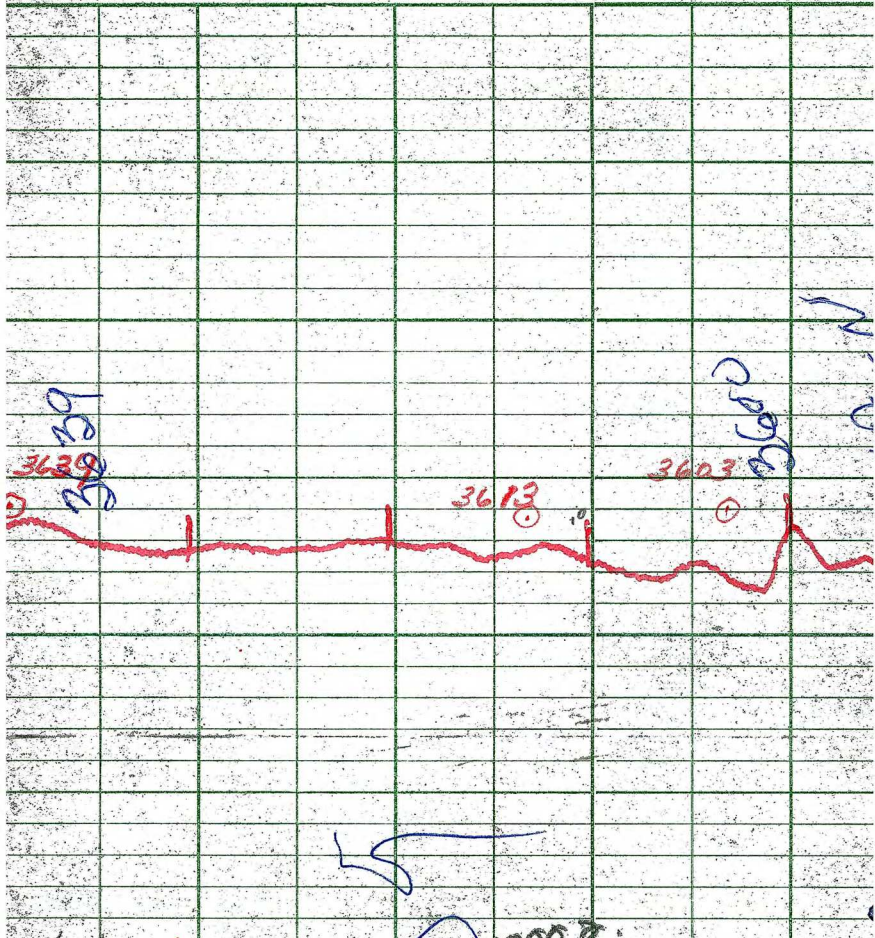
3240
3250
3232
3213
3248

3603

G 3174
Sept 17

T289A

Inter En



LOCKWOOD SURVEY CORP., LTD.

GULF MK 111 AIRBORNE MAGNETOMETER PROFILE

Job No. J-3174 Flight No. 15

Date Flown SEPT. 17/66 Aircraft 111 Line No. 289 A-N

Sensitivity Full Scale 120.0γ Steps 1.0 u.γ

Height Flown 200' Tape Speed 4" PM

[Handwritten signature]