

LOCKWOOD SURVEY CORPORATION LIMITED

CONTRACT # G-3174
FLIGHT # 15
DATE FLOWN Sept. 17/65
AIRCRAFT M.L.L.
FLYING HEIGHT 200'

PROFILES
GULF MAGNETOMETER Mk III 4" P/MINUTE
SENSITIVITY 1200 γ
APN-1 RADIO ALTIMETER...../MINUTE
SENSITIVITY.....

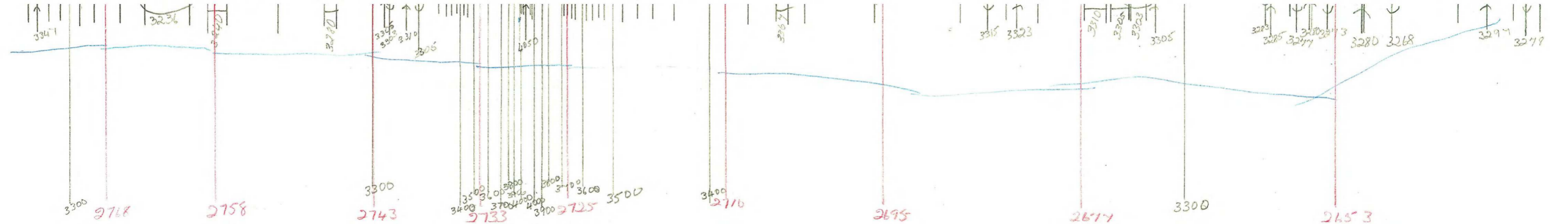
LINE No. 289-B-N.

017271

LOCKWOOD SURVEY CORP., LTD.
ELECTROMAGNETOMETER PROFILES.

Job No..... Flight No.....
Date Flown..... Aircraft..... Line No.....
Sensitivity, In Phase..... Out of Phase.....
Flying Height..... Bird Height.....
Tape Speed.....

Job - 3174
 Flt - 15
 Date - Sept 17/65
 LN - 289-B N.



Job - 3174
 Flt - 15
 Date - Sept 17/65
 LN - 289-B N.

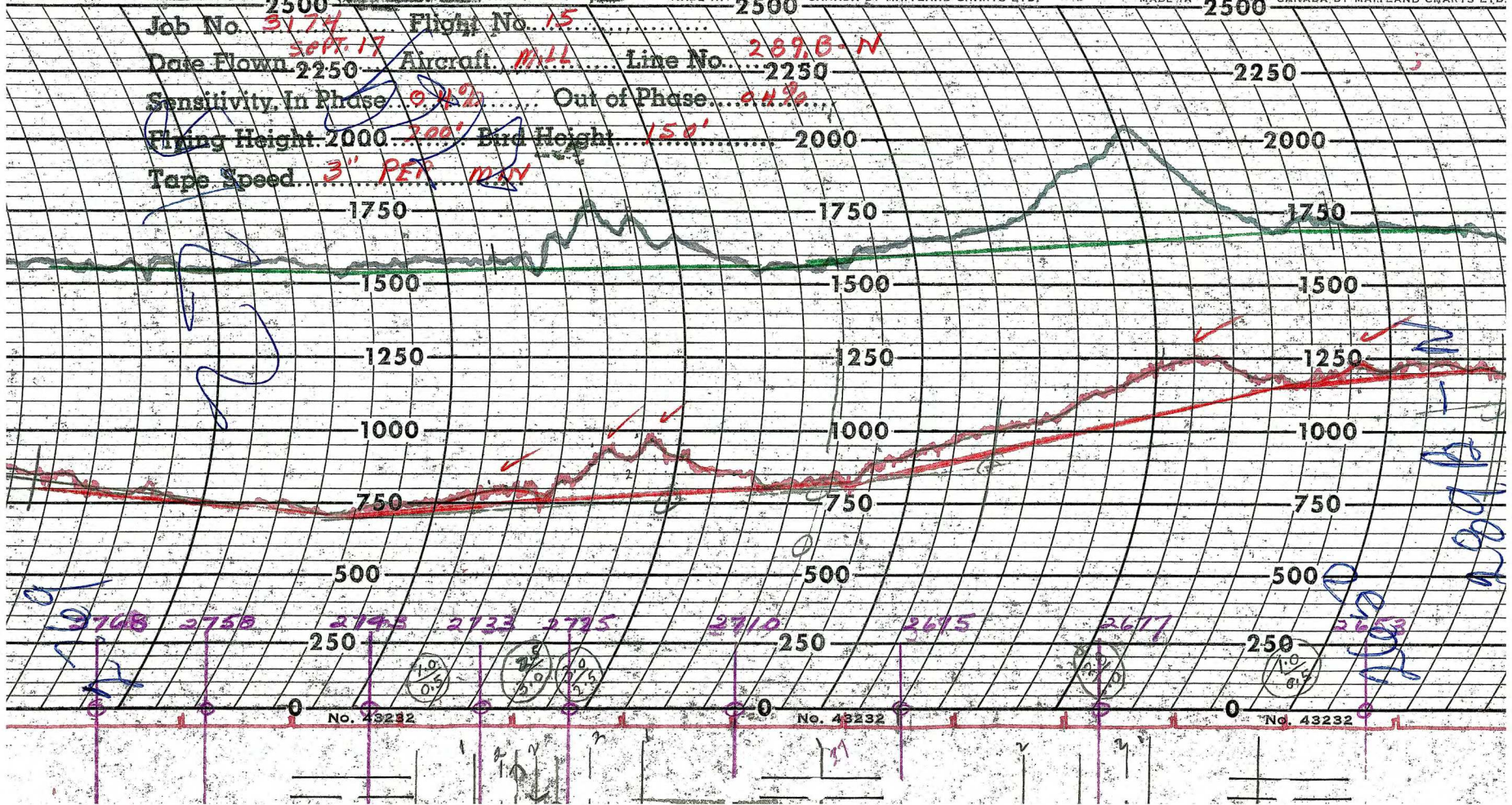
AT.

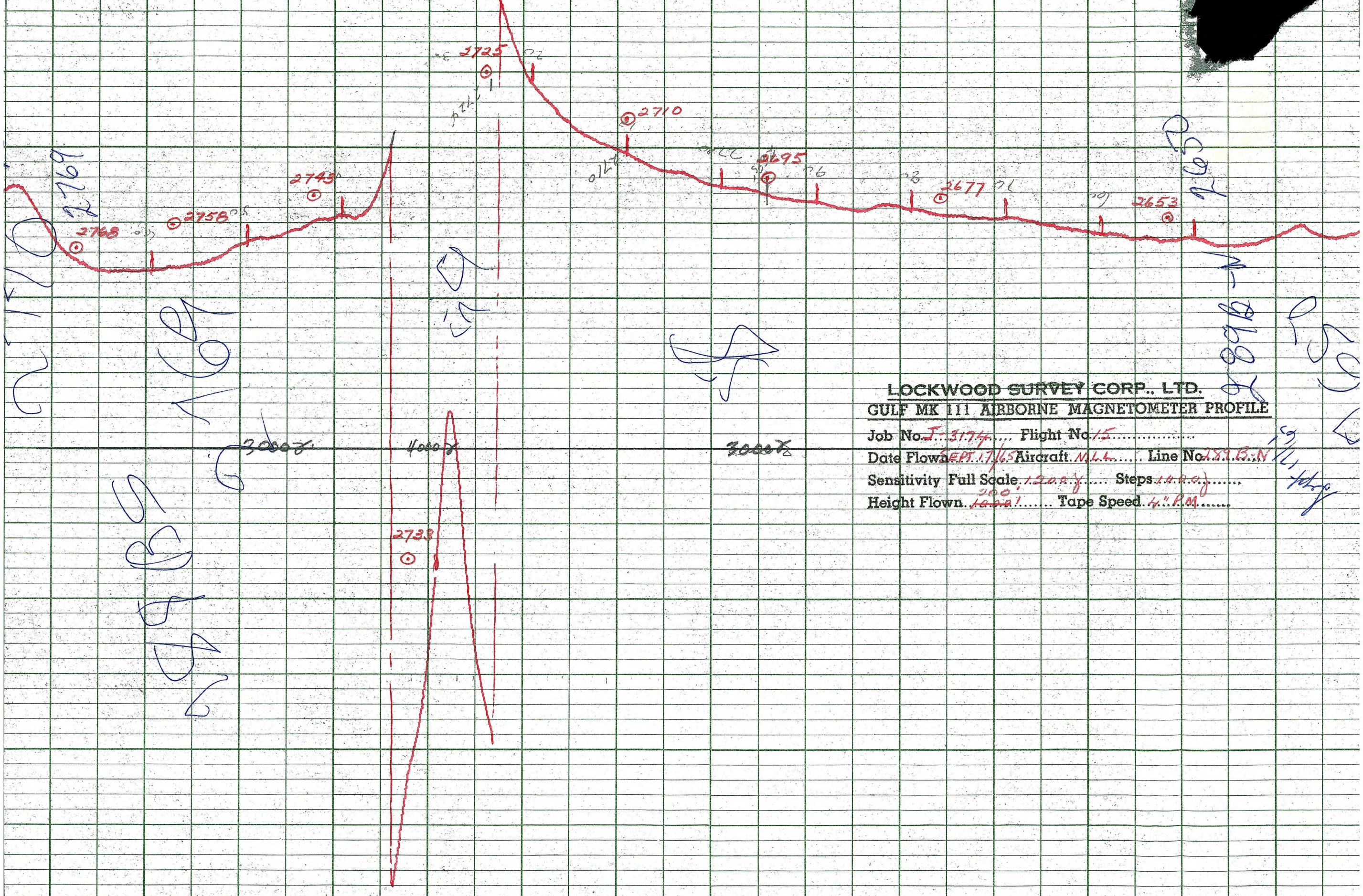
LOCKWOOD SURVEY CORP., LTD.

ELECTROMAGNETOMETER PROFILES

D CHARTS LTD. MADE IN 2500 CANADA BY MAITLAND CHARTS LTD. MADE IN 2500 CANADA BY MAITLAND CHARTS LTD.

Job No. 3174 Flight No. 15
Date Flown Sept. 17 Aircraft M11L Line No. 289B-N
Sensitivity, In Phase 9.4% Out of Phase 0.4%
Flying Height 2000 200' Bird Height 150'
Tape Speed 3" PFT MAN





LOCKWOOD SURVEY CORP., LTD.
GULF MK III AIRBORNE MAGNETOMETER PROFILE

Job No. J-3174 Flight No. 15
 Date Flown SEPT. 17/65 Aircraft M.L.L. Line No. 287.B.N
 Sensitivity Full Scale 1200 γ Steps 100 γ
 Height Flown 10000' Tape Speed 4" P.M.