

LOCKWOOD SURVEY CORPORATION LIMITED

CONTRACT # G-3174
FLIGHT # 5
DATE FLOWN Sept 3/65
AIRCRAFT Mkh
FLYING HEIGHT 200 ft

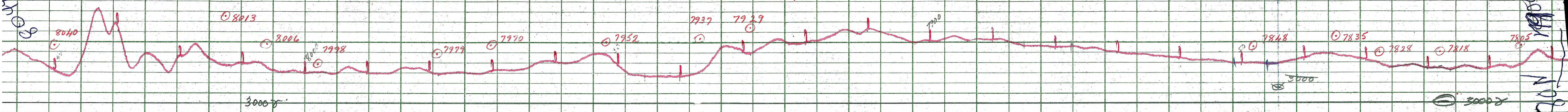
PROFILES
GULF MAGNETOMETER Mk III H /MINUTE
SENSITIVITY 1200 A.
APN-1 RADIO ALTIMETER /MINUTE
SENSITIVITY

LINE No. 80-N

017280

LOCKWOOD SURVEY CORP., LTD.
ELECTROMAGNETOMETER PROFILES

Job No..... Flight No.....
Date Flown..... Aircraft..... Line No.....
Sensitivity, In Phase..... Out of Phase.....
Flying Height..... Bird Height.....
Tape Speed.....



LOCKWOOD SURVEY CORP., LTD.
 GULF MK 111 AIRBORNE MAGNETOMETER PROFILE
 Job No. *J-21714* Flight No. *5*
 Date Flown *SEPT. 3/65* Aircraft *M.H.* Line No. *80-N*
 Sensitivity Full Scale *1200γ* Steps *100γ*
 Height Flown *1800'* Tape Speed *4" PM*

LOCKWOOD SURVEY CORP., LTD.
 GULF MK 111 AIRBORNE MAGNETOMETER PROFILE
 Job No. *J-21714* Flight No. *5*
 Date Flown *SEPT. 3/65* Aircraft *M.H.* Line No. *80-N*
 Sensitivity Full Scale *1200γ* Steps *100γ*
 Height Flown *1800'* Tape Speed *4" PM*

J. Carlin

723
(BY EXTRAP.)

2500

2250

2000

1750

1500

1250

1000

750

500

250

0

2500

2250

2000

1750

1500

1250

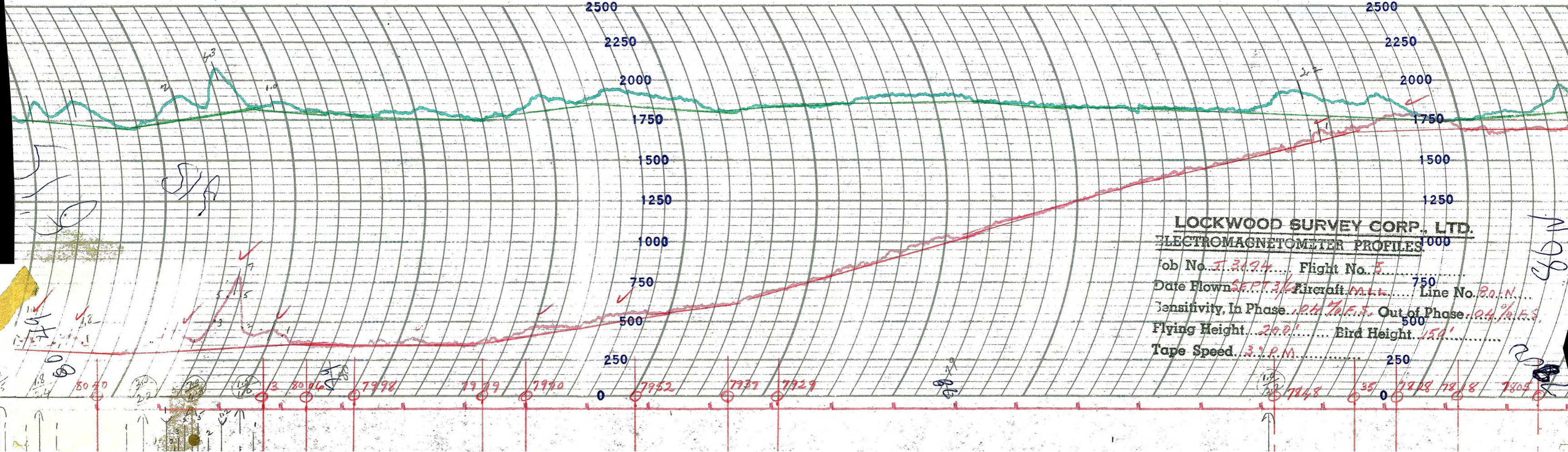
1000

750

500

250

0



LOCKWOOD SURVEY CORP., LTD.
ELECTROMETER PROFILES

Job No. J. 3194 Flight No. 5
 Date Flown SEPT. 3/6 Aircraft M.L.L. Line No. 80-N
 Sensitivity, In Phase 1.24 % F.S. Out of Phase 0.4 % F.S.
 Flying Height 200' Bird Height 150'
 Tape Speed 3.0 P.M.

M 98

308

1.4
1.5
1.8
2.4
80 80
20
20
13
80 80
7998
7999
7990
7952
7937
7929
7948
35
7928
7818
7805