

LOCKWOOD SURVEY CORPORATION LIMITED

CONTRACT # G-3174
FLIGHT # 5
DATE FLOWN SEPT 3/65
AIRCRAFT MLL
FLYING HEIGHT 200'

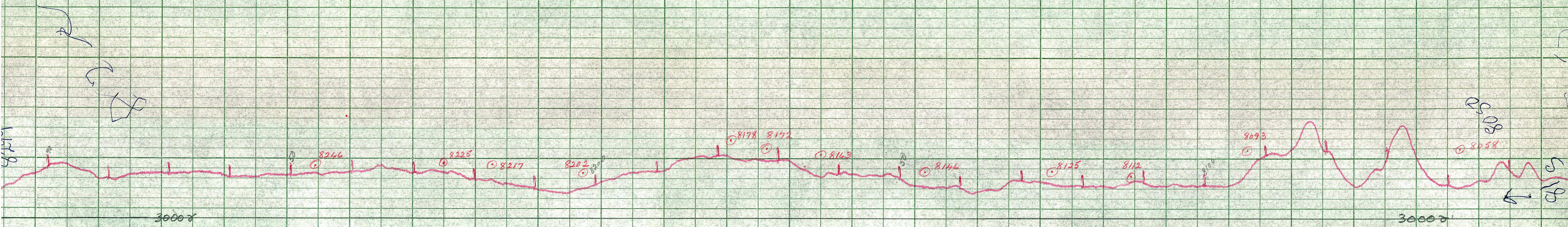
PROFILES CHART SPEED
GULF MAGNETOMETER Mk III 44/MINUTE
SENSITIVITY 1200γ
APN-1 RADIO ALTIMETER /MINUTE
SENSITIVITY

LINE No. 81-S

017281

LOCKWOOD SURVEY CORP., LTD.
ELECTROMAGNETOMETER PROFILES.

Job No..... Flight No.....
Date Flown..... Aircraft..... Line No.....
Sensitivity, In Phase..... Out of Phase.....
Flying Height..... Bird Height.....
Tape Speed.....



LOCKWOOD SURVEY CORP., LTD.
GULF MK 111 AIRBORNE MAGNETOMETER PROFILE
 Job No. J-3174 Flight No. 5
 Date Flown SEP 3/65 Aircraft M-1A Line No. 8
 Sensitivity Full Scale 1200 Steps (1000)
 Height Flown 200' Tape Speed 4" PM

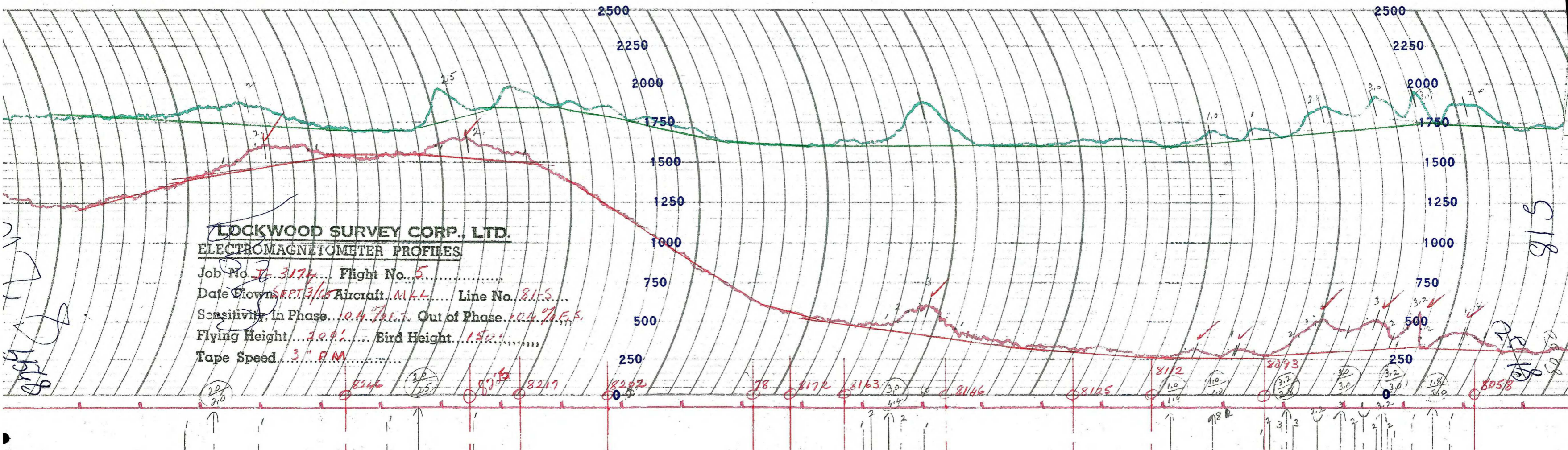
8058

8058

8058

81

8058



LOCKWOOD SURVEY CORP., LTD.
ELECTROMAGNETOMETER PROFILES

Job No. J-3174 Flight No. 5
 Date Flown SEPT 3/65 Aircraft M.L.L. Line No. 81-5
 Sensitivity, In Phase 104.7 Out of Phase 104.7 F.S.
 Flying Height 200' Bird Height 150'
 Tape Speed 3" P.M.

S 18

20/2.0
 8216
 2.0/2.5
 8217
 8202
 78
 8172
 8163
 3.0/4.4
 8146
 8125
 8112
 1.0/1.2
 8093
 3.2/2.8
 3.0/3.5
 250
 3.2/3.0
 1.8/3.0
 8058