

**LOCKWOOD SURVEY CORPORATION LIMITED**

CONTRACT # C 3174  
FLIGHT # 6  
DATE FLOWN Sept 4/65  
AIRCRAFT MLL  
FLYING HEIGHT 200

PROFILES CHART SPEED  
GULF MAGNETOMETER Mk III 4/MINUTE  
SENSITIVITY 1200  
APN-1 RADIO ALTIMETER \_\_\_\_\_/MINUTE  
SENSITIVITY \_\_\_\_\_

LINE No. 88-S

017288

**LOCKWOOD SURVEY CORP., LTD.**  
**ELECTROMAGNETOMETER PROFILES.**

Job No..... Flight No.....  
Date Flown..... Aircraft..... Line No.....  
Sensitivity, In Phase..... Out of Phase.....  
Flying Height..... Bird Height.....  
Tape Speed.....

jc

2500

LOCKWOOD SURVEY CORP., LTD.

ELECTROMAGNETOMETER PROFILES

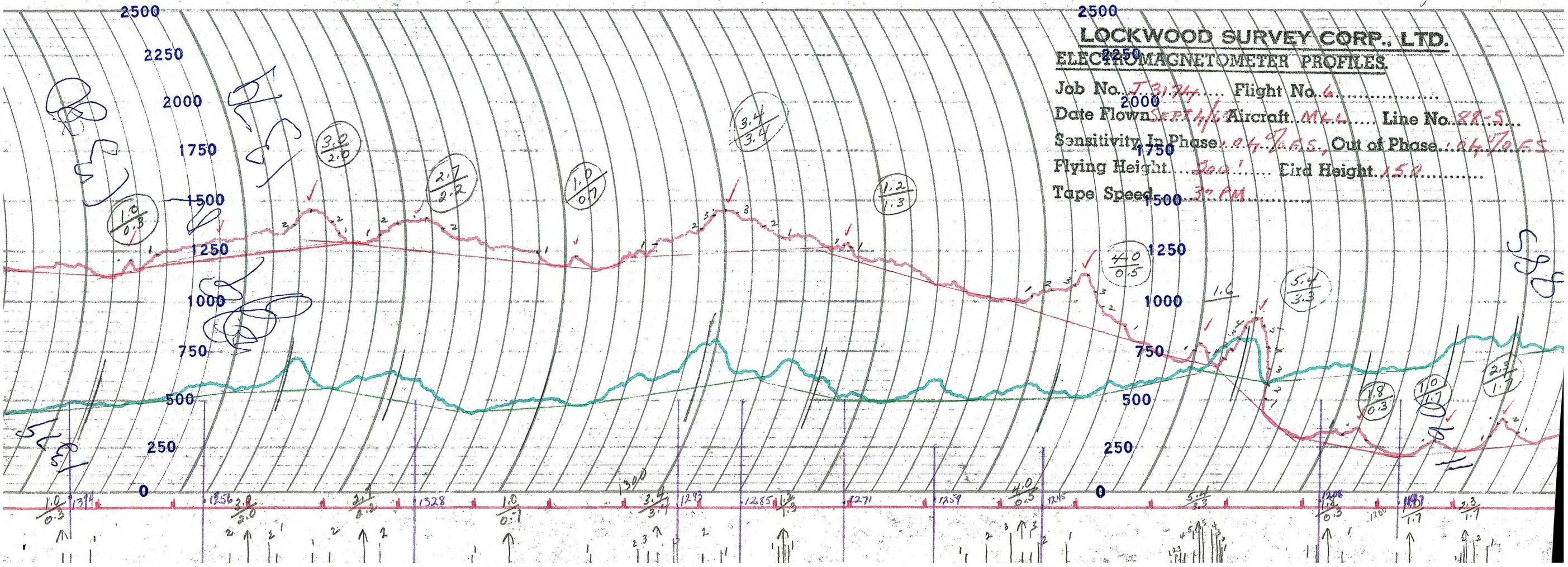
Job No. J-3174 Flight No. 6

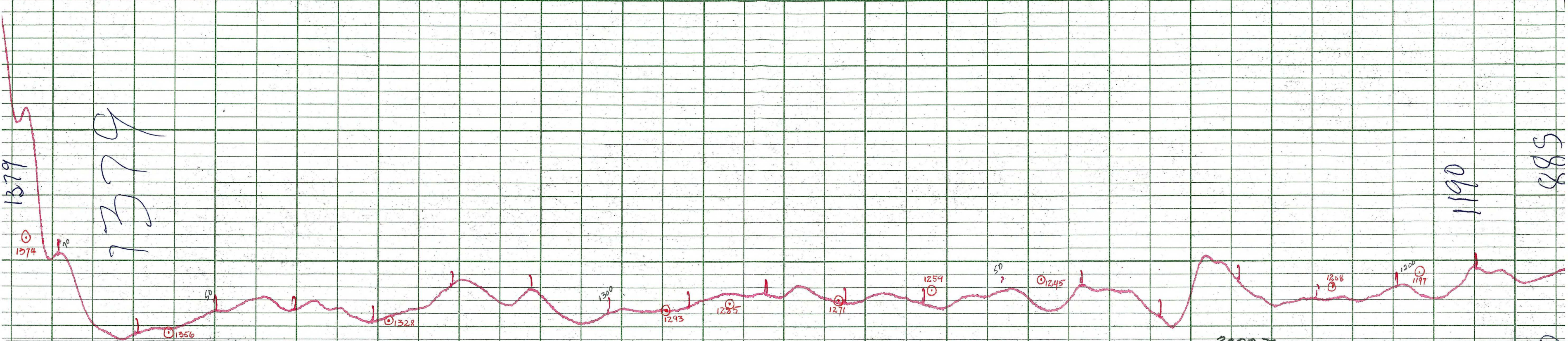
Date Flown SEPT 4/6 Aircraft M.L.L. Line No. 88-5

Sensitivity In Phase 0.4 G.A.S. Out of Phase 0.4 G.A.S.

Flying Height 500' Circle Height 15.2

Tape Speed 1500 3:27 AM





Handwritten annotations in blue and black ink are scattered across the grid. On the left side, there are several scribbles and the number '58'. In the center, there are some small sketches. On the right side, the number '1190' is written vertically, and '588' is written at the top right. A horizontal line is drawn across the grid at approximately the 3000 level, with the number '3000' written below it.

**LOCKWOOD SURVEY CORP., LTD.**  
**GULF MK 111 AIRBORNE MAGNETOMETER PROFILE**  
 Job No. J. 3124 Flight No. 6  
 Date Flown SEPT. 4/65 Aircraft 1111 Line No. 2.8.5  
 Sensitivity Full Scale 1200 Steps 1000  
 Height Flown 1000' Tape Speed 4" P.M.

Handwritten musical notation on staves, including notes, rests, and bar lines. The notation is written in black ink on a white background. A yellow highlight is present on the first staff.

Red numbers are written below the staves, likely indicating measure numbers or other identifiers:

- 1293
- 1285
- 1271
- 1259
- 1245
- 1208
- 1197

Q 3174 MLL  
 Sept 4/65  
 FLT # 6  
 88-5  
 jo