

LOCKWOOD SURVEY CORPORATION LIMITED

CONTRACT # G 3174
FLIGHT # 6
DATE FLOWN Sept 4/65
AIRCRAFT MLL
FLYING HEIGHT 200

PROFILES
GULF MAGNETOMETER Mk III 4 /MINUTE
SENSITIVITY 1200
APN-1 RADIO ALTIMETER _____ /MINUTE
SENSITIVITY _____

LINE No. 90-S

017290

LOCKWOOD SURVEY CORP., LTD.
ELECTROMAGNETOMETER PROFILES.

Job No..... Flight No.....
Date Flown..... Aircraft..... Line No.....
Sensitivity, In Phase..... Out of Phase.....
Flying Height..... Bird Height.....
Tape Speed.....

G 3174, MLL

FLT # 6

Sep 4/01

306

je

1826

1795 1787

1745

1724

← STOP + START

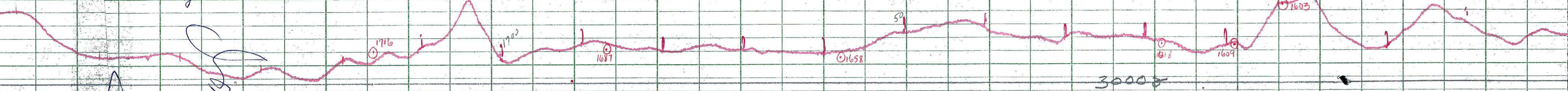
905

Handwritten notes and scribbles on the left side of the grid.

612

Handwritten notes in the upper left quadrant.

9051



LOCKWOOD SURVEY CORP., LTD.
GULF MK 111 AIRBORNE MAGNETOMETER PROFILE
 Job No. 60312 Flight No. 6
 Date Flown SEPT. 4, 1955 Aircraft M. 4-6 Line No. 20, 5
 Sensitivity Full Scale 1200 γ Steps 100 γ
 Height Flown 2,000' Tape Speed 4" P.M.

1781

1926

1795

LOCKWOOD SURVEY CORP., LTD.
GULF MK 111 AIRBORNE MAGNETOMETER PROFILE
 Job No. 33174 Flight No. 4
 Date Flown SEP. 4/65 Aircraft W-111 Line No. 90-5
 Sensitivity Full Scale 1200γ Steps 1000γ
 Height Flown 200' Tape Speed 4" P.M.

1800

1795

1797

3000γ

1745

1724

1710

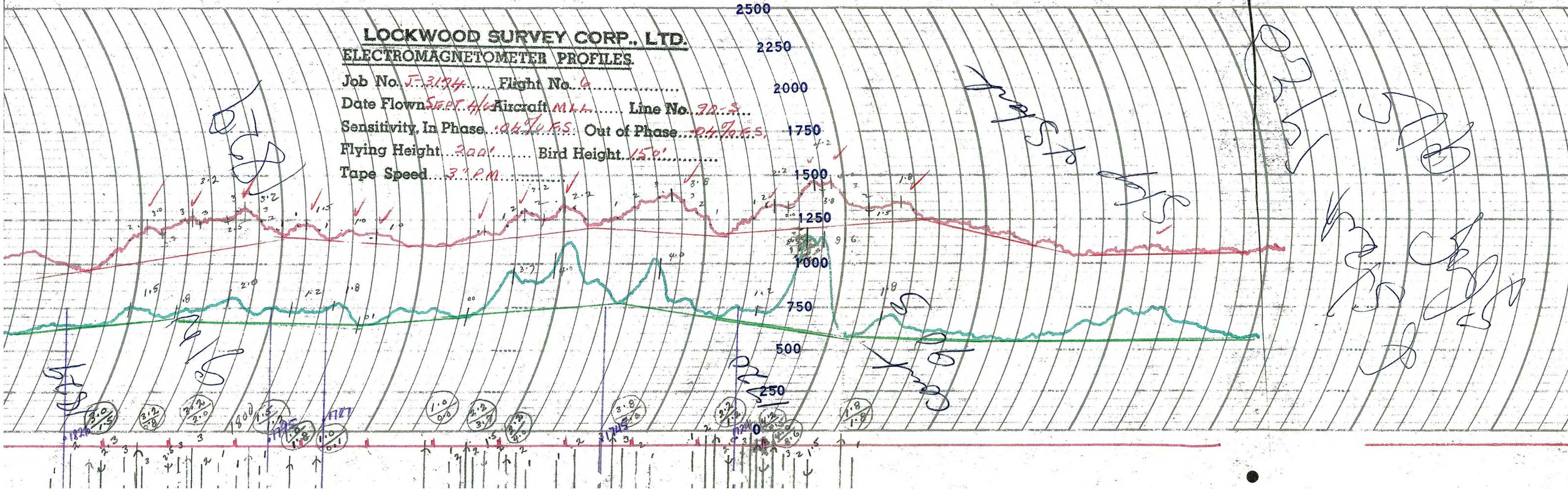
1705

1700



LOCKWOOD SURVEY CORP., LTD.
ELECTROMAGNETOMETER PROFILES

Job No. J-3174..... Flight No. 6.....
Date Flown SEPT. 4/45 Aircraft M.L.L...... Line No. 90-3.....
Sensitivity, In Phase: .04% F.S. Out of Phase: .04% F.S.
Flying Height: 200'..... Bird Height: 150'.....
Tape Speed: 3" P.M......



LOCKWOOD SURVEY CORP., LTD.
ELECTROMAGNETOMETER PROFILES

Job No. J-3174..... Flight No. 4.....
Date Flown SEPT. 4/45 Aircraft M.L.L...... Line No. 90-5.....
Sensitivity, In Phase: .04% F.S. Out of Phase: .04% F.S.
Flying Height: 200'..... Bird Height: 150'.....
Tape Speed: 3" P.M......

