

LOCKWOOD SURVEY CORPORATION LIMITED

CONTRACT # G-3174
FLIGHT # 6
DATE FLOWN SEPT 4/65
AIRCRAFT M4L
FLYING HEIGHT 200'

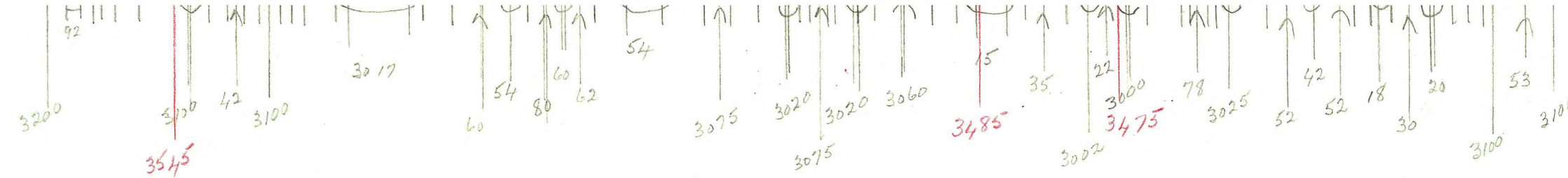
PROFILES
GULF MAGNETOMETER Mk III 4"/MINUTE
SENSITIVITY 1200γ
APN-1 RADIO ALTIMETER /MINUTE
SENSITIVITY

LINE No. 93-S & 93 A

017293

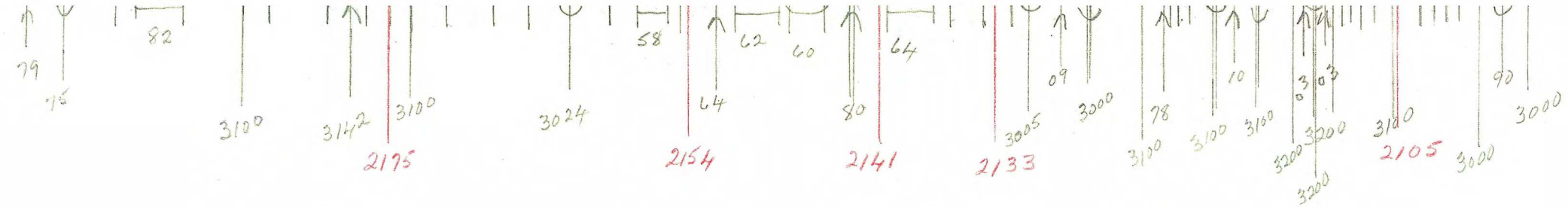
LOCKWOOD SURVEY CORP., LTD.
ELECTROMAGNETOMETER PROFILES.

Job No..... Flight No.....
Date Flown..... Aircraft..... Line No.....
Sensitivity, In Phase..... Out of Phase.....
Flying Height..... Bird Height.....
Tape Speed.....



G 3174
 T-93-S
 SEPT 4/65
 FLT 6

J.B.



G-3174
 T-93-N
 SEPT 4/65
 FLT 6

J.B.

9e

00

2250

2000

1750

1500

1250

1000

750

500

250

0

LOCKWOOD SURVEY CORP., LTD.

ELECTROMAGNETOMETER PROFILES

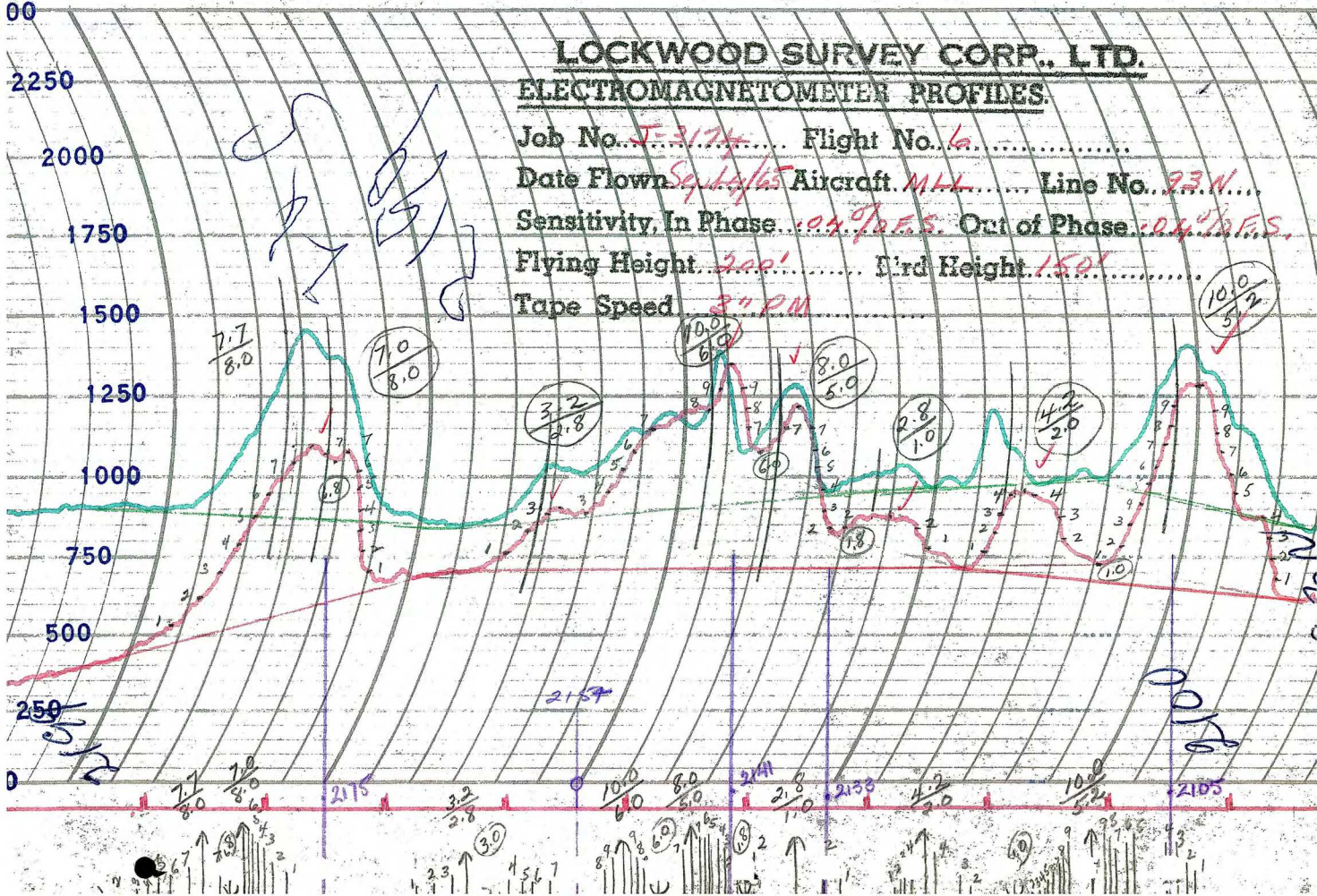
Job No. J-3174 Flight No. 6

Date Flown Sep 14/65 Aircraft MLL Line No. 93N

Sensitivity, In Phase: 0.4% of F.S. Out of Phase: 0.4% of F.S.

Flying Height: 200' Bird Height: 150'

Tape Speed 24 PM



LOCKWOOD SURVEY CORP., LTD.

ELECTROMAGNETOMETER PROFILES

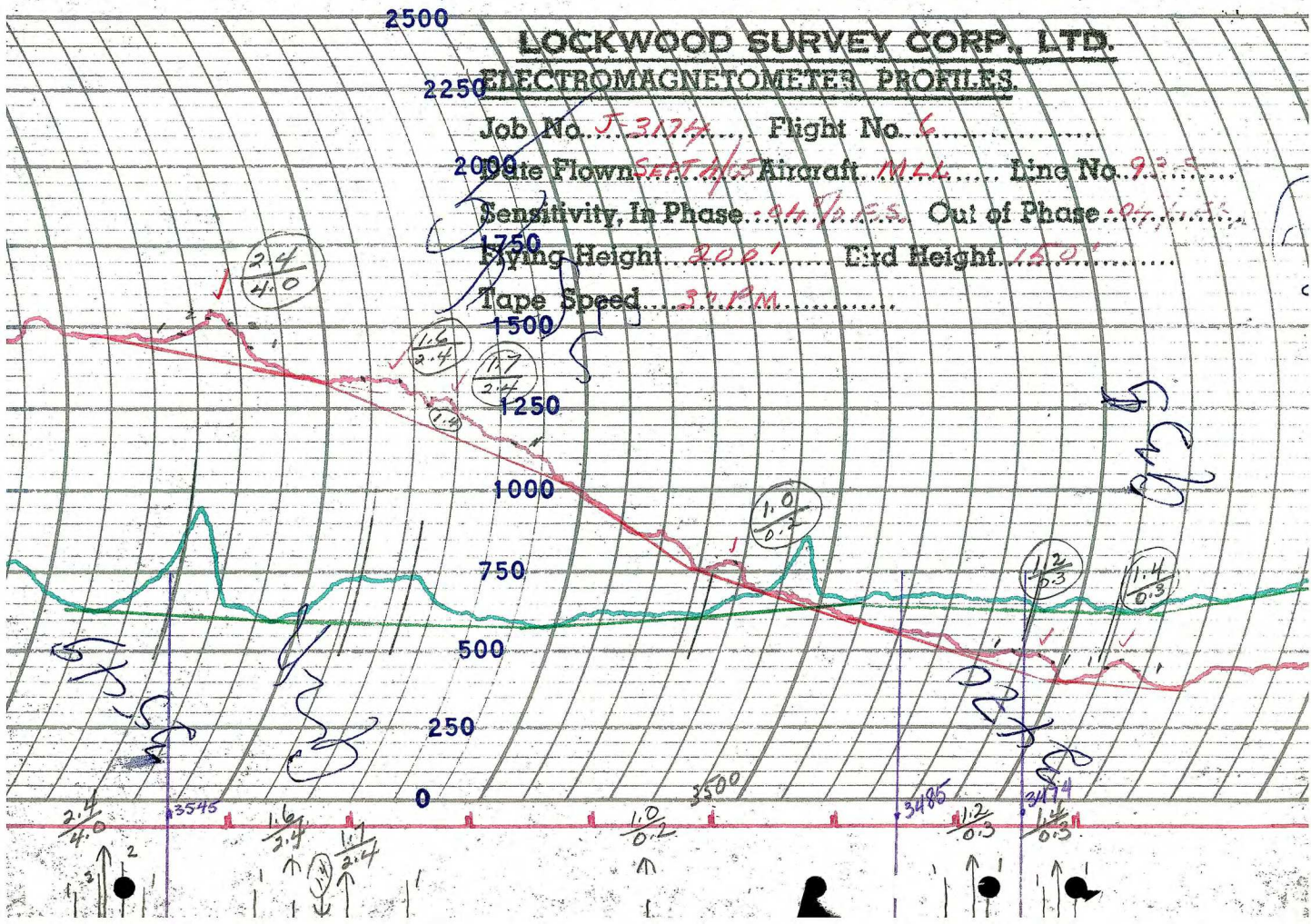
Job No. J-3174 Flight No. 6

Date Flown SEPT 11/5 Aircraft M.L.L. Line No. 9-5

Sensitivity, In Phase: 94.5 G.P.S. Out of Phase: 97.5 G.P.S.

Flying Height 300' Grid Height 150'

Tape Speed 57 P.M.



940

2199

945

2175

2154

2147

2133

3000

2105

93 N

North End

2100

LOCKWOOD SURVEY CORP., LTD.
GULF MK 111 AIRBORNE MAGNETOMETER PROFILE
 Job No. J-3174..... Flight No. 6.....
 Date Flown SEPT. 4/65 Aircraft M.L.L...... Line No. 93-N.....
 Sensitivity Full Scale 1200 γ..... Steps 1000 γ.....
 Height Flown 200'..... Tape Speed 4" PM.....

