

LOCKWOOD SURVEY CORPORATION LIMITED

CONTRACT # 3174
FLIGHT # 6
DATE FLOWN SEPT-14-65
AIRCRAFT CP-MLL
FLYING HEIGHT 200'

PROFILES
GULF MAGNETOMETER Mk III 4 /MINUTE
SENSITIVITY 1200γ
APN-1 RADIO ALTIMETER _____ /MINUTE
SENSITIVITY _____

LINE No. 95-N

017295

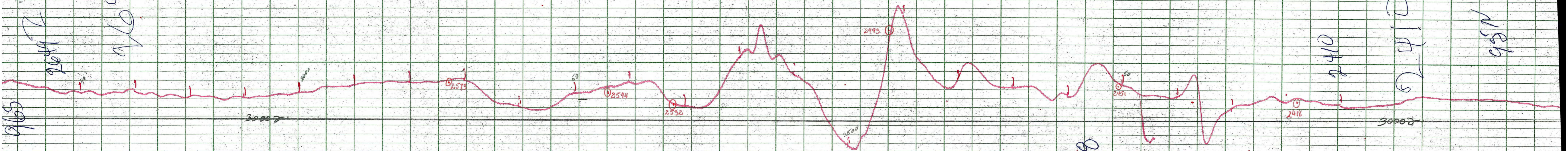
LOCKWOOD SURVEY CORP., LTD.
ELECTROMAGNETOMETER PROFILES.

Job No..... Flight No.....
Date Flown..... Aircraft..... Line No.....
Sensitivity, In Phase..... Out of Phase.....
Flying Height..... Bird Height.....
Tape Speed.....

259765
965

7649
1649

2410
2410
156



LOCKWOOD SURVEY CORP., LTD.
 GULF MK 111 AIRBORNE MAGNETOMETER PROFILE
 Job No. J-3174 Flight No. 6
 Date Flown SEP 4/65 Aircraft M.L.L. Line No. 95-N
 Sensitivity Full Scale 1200x Steps 1000x
 Height Flown 2000' Tape Speed 4" P.M.

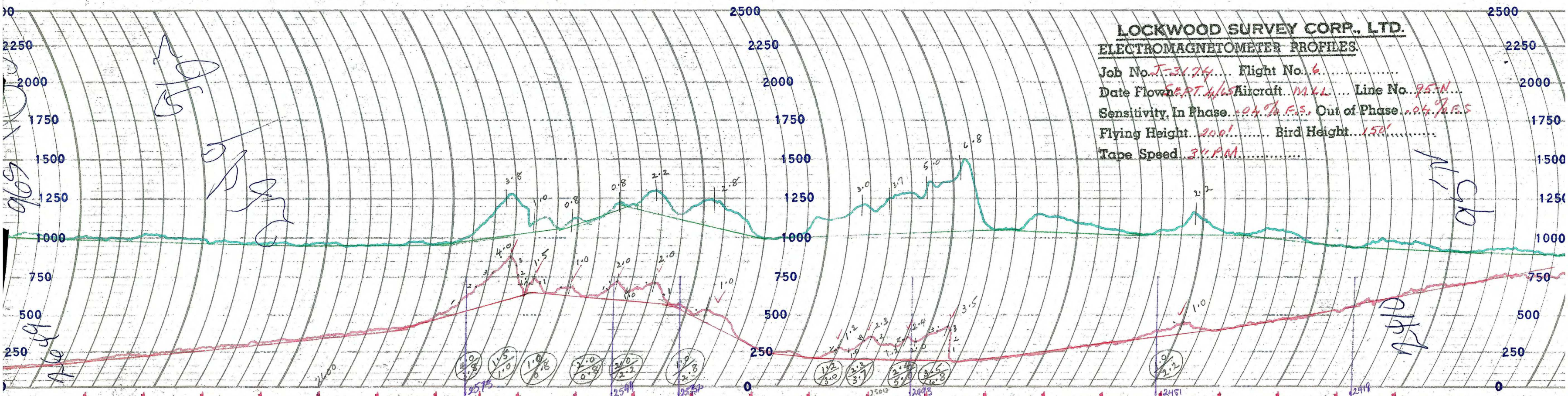
LOCKWOOD SURVEY CORP., LTD.
 GULF MK 111 AIRBORNE MAGNETOMETER PROFILE
 Job No. J-3174 Flight No. 6
 Date Flown SEP 4/65 Aircraft M.L.L. Line No. 95-N
 Sensitivity Full Scale 1200x Steps 1000x
 Height Flown 2000' Tape Speed 4" P.M.

25

LOCKWOOD SURVEY CORP., LTD.

ELECTROMAGNETOMETER PROFILES

Job No. *J-3174*... Flight No. *6*.....
 Date Flown *SEPT. 4/15* Aircraft *M.L.L.*... Line No. *95-N*...
 Sensitivity, In Phase *0.4% F.S.*, Out of Phase *0.4% F.S.*
 Flying Height *200'*..... Bird Height *150'*.....
 Tape Speed *311 P.M.*.....



9/15
Ave 49

Handwritten scribbles and notes on the left side of the chart.

Handwritten notes on the right side of the chart, including 'NCP' and 'Ave 49'.

