

LOCKWOOD SURVEY CORPORATION LIMITED

CONTRACT # G-3174
FLIGHT # 4
DATE FLOWN SEPT 4/65
AIRCRAFT MLL
FLYING HEIGHT 200'

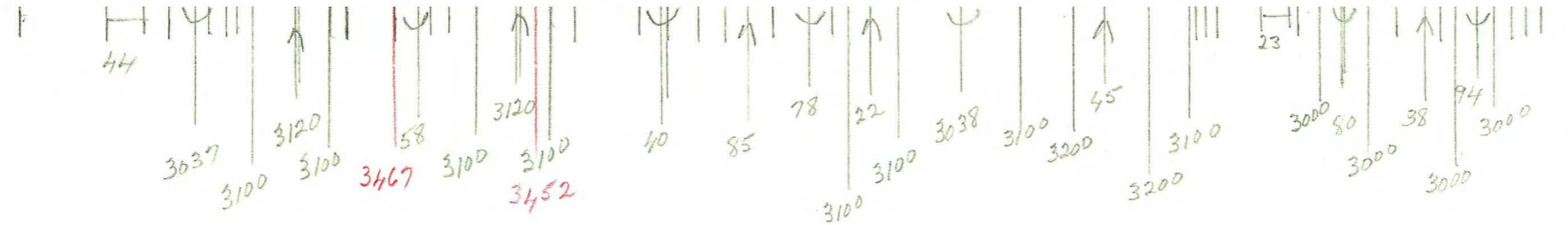
PROFILES - 2
GULF MAGNETOMETER Mk III 4" /MINUTE
SENSITIVITY 1200
APN-1 RADIO ALTIMETER _____ /MINUTE
SENSITIVITY _____

LINE No. 96-5

017296

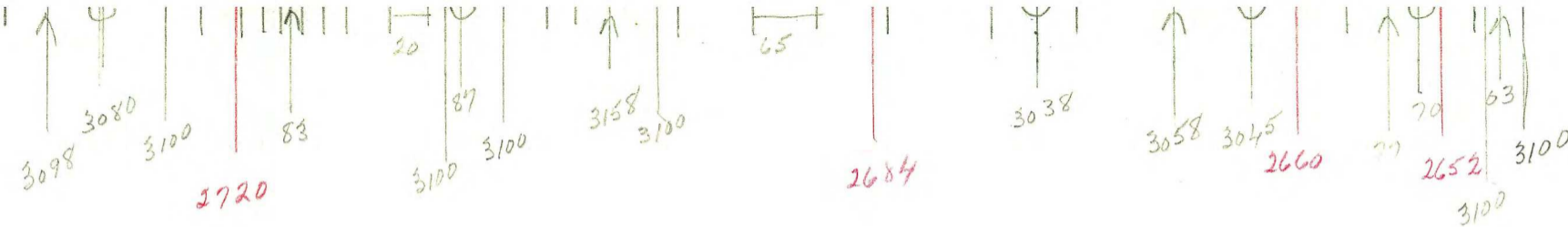
LOCKWOOD SURVEY CORP., LTD.
ELECTROMAGNETIC SURVEYING DEPT.

Job No..... Flight No.....
Date Flown..... Aircraft..... Line No.....
Sensitivity, In Phase..... Out of Phase.....
Flying Height..... Bird Height.....
Tape Speed.....



G-311,
 T-96-5
 SEPT 4/65
 FLT 6

J.B.



G-3174
 T-96-S
 SEPT 4/65
 FLT-6

J.B.

2500

2250

LOCKWOOD SURVEY CORP., LTD.

ELECTROMAGNETIC PROFILES

Job No. J-3174 Sta. 6

Date Flown SEPT. 4/5 Line No. 26-S

Sensitivity, In Phase .04% F.S. Out of Phase .06% F.S.

Flying Height 200' Ground Height 150'

Tape Speed 3" P.M.

2000

1750

1500

1250

1000

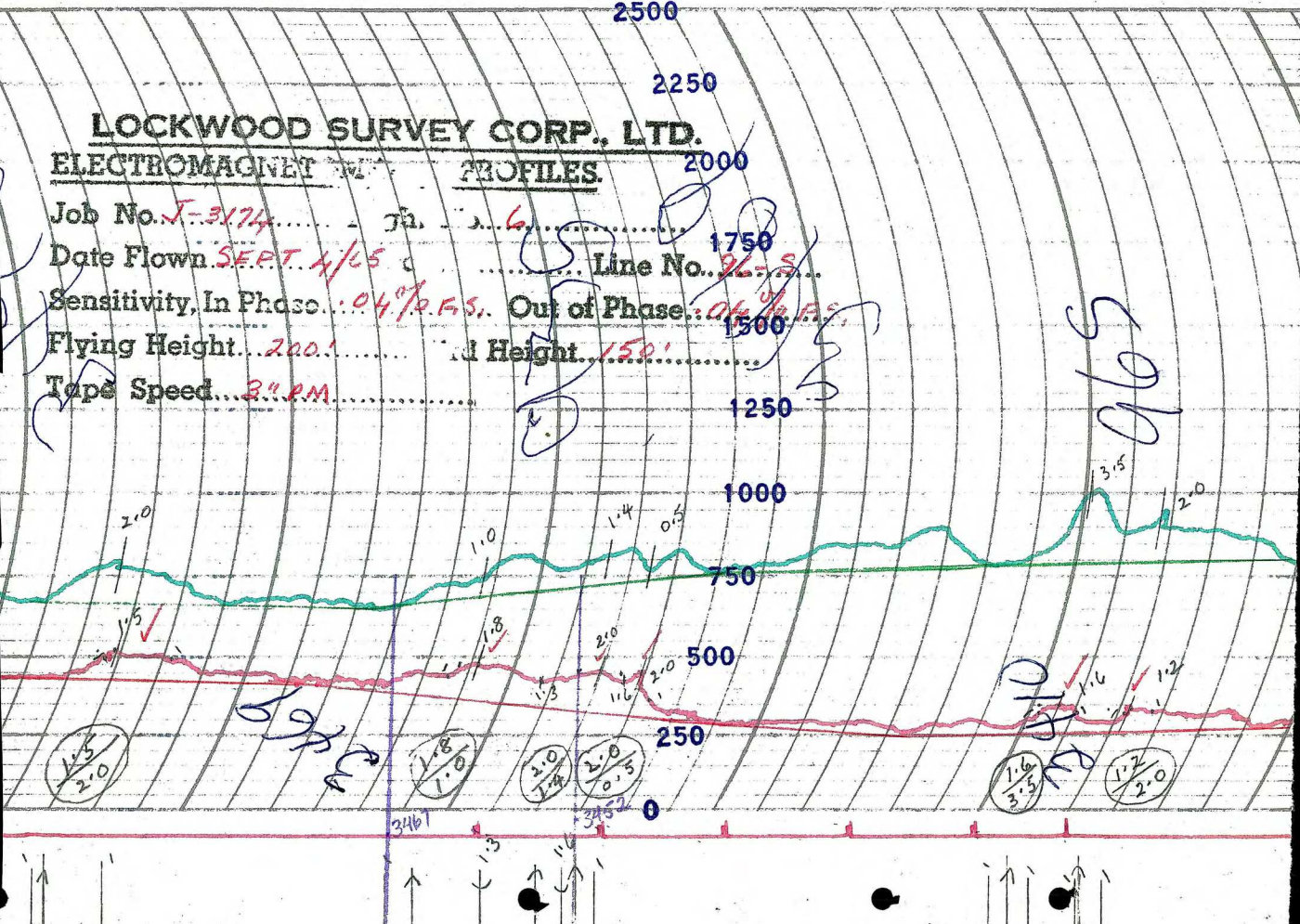
750

500

250

0

500



3461

1.3

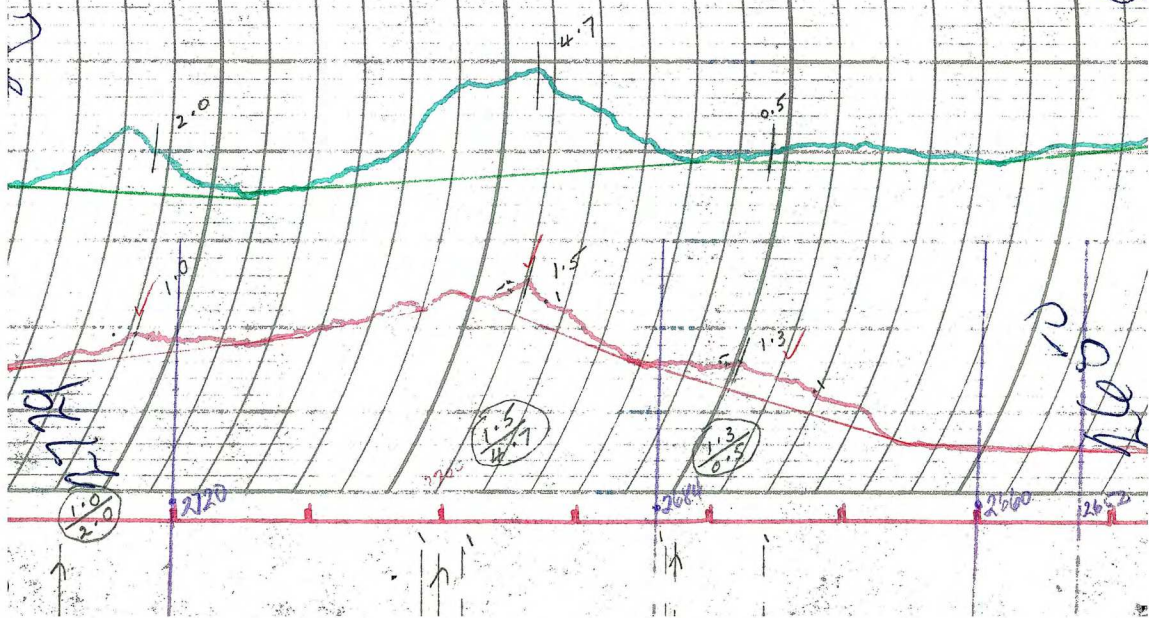
3452

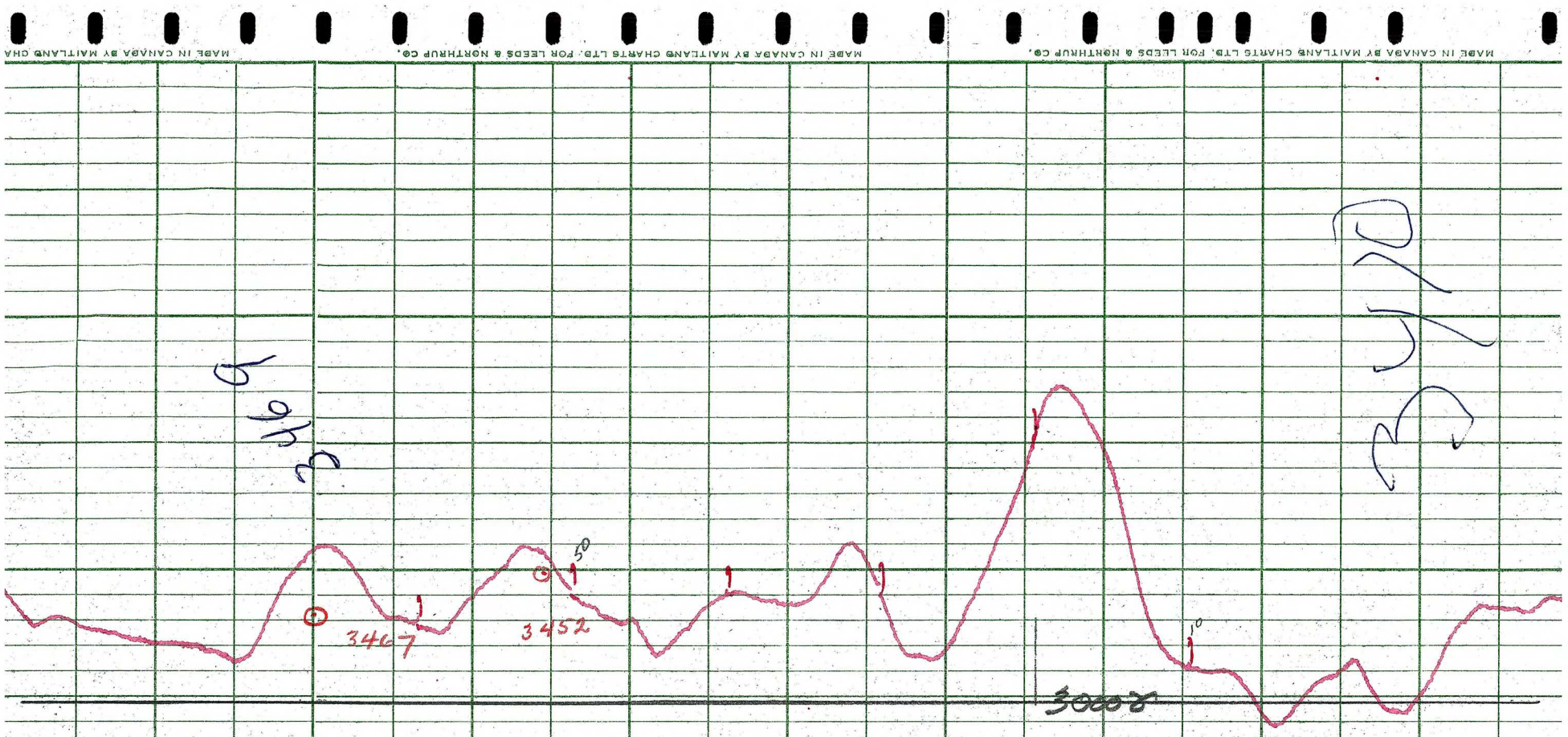
1.6/3.3

1.2/2.0

LOCKWOOD SURVEY CORP., LTD.
ELECTROMAGNETOMETER PROFILES.

Job No. *F-3174* Flight No. *6*
Date Flown *SEPT. 4/50* Aircraft *M-44* Line No. *26-S*
Sensitivity, In Phase *104 T.A.F.S.* Out of Phase *104 T.A.F.S.*
Flying Height *200'* Bird Height *150'*
Tape Speed *3" P.M.*





Handwritten notes in blue ink:

↑

↓

↑

↓

↑

↓

↑

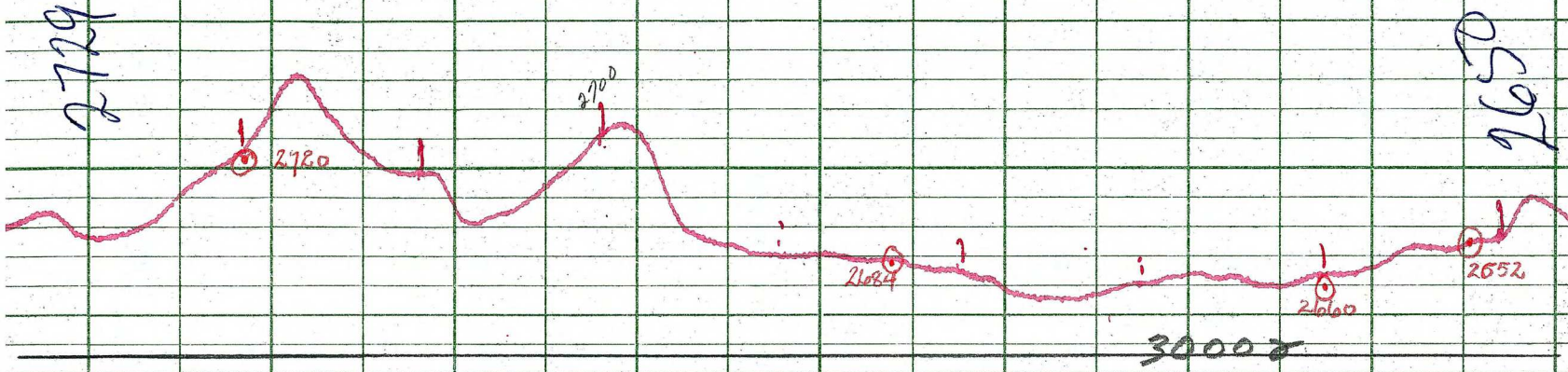
↓

Handwritten notes in blue ink:

10/10/65

10/10/65

LOCKWOOD SURVEY CORP., LTD.
GULF MK III AIRBORNE MAGNETOMETER PROFILE
 Job No. J-3174 Flight No. 6
 Date Flown SEPT. 4/65 Aircraft MAL Line No. 96-5
 Sensitivity Full Scale 1200 G Steps 1000 G
 Height Flown 200' Tape Speed 5 RPM



41 TD
 29750
 2729
 2780
 2700
 2684
 2600
 2652

LOCKWOOD SURVEY CORP., LTD.
GULF MK 111 AIRBORNE MAGNETOMETER PROFILE
 Job No. J-3174 ... Flight No. 6
 Date Flown SEPT. 1/65 Aircraft Line No. 94-5
 Sensitivity Full Scale 1.200 Steps 1000
 Height Flown 200' ... Tape Speed 4" PM