

LOCKWOOD SURVEY CORPORATION LIMITED

CONTRACT # 3174
FLIGHT # 6
DATE FLOWN SEPT-4-65
AIRCRAFT CF-MLL
FLYING HEIGHT 200'

PROFILES
GULF MAGNETOMETER Mk III 4 /MINUTE
SENSITIVITY 1200γ
APN-1 RADIO ALTIMETER _____ /MINUTE
SENSITIVITY _____

LINE No. 97-4.

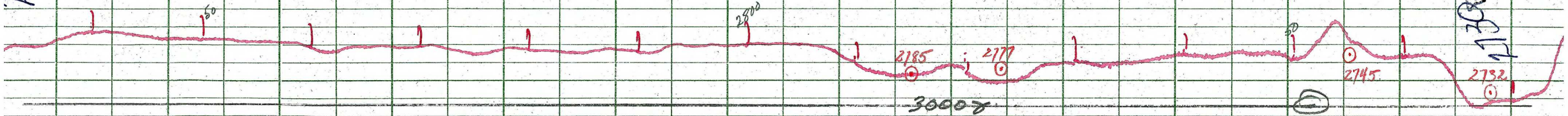
017297

LOCKWOOD SURVEY CORP., LTD.
ELECTROMAGNETOMETER PROFILES.

Job No. Flight No.
Date Flown Aircraft Line No.
Sensitivity, In Phase Out of Phase
Flying Height Bird Height
Tape Speed

10007

10007



LOCKWOOD SURVEY CORP.: LTD.
GULF MK 111 AIRBORNE MAGNETOMETER PROFILE
 Job No. J-2174 Flight No. 6
 Date Flown SEPT. 4/65 Aircraft. M44 Line No. 77-N
 Sensitivity Full Scale 1200γ Steps 1000γ
 Height Flown 200' Tape Speed 4" PM

2500

2250

2000

1750

1500

1250

1000

750

500

250

0

2730

2725

2720

2715

2710

2705

2700

2695

2690

2685

2680

2675

2670

2665

2660

2655

2650

2645

2640

2635

2630

2625

2620

2615

2610

2605

2600

2595

2590

2585

2580

2575

2570

2565

2560

2555

2550

2545

2540

2535

2530

2525

2520

2515

2510

2505

2500

2495

2490

2485

2480

2475

2470

2465

2460

2455

2450

2445

2440

2435

2430

2425

2420

2415

2410

2405

2400

2395

2390

2385

2380

2375

2370

2365

2360

2355

2350

2345

2340

2335

2330

2325

2320

2315

2310

2305

2300

2295

2290

2285

2280

2275

2270

2265

2260

2255

2250

2245

2240

2235

2230

2225

2220

2215

2210

2205

2200

2195

2190

2185

2180

2175

2170

2165

2160

2155

2150

2145

2140

2135

2130

2125

2120

2115

2110

2105

2100

2095

2090

2085

2080

2075

2070

2065

2060

2055

2050

2045

2040

2035

2030

2025

2020

2015

2010

2005

2000

1995

1990

1985

1980

1975

1970

1965

1960

1955

1950

1945

1940

1935

1930

1925

1920

1915

1910

1905

1900

1895

1890

1885

1880

1875

1870

1865

1860

1855

1850

1845

1840

1835

1830

1825

1820

1815

1810

1805

1800

1795

1790

1785

1780

1775

1770

1765

1760

1755

1750

1745

1740

1735

1730

1725

1720

1715

1710

1705

1700

1695

1690

1685

1680

1675

1670

1665

1660

1655

1650

1645

1640

1635

1630

1625

1620

1615

1610

1605

1600

1595

1590

1585

1580

1575

1570

1565

1560

1555

1550

1545

1540

1535

1530

1525

1520

1515

1510

1505

1500

1495

1490

1485

1480

1475

1470

1465

1460

1455

1450

1445

1440

1435

1430

1425

1420

1415

1410

1405

1400

1395

1390

1385

1380

1375

1370

1365

1360

1355

1350

1345

1340

1335

1330

1325

1320

1315

1310

1305

1300

1295

1290

1285

1280

1275

1270

1265

1260

1255

1250

1245

1240

1235

1230

1225

1220

1215

1210

1205

1200

1195

1190

1185

1180

1175

1170

1165

1160

1155

1150

1145

1140

1135

1130

1125

1120

1115

1110

1105

1100

1095

1090

1085

1080

1075

1070

1065

1060

1055

1050

1045

1040

1035

1030

1025

1020

1015

1010

1005

1000

995

990

985

980

975

970

965

960

955

950

945

940

935

930

925

920

915

910

905

900

895

890

885

880

875

870

865

860

855

850

845

840

835

830

825

820

815

810

805

800

795

790

785

780

775

770

765

760

755

750

745

740

735

730

725

720

715

710

705

700

695

690

685

680

675

670

665

660

655

650

645

640

635

630

625

620

615

610

605

600

595

590

585

580

575

570

565

560

555

550

545

540

535

530

525

520

515

510

505

500

495

490

485

480

475

470

465

460

455

450

445

440

435

430

425

420

415

410

405

400

395

390

385

380

375

370

365

360

355

350

345

340

335

330

325

320

315

310

305

300

295

290

285

280

275

270

265

260

255

250

245

240

235

230

225

220

215

210

205

200

195

190

185

180

175

170

165

160

155

150

145

140

135

130

125

120

115

110

105

100

95

90

85

80

75

70

65

60

55

50

45

40

35

30

25

20

15

10

5

0

-5

-10

-15

-20

-25

-30

-35

-40

-45

-50

-55

-60

-65

-70

-75

-80

-85

-90

-95

-100

-105

-110

-115

-120

-125

-130

-135

-140

-145

-150

-155

-160

-165

-170

-175

-180

-185

-190

-195

-200

-205

-210

-215

-220

-225

-230

-235

-240

-245

-250

-255

-260

-265

-270

-275

-280

-285

-290

-295

-300

-305

-310

-315

-320

-325

-330

-335

-340

-345

-350

-355

-360

-365

-370

-375

-380

-385

-390

-395

-400

-405

-410

-415

-420

-425

-430

-435

-440

-445

-450

-455

-460

-465

-470

-475

-480

-485

-490

-495

-500

-505

-510

-515

-520

-525

-530

-535

-540

-545

-550

-555

-560

-565

-570

-575

-580

-585

-590

-595

-600

-605

-610

-615

-620

-625

-630

-635

-640

-645

-650

-655

-660

-665

-670

-675

-680

-685

-690

-695

-700

-705

-710

-715

-720

-725

-730

-735

-740

-745

-750

-755

-760

-765

-770

-775

-780

-785

-790

-795

-800

-805

-810

-815

-820

-825

-830

-835

-840

-845

-850

-855

-860

-865

-870

-875

-880

-885

-890

-895

-900

-905

-910

-915

-920

-925

-930

-935

-940

-945

-950

-955

-960

-965

-970

-975

-980

-985

-990

-995

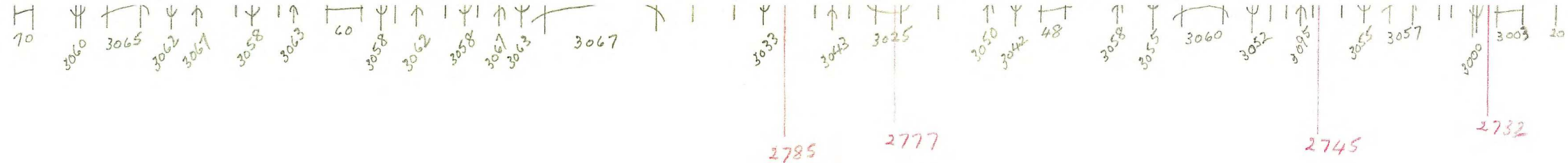
-1000

LOCKWOOD SURVEY CORP., LTD.
ELECTROMAGNETOMETER PROFILES.

Job No. *J-3174* Flight No. *6*
 Date Flown *SEPT. 1, 1950* Aircraft *MAL* Line No. *99-N*
 Sensitivity, In Phase *0.4% F.S.* Out of Phase *0.4% F.S.*
 Flying Height *200'* Bird Height *150'*
 Tape Speed *3" PM*

Handwritten notes and scribbles in the upper left quadrant of the grid.

</



G-3174
 T-97-N
 SEPT-4-65
 CF-MLL
 FLIGHT-6

MLL