

LOCKWOOD SURVEY CORPORATION LIMITED

CONTRACT # 3174
FLIGHT # 6
DATE FLOWN SEPT-14-65
AIRCRAFT CP-MAL
FLYING HEIGHT 200'

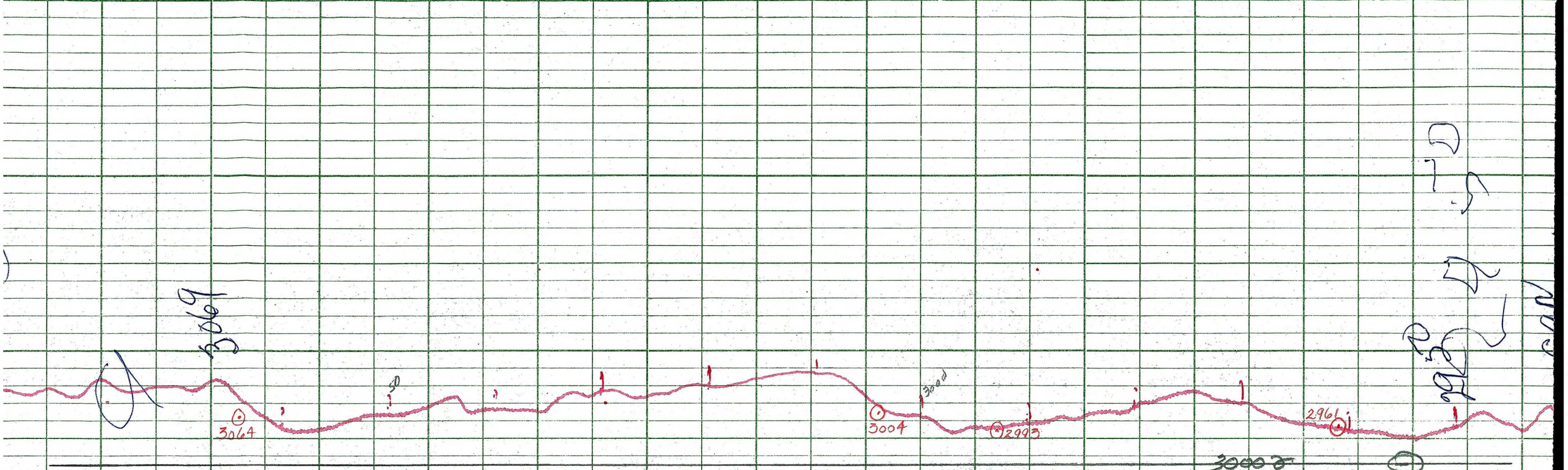
PROFILES
GULF MAGNETOMETER Mk III 4 /MINUTE
SENSITIVITY 1200x
APN-1 RADIO ALTIMETER /MINUTE
SENSITIVITY

LINE No. 99-N

017299

LOCKWOOD SURVEY CORP., LTD.
ELECTROMAGNETOMETER PROFILES.

Job No..... Flight No.....
Date Flown..... Aircraft..... Line No.....
Sensitivity, In Phase..... Out of Phase.....
Flying Height..... Bird Height.....
Tape Speed.....



7

3069

LOCKWOOD SURVEY CORP., LTD.
GULF MK 111 AIRBORNE MAGNETOMETER PROFILE
 Job No. J-3174..... Flight No. 6.....
 Date Flown SEPT. 4, 65 Aircraft M11..... Line No. 72-N.....
 Sensitivity Full Scale 1200 γ..... Steps 10.00 γ.....
 Height Flown 2000'..... Tape Speed 4" / 1.5".....

2500

LOCKWOOD SURVEY CORR., LTD.
ELECTROMAGNETOMETER PROFILES

Job No. J-3174 2000 Flight No. 6
Date Flown SEPT. 4/4 Aircraft M.L.L. Line No. 79-A1
Sensitivity In Phase 0.4% FS Out of Phase 0.4% FS
Flying Height 200' Bird Height 150'
Tape Speed 3" / 1500

Handwritten scribbles

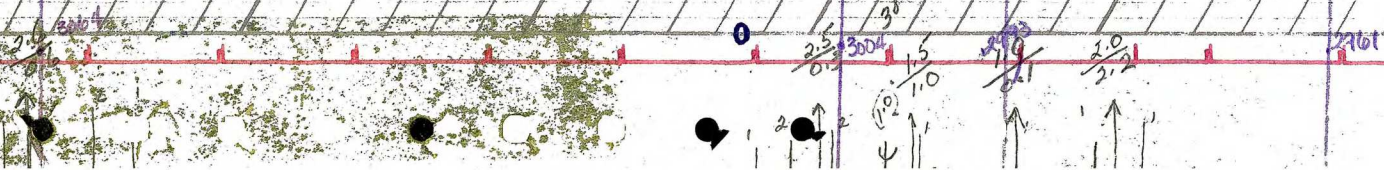
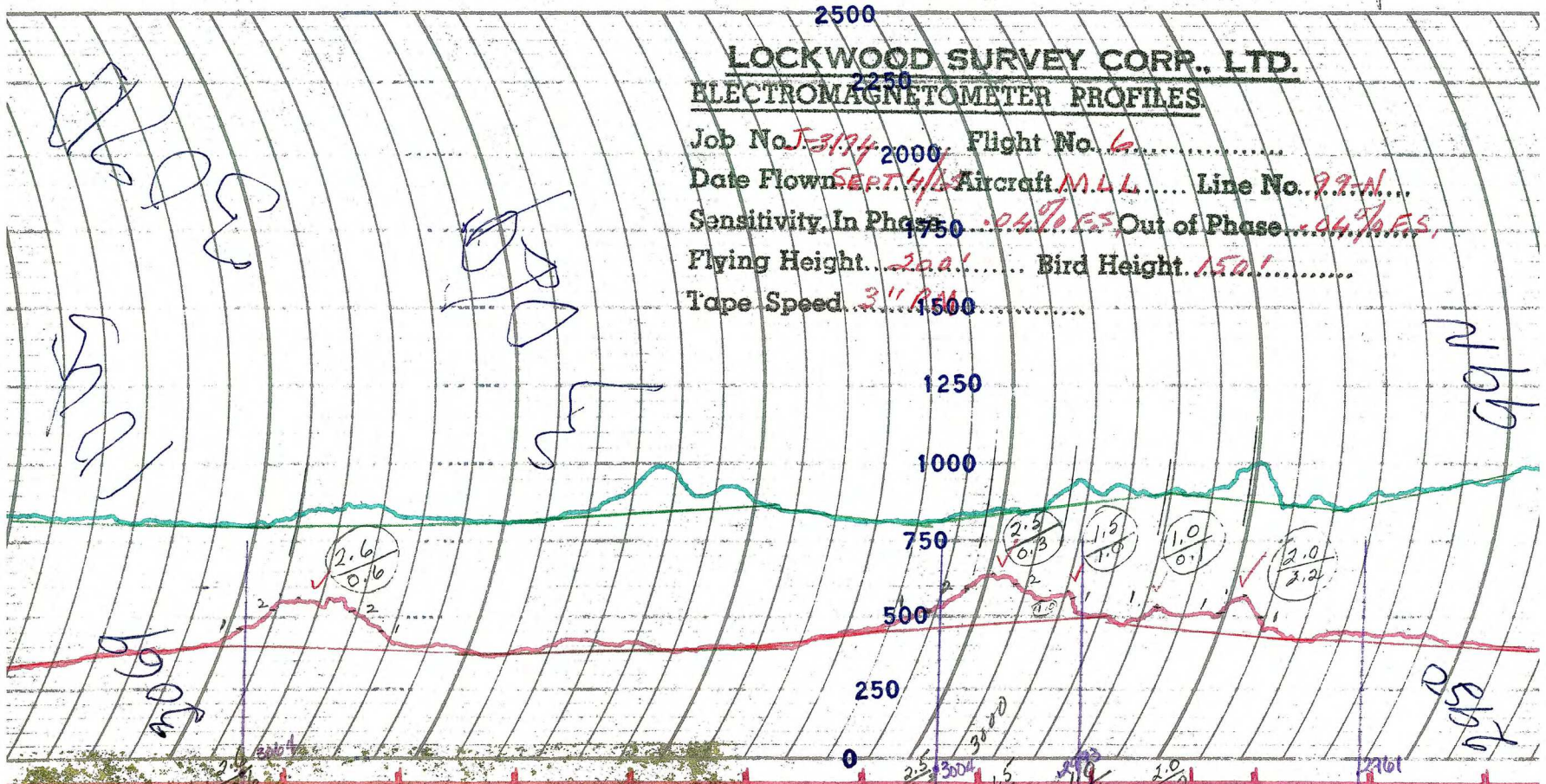
Handwritten scribbles

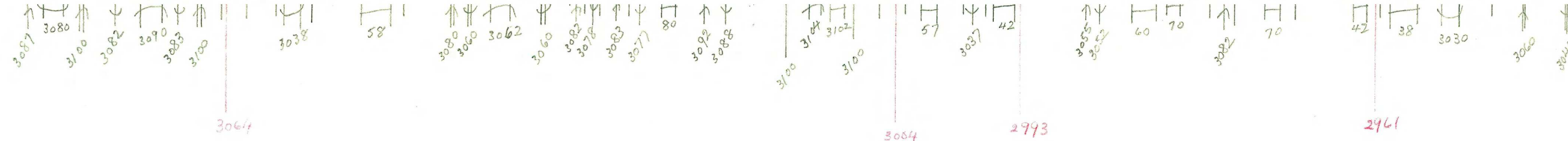
Handwritten scribbles

Handwritten scribbles

Handwritten scribbles

Handwritten scribbles





G-3174
 T. 99-N.
 SEPT. 4-65
 CF-MLL
 FLIGHT-6

ALB.