

LOCKWOOD SURVEY CORPORATION LIMITED

CONTRACT # G-3174
FLIGHT # 6
DATE FLOWN SEPT 4/65
AIRCRAFT MLL
FLYING HEIGHT 200'

PROFILES
GULF MAGNETOMETER Mk III 4"/MINUTE
SENSITIVITY 1200
APN-1 RADIO ALTIMETER /MINUTE
SENSITIVITY

LINE No. 100-S'

017300

LOCKWOOD SURVEY CORP., LTD.
ELECTROMAGNETOMETER PROFILES.

Job No..... Flight No.....
Date Flown..... Aircraft..... Line No.....
Sensitivity, In Phase..... Out of Phase.....
Flying Height..... Bird Height.....
Tape Speed.....

3174
EAS

3070

1607
1505

3163
312.6
3113
3100
3081

3000

LOCKWOOD SURVEY CORP., LTD.
GULF MK 111 AIRBORNE MAGNETOMETER PROFILE
 Job No. J-2174..... Flight No. 6.....
 Date Flown SEPT. 4/65 Aircraft MLT..... Line No. 100-5.....
 Sensitivity Full Scale 1200γ..... Steps 1000γ.....
 Height Flown 200'..... Tape Speed 4' PM.....

2500

LOCKWOOD SURVEY CORP., LTD.
ELECTROMAGNETOMETER PROFILES

Job No. J-3174 Flight No. 6 2000

Date Flown SEPT. 4/68 Aircraft MAL Line No. 1003

Sensitivity, In Phase 70 F.S. Out of Phase 50 04 ES

Flying Height 200' Bird Height 150'

Tape Speed 34 PM 1500

1250

1000

750

500

250

0

500
100

End of Line 3179

CHART DRIVE MALFUNCTION
NO INTERCEPTS PAST
3115

2.8
0.0

3100

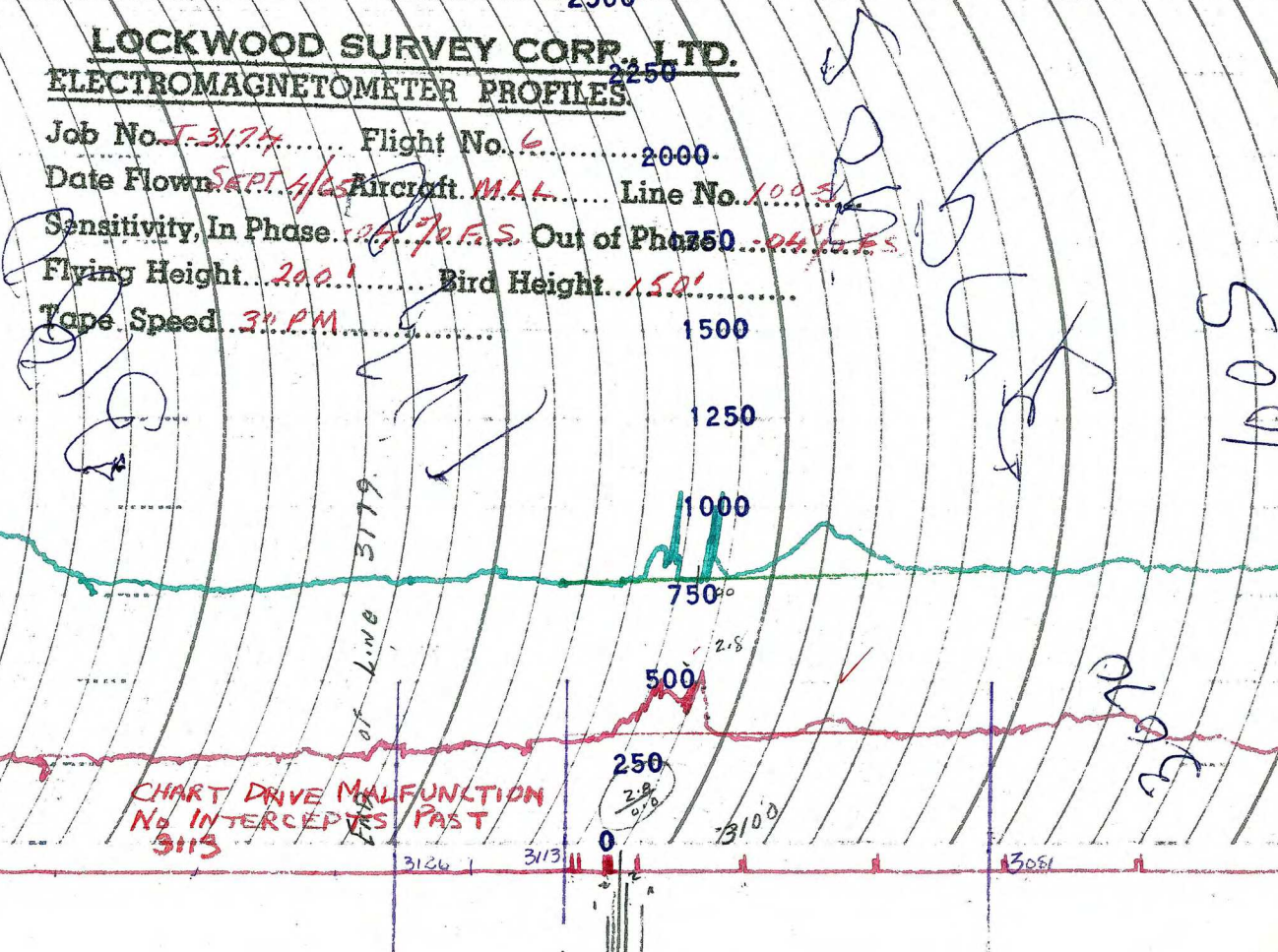
3165

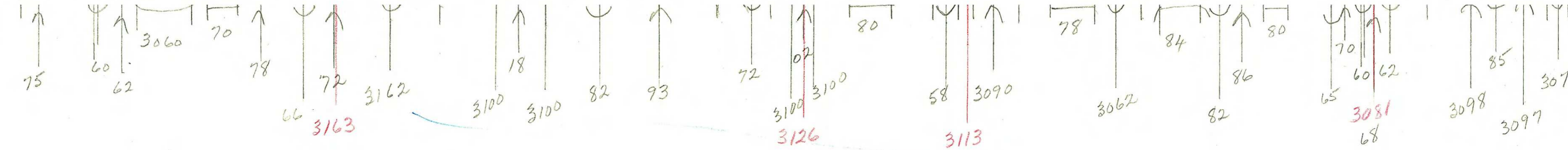
3126

3113

3081

DATE





G-3174
 T-100-S
 SEPT 4/65
 FLT 6

J.B.