

LOCKWOOD SURVEY CORPORATION LIMITED

CONTRACT # G-3194
FLIGHT # 6
DATE FLOWN SEPT 4/65
AIRCRAFT M44
FLYING HEIGHT 200'

PROFILES
GULF MAGNETOMETER Mk III 4"/MINUTE
SENSITIVITY 1200
APN-1 RADIO ALTIMETER /MINUTE
SENSITIVITY

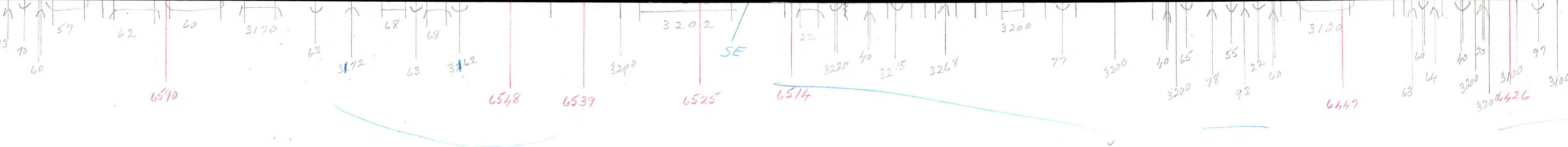
LINE No. 224-5

017303

LOCKWOOD SURVEY CORP., LTD.
ELECTROMAGNETOMETER PROFILES.

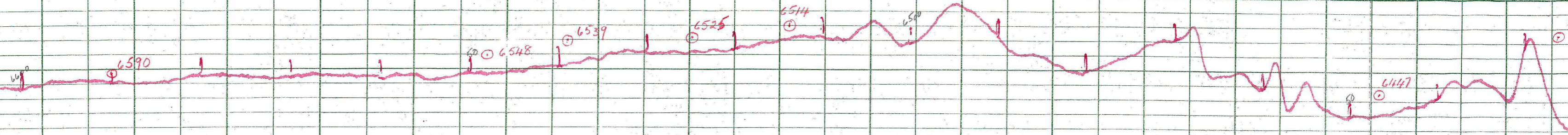
Job No..... Flight No.....
Date Flown..... Aircraft..... Line No.....
Sensitivity, In Phase..... Out of Phase.....
Flying Height..... Bird Height.....
Tape Speed.....

G-3174
T-224-S
SEPT 4/65
FLT 6



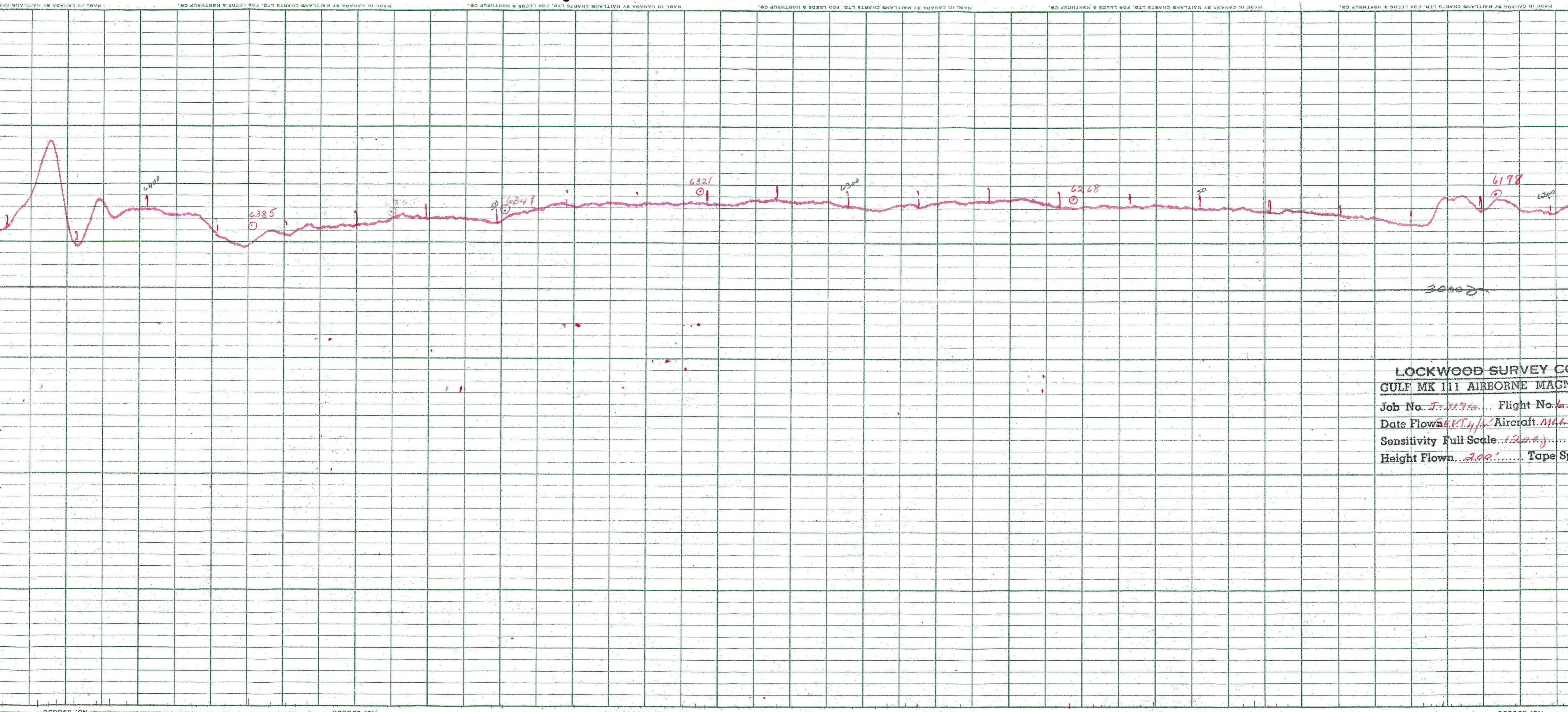
6609

900



3000

LOCKWOOD SURVEY CORP., LTD.
GULF MK III AIRBORNE MAGNETOMETER PROFILE
 Job No. J-3124 Flight No. 6
 Date Flown SEPT 4/65 Aircraft M11 Line No. 224-5
 Sensitivity Full Scale 1200 Steps 100
 Height Flown 200' Tape Speed 1.5" PM



LOCKWOOD SURVEY CO.
GULF MK III AIRBORNE MAGNETOMETER
Job No. J-3174 Flight No. 6
Date Flown SEPT. 4/65 Aircraft MAG.
Sensitivity Full Scale 1200 G.
Height Flown 200' Tape Sp.

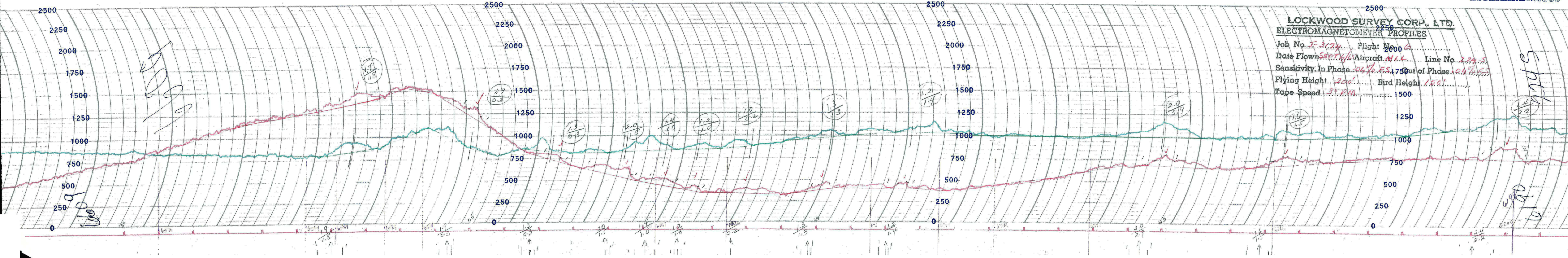
MADE IN U.S.A.

ESTERLINE ANGUS

INDIANAPOLIS, IND., U.S.A.

E.S.

ESTERLINE ANGUS



LOCKWOOD SURVEY CORP., LTD.
ELECTROMAGNETOMETER PROFILES.

Job No. *F-3174* Flight No. *2600*
 Date Flown *SEPT. 14/46* Aircraft *M.I.X.* Line No. *294.5*
 Sensitivity, In Phase *0.4% F.S.* 1750 Out of Phase *1.0% F.S.*
 Flying Height *200'* Bird Height *150'*
 Tape Speed *3" PM*

SHELL

6198
6209