

LOCKWOOD SURVEY CORPORATION LIMITED

CONTRACT # 3.174
FLIGHT # 6
DATE FLOWN SEPT. -1-65
AIRCRAFT CF-M44
FLYING HEIGHT 200'

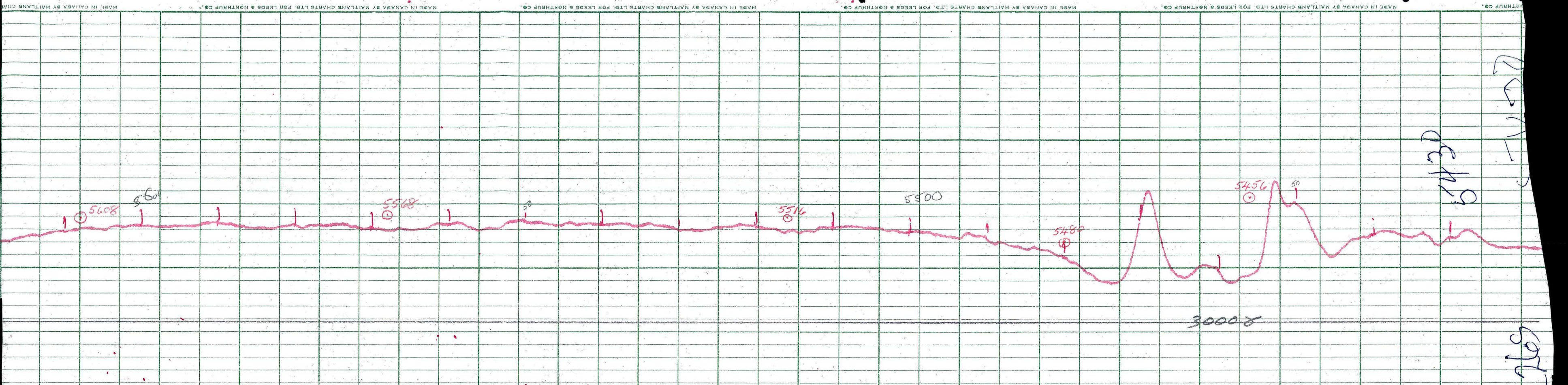
PROFILES
GULF MAGNETOMETER Mk III 4 /MINUTE
SENSITIVITY 1200y
APN-1 RADIO ALTIMETER _____ /MINUTE
SENSITIVITY _____

LINE No. 226-8

017305

LOCKWOOD SURVEY CORP., LTD.
ELECTROMAGNETOMETRY PROFILES.

Job No..... Flight No.....
Date Flown..... Aircraft..... Line No.....
Sensitivity, In Phase..... Out of Phase.....
Flying Height..... Bird Height.....
Tape Speed.....

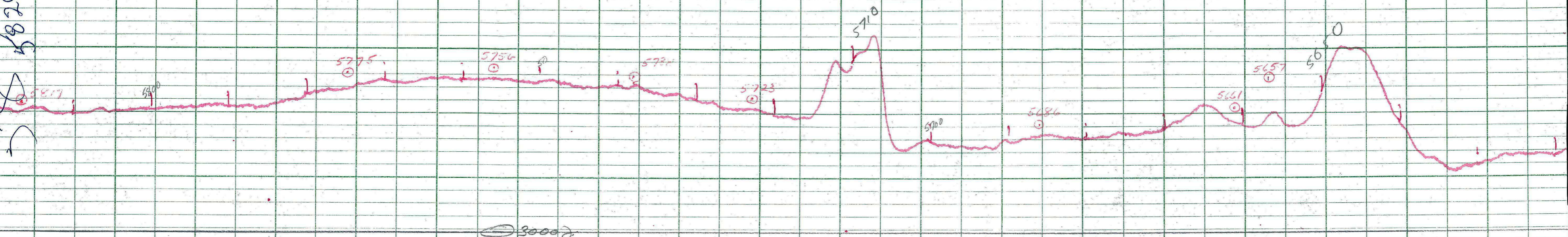


Dec 1965

2765

LOCKWOOD SURVEY CORP., LTD.
GULF MK III AIRBORNE MAGNETOMETER PROFILE
 Job No. J-3174 Flight No. 6
 Date Flown SEPT. 4/65 Aircraft MIA Line No. 276-5
 Sensitivity Full Scale 1000γ Steps 1000γ
 Height Flown 200' Tape Speed 4" PM

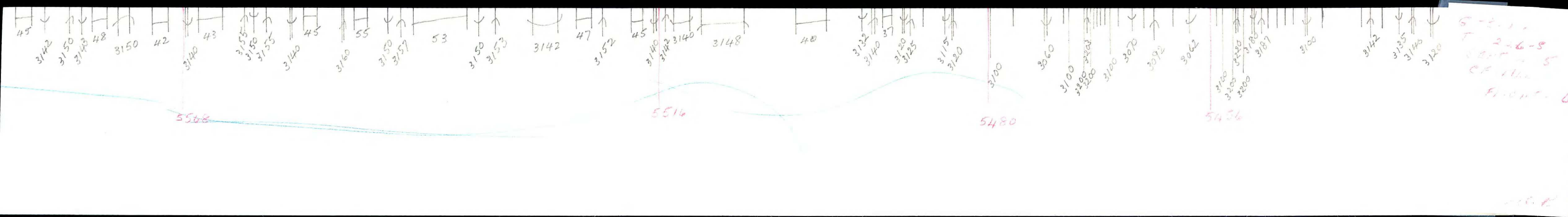
5829
5817
5800



5829
5817
5800

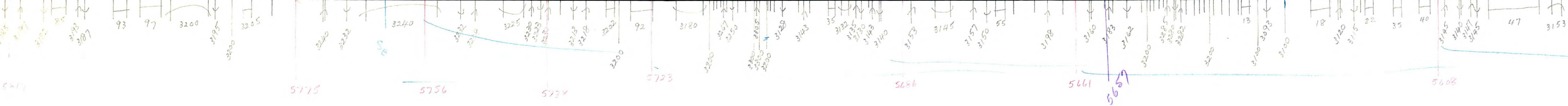
LOCKWOOD SURVEY CORP., LTD.
GULF MK 111 AIRBORNE MAGNETOMETER PROFILE
Job No. I-3174 Flight No. 6
Date Flown SEPT. 6/63 Aircraft M44 Line No. 236-5
Sensitivity Full Scale 120.0γ Steps 100.0γ
Height Flown 200' Tape Speed 1/2" PM

5829
5817
5800

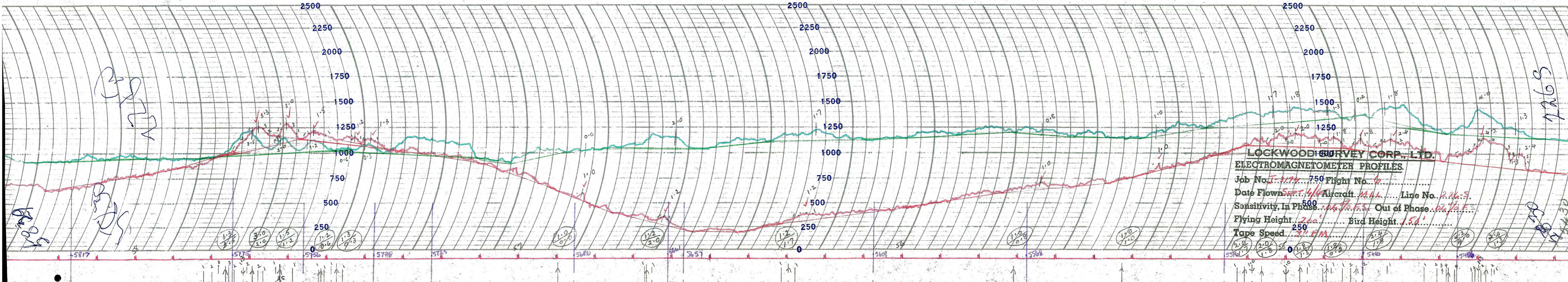


5-2-1
 T-2-6-5
 CP 11.2
 FRONT-6

G. - 3174
T. 226.5
SEPT-6-65
CF-MLL
FLIGHT-6



15



LOCKWOOD SURVEY CORP., LTD.
ELECTROMAGNETOMETER PROFILES.

Job No. J-3174 Flight No. 6
 Date Flown SEPT. 4/44 Aircraft M.H.L. Line No. 276-S
 Sensitivity, In Phase 0.475 Out of Phase 0.745
 Flying Height 500' Bird Height 150'
 Tape Speed 3" PM

Handwritten notes:
 5817
 5775
 5756
 5738
 5725

Handwritten note:
 7265

Handwritten notes:
 5460
 5440
 5420
 5400