

LOCKWOOD SURVEY CORPORATION LIMITED

CONTRACT # 63174
FLIGHT # 6
DATE FLOWN Sept 4/65
AIRCRAFT MLL
FLYING HEIGHT 200

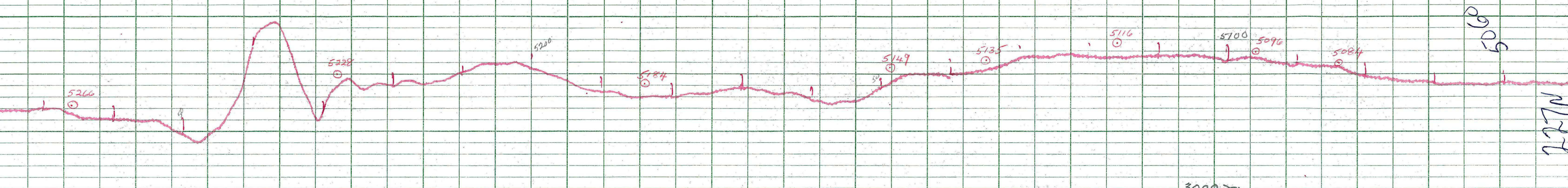
PROFILES
GULF MAGNETOMETER Mk III 4 /MINUTE
SENSITIVITY 1200
APN-1 RADIO ALTIMETER _____ /MINUTE
SENSITIVITY _____

LINE No. 227-N

017306

LOCKWOOD SURVEY CORP., LTD.
ELECTROMAGNETOMETER PROFILES

Job No. _____ Flight No. _____
Date Flown _____ Aircraft _____ Line No. _____
Sensitivity, In Phase _____ Out of Phase _____
Flying Height _____ Bird Height _____
Tape Speed _____



L

3000

5095

227N

LOCKWOOD SURVEY CORP., LTD.
GULF MK III AIRBORNE MAGNETOMETER PROFILE
 Job No. G-3174 Flight No. 4
 Date Flown SEPT. 4/64 Aircraft M4A Line No. 227N
 Sensitivity Full Scale 1200γ Steps 100γ
 Height Flown 2000' Tape Speed 12" PM

5415



LOCKWOOD SURVEY CORP., LTD.

GULF MK 111 AIRBORNE MAGNETOMETER PROFILE

Job No. G-3174 Flight No. 6

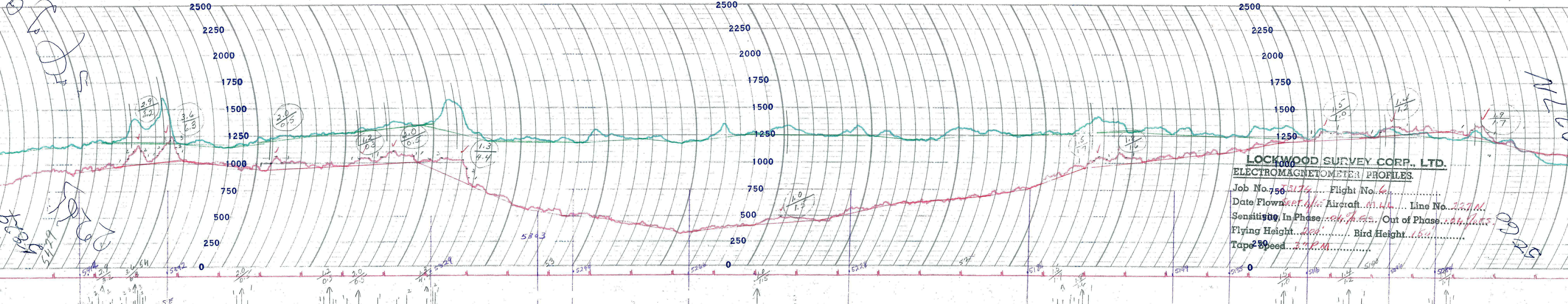
Date Flown SEPT. 4/54 Aircraft M4 Line No. 227-N

Sensitivity Full Scale 1200 γ Steps 100 γ

Height Flown 2000' Tape Speed 4.75 PM

Handwritten notes and scribbles on the left side of the page, including a large 'S' and other illegible marks.

3000



LOCKWOOD SURVEY CORP., LTD.
ELECTROMAGNETOMETER PROFILES.

Job No. 750-3174 Flight No. 6
 Date Flown Sept. 4, 1955 Aircraft M.L.L. Line No. 227M
 Sensitivity 500 In Phase 0.4 J.F.S. Out of Phase 0.4 J.F.S.
 Flying Height 200' Bird Height 150'
 Tape Speed 3" P.M.

Handwritten notes and diagrams on the left side of the chart, including a sketch of a magnetic field and the number '5149'.

COG 150