

LOCKWOOD SURVEY CORPORATION LIMITED

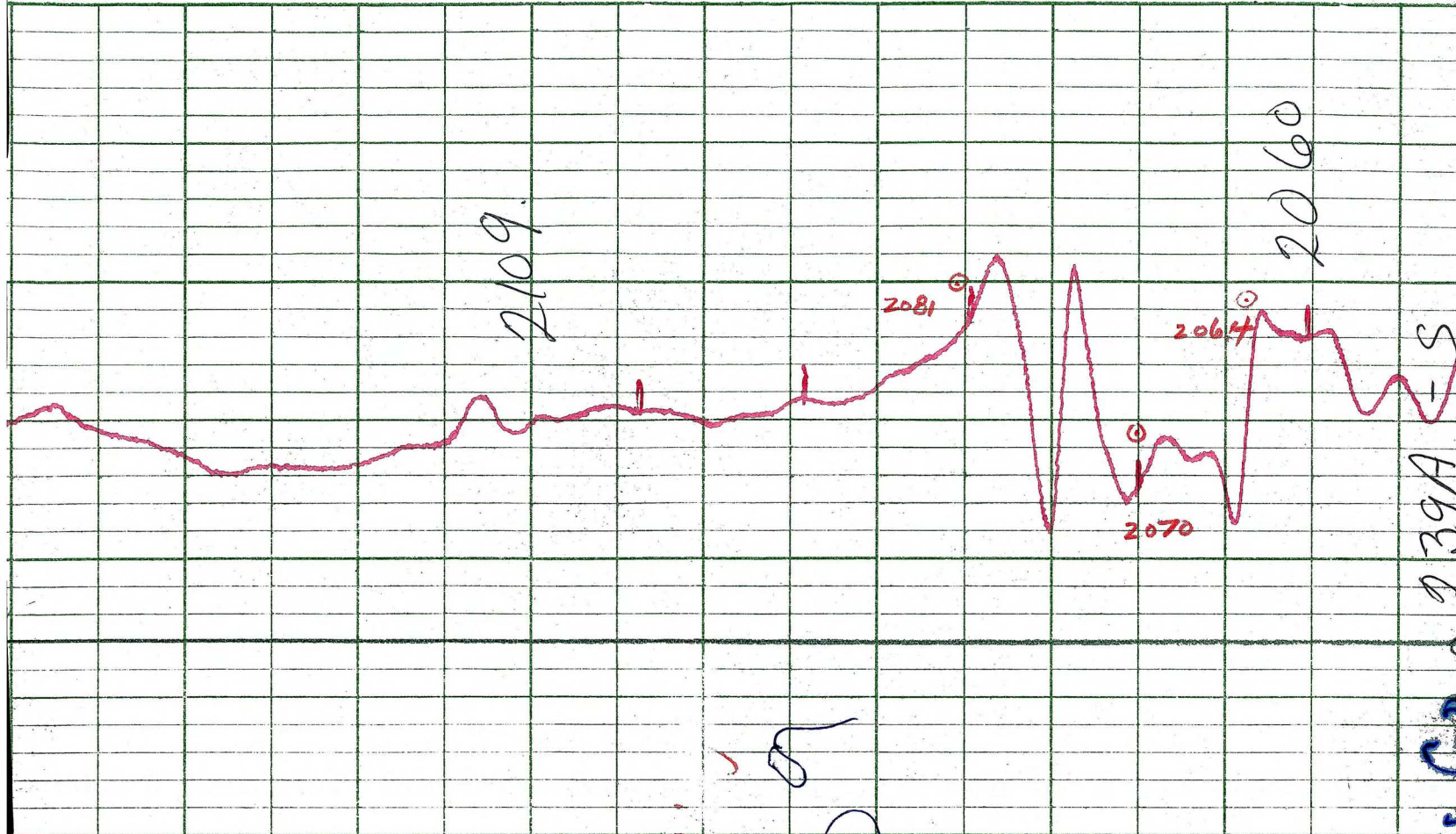
CONTRACT # G 3174
FLIGHT # No. 7
DATE FLOWN Sept 5/65
AIRCRAFT Sm h^h 6
FLYING HEIGHT 200 ft

PROFILES CHART SPEED
GULF MAGNETOMETER Mk III 4 /MINUTE
SENSITIVITY
APN-1 RADIO ALTIMETER...../MINUTE
SENSITIVITY..... 1200 ft

LINE No. 239-8
239A
017318

LOCKWOOD SURVEY CORP., LTD.
ELECTROMAGNETOMETER PROFILES

Job No..... Flight No.....
Date Flown..... Aircraft..... Line No.....
Sensitivity, In Phase..... Out of Phase.....
Flying Height..... Bird Height.....
Tape Speed.....

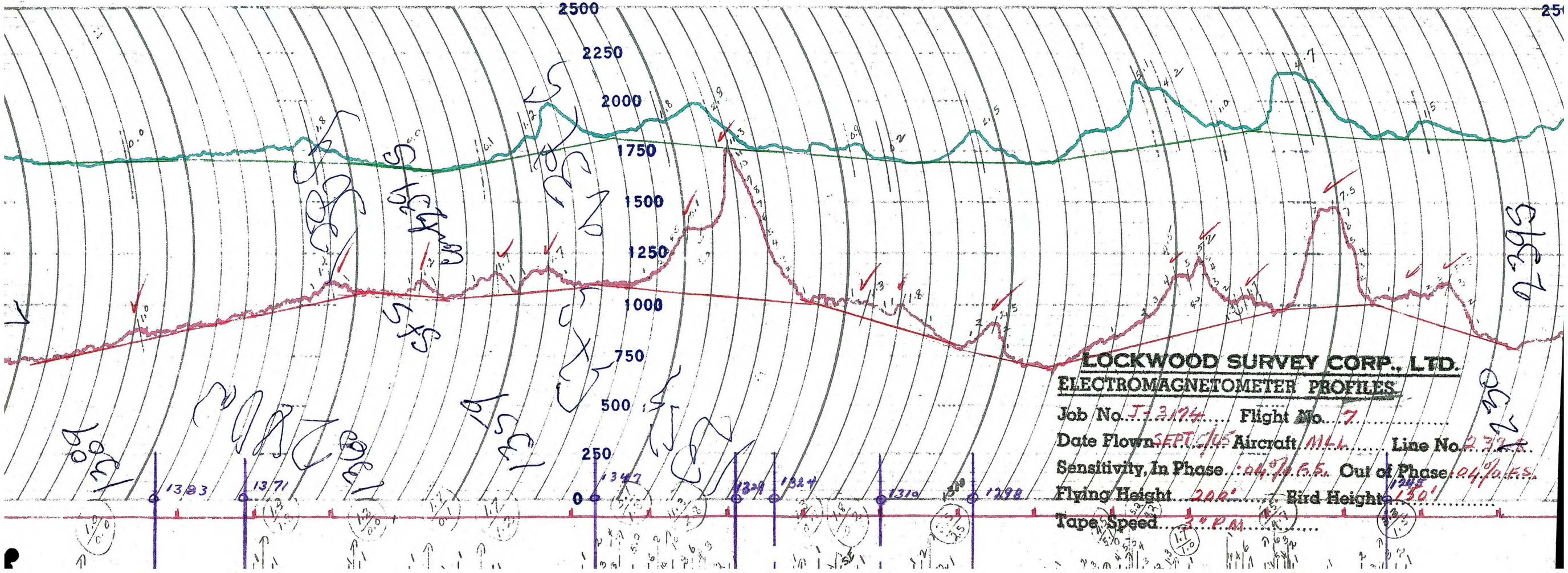


LOCKWOOD SURVEY CORP., LTD.

GULF MK 111 AIRBORNE MAGNETOMETER PROFILE

Job No. 3174 Flight No. 8
 Date Flown SEPT. 6 Aircraft H. 11 Line No. 239A
 Sensitivity Full Scale 1200γ Steps 1000γ
 Height Flown 200' Tape Speed 4" PER MIN

(Handwritten scribbles and notes)



LOCKWOOD SURVEY CORP., LTD.
ELECTROMAGNETOMETER PROFILES

Job No. J-3174 Flight No. 7
 Date Flown SEPT. 7, 45 Aircraft M.L. Line No. 2724
 Sensitivity, In Phase: 0.4% P.S. Out of Phase: 0.4% P.S.
 Flying Height 200' Bird Heights 1345'
 Tape Speed 30 P.M.

1303

1371

250

1347

1329

1324

1310

1298

SHE 10

SHE 10

SHE 10

SHE 10

SHE 10

SHE 10

SHE 10

SHE 10

SHE 10

SHE 10

SHE 10

SHE 10

SHE 10

SHE 10

SHE 10

SHE 10

SHE 10

SHE 10

SHE 10

SHE 10

SHE 10

SHE 10

SHE 10

LOCKWOOD SURVEY CORP. LTD.

MADE IN U.S.A.

ESTERLINE

ELECTROMAGNETOMETER PROFILES

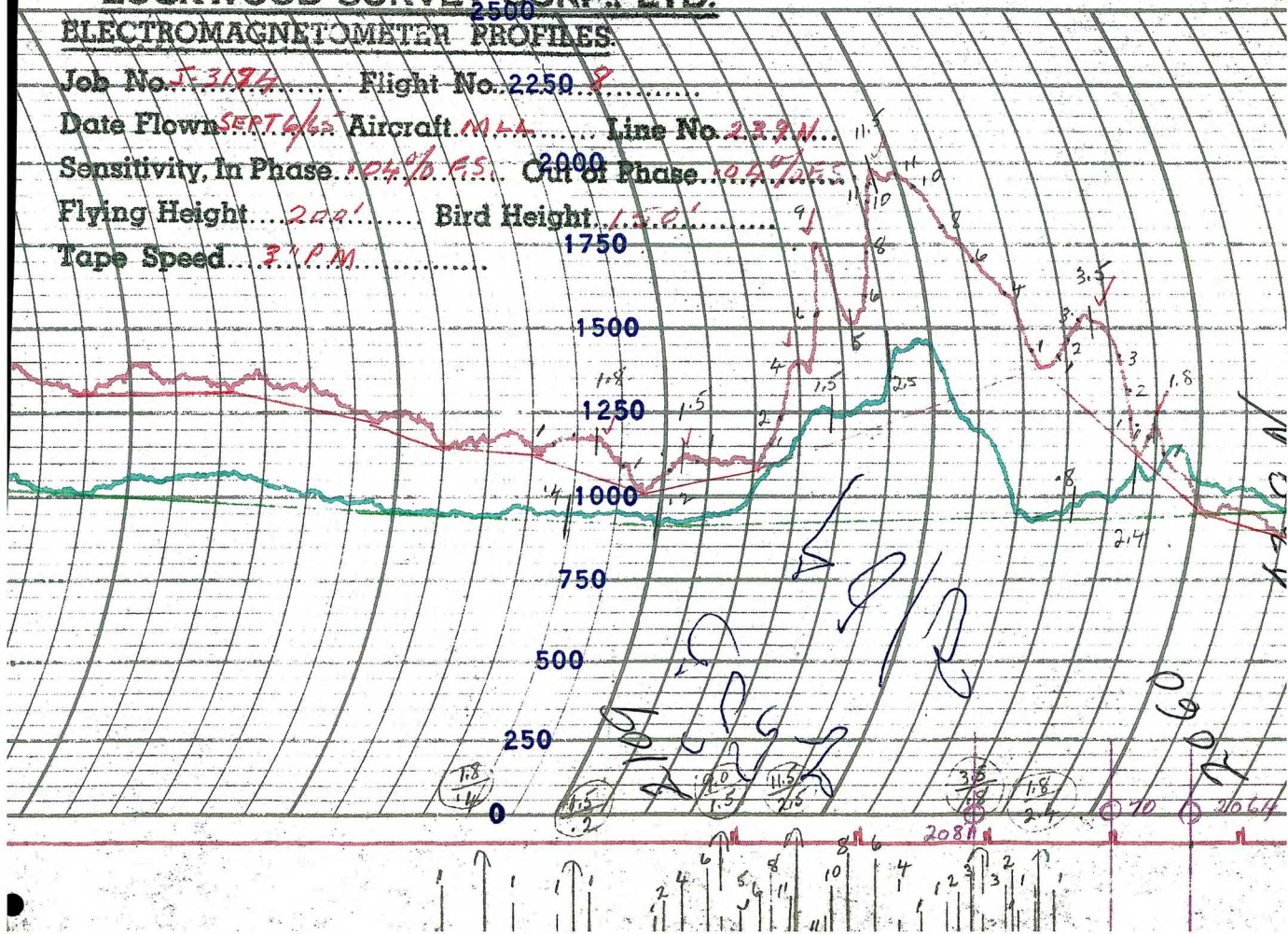
Job No. J-3194 Flight No. 2250

Date Flown SEPT 6/55 Aircraft M.A. Line No. 229W

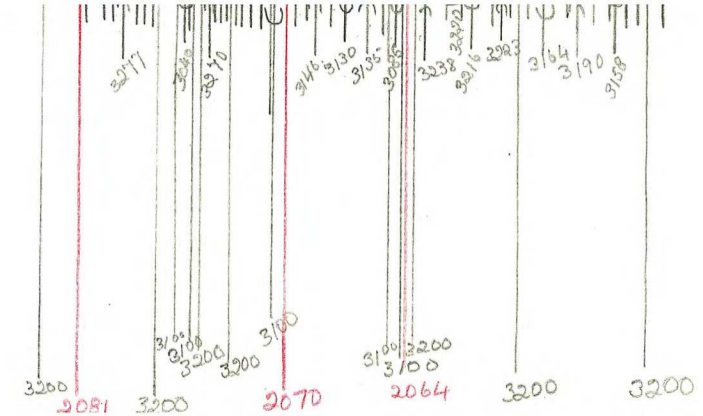
Sensitivity, In Phase 104% P.S. Out of Phase 100% P.S.

Flying Height 200' Bird Height 150'

Tape Speed 31 P.M.

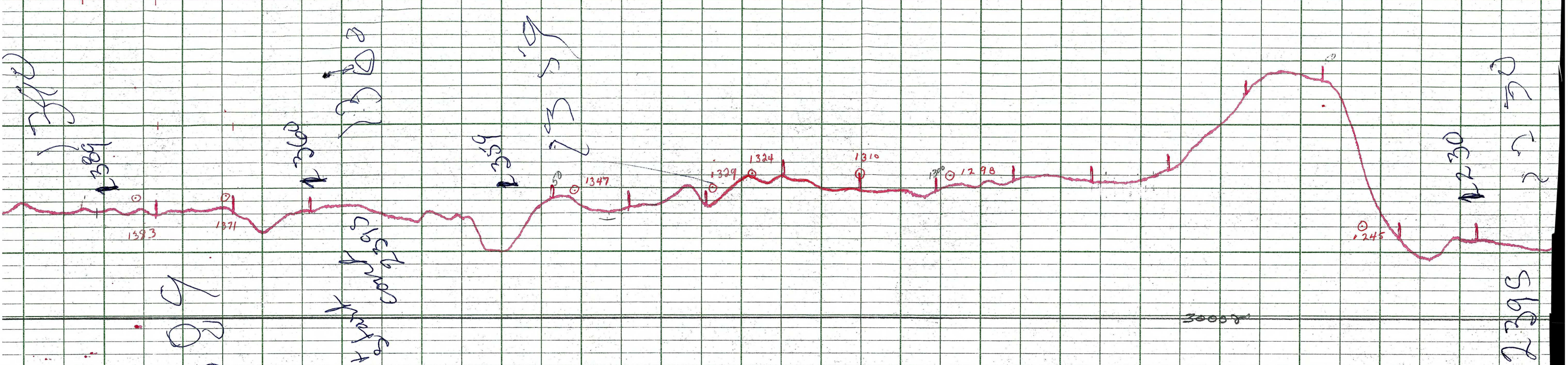


Job - G-3174
Flt - 8
Date - Sept 6/65
L.N. - 239-A.



Job - G-3174
Flt - 8
Date - Sept 6/65
L.N. - 239-A.

A



1389

1389

1371

1371

1393

1347

1324

1310

1298

1245

1245

1245

LOCKWOOD SURVEY CORP., LTD.
GULF MK 111 AIRBORNE MAGNETOMETER PROFILE
 Job No. F-5174 Flight No. 7
 Date Flown DEPT. 5/65 Aircraft M.L.L. Line No. 2395
 Sensitivity Full Scale 1200γ Steps 1000γ
 Height Flown 200 ft. Tape Speed 4" PM