

LOCKWOOD SURVEY CORPORATION LIMITED

CONTRACT # 3174
FLIGHT # 2
DATE FLOWN Aug 30-65
AIRCRAFT MLL
FLYING HEIGHT 200'

PROFILES
GULF MAGNETOMETER Mk III 4 /MINUTE
SENSITIVITY 1200
APN-1 RADIO ALTIMETER _____ /MINUTE
SENSITIVITY _____

LINE No. 17N

017332

LOCKWOOD SURVEY CORP., LTD.
ELECTROMAGNETOMETER PROFILES.

Job No. Flight No.
Date Flown Aircraft Line No.
Sensitivity, In Phase Out of Phase
Flying Height Bird Height
Tape Speed

785

1354

1321

1320

1263

1270
3000

50

1220

1220

1220

1220

Mod
hit to ground

74-3

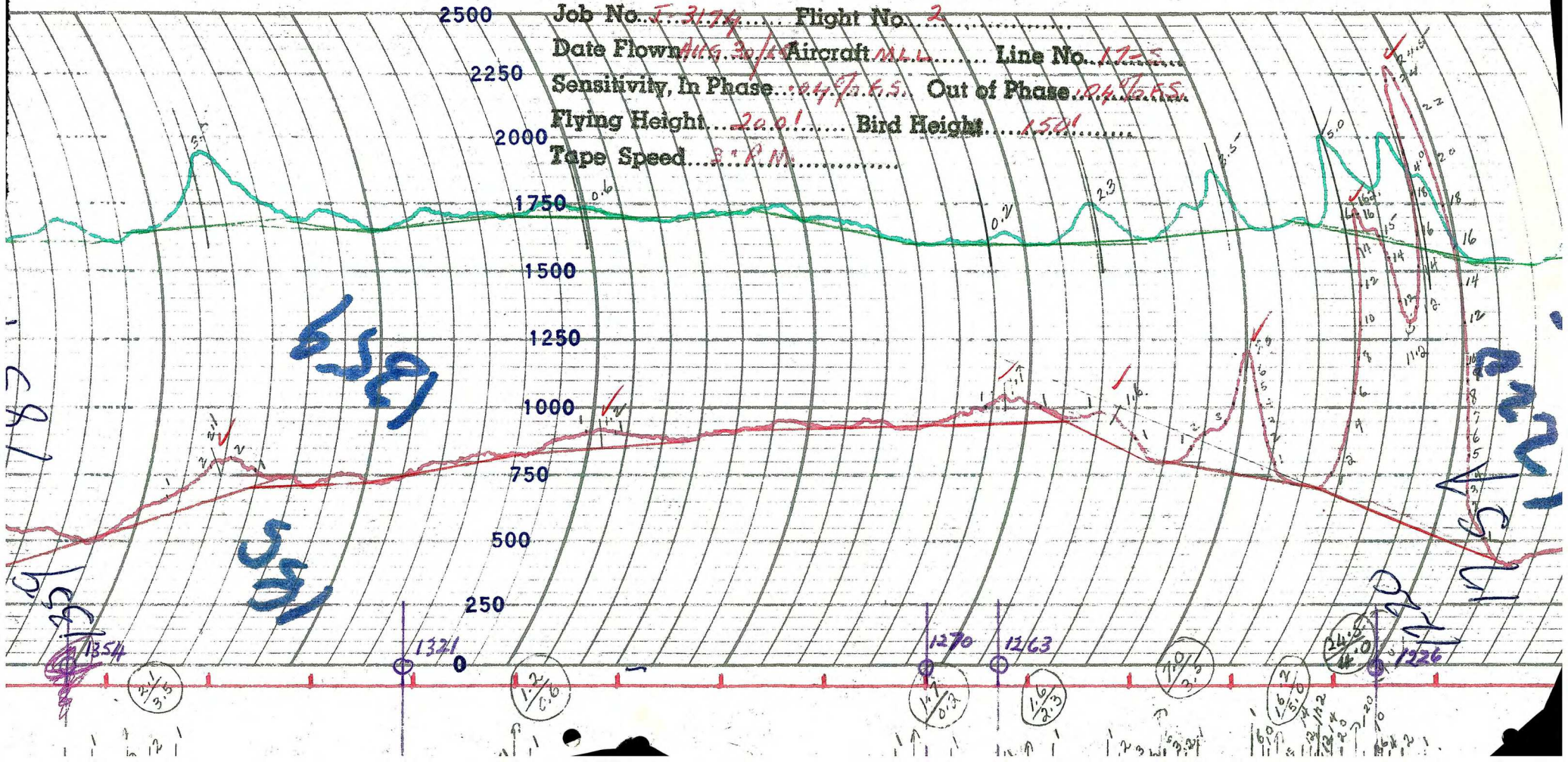
19-1A

LOCKWOOD SURVEY CORP., LTD.
GULF MK 111 AIRBORNE MAGNETOMETER PROFILE
 Job No. F-5174 Flight No. 2
 Date Flown Aug. 30/65 Aircraft M11 Line No. 7.11
 Sensitivity Full Scale 1200γ Steps 1000γ
 Height Flown 200ft Tape Speed 4" PM

LOG (WIND SURVEY) CORP. LTD.
 ELECTROMAGNETOMETER PROF. BERLINE ANGUS

INDIANAPOLIS, IND., U.S.A.

Job No. J-3174 Flight No. 2
 Date Flown Aug. 30/54 Aircraft M.L.L. Line No. 1755
 Sensitivity, In Phase...0.47 G.S. Out of Phase...0.47 G.S.
 Flying Height...200' Bird Height...150'
 Tape Speed...3 P.M.



1381

1354

1354

1354

1354

1321

1270

1263

1226

1226

1226

1226

1226

1226

1226

1354

1354

1354

1354

1354

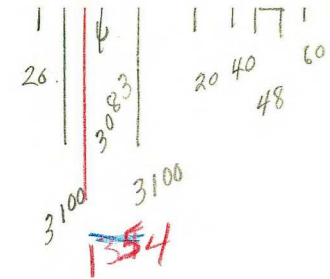
1354

1354

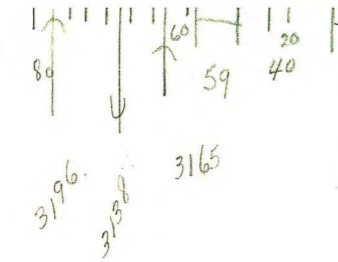
1354

1354

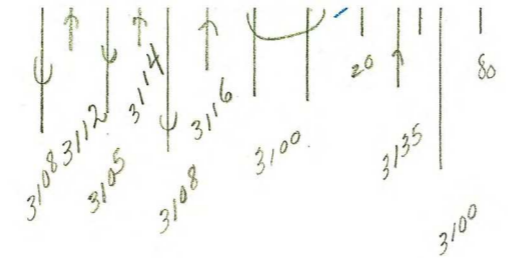
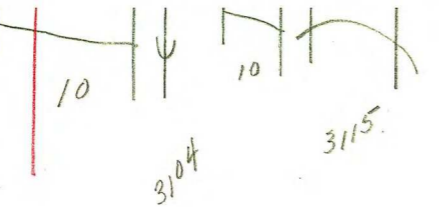
1354



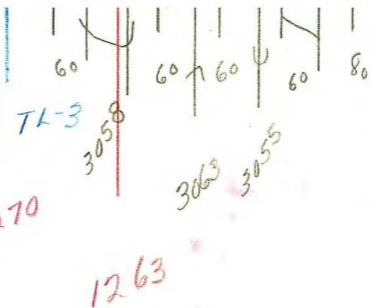
~~1354~~



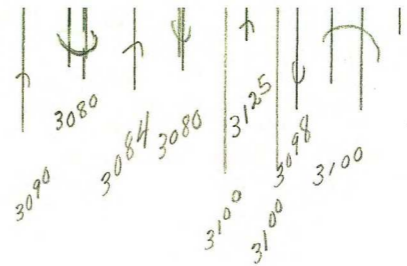
1321



1270



1263



1226

3174
Aug 30-65
T 17N
New Era