

**LOCKWOOD SURVEY CORPORATION LIMITED**

CONTRACT # G 3174  
FLIGHT # 2  
DATE FLOWN Aug 20/65  
AIRCRAFT M.L.L.  
FLYING HEIGHT 200

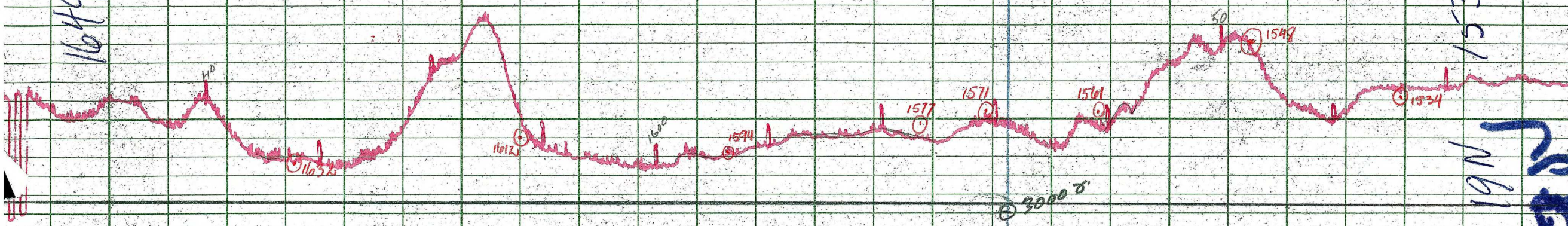
PROFILES  
GULF MAGNETOMETER Mk III 4 /MINUTE  
SENSITIVITY 1200  
APN-1 RADIO ALTIMETER \_\_\_\_\_ /MINUTE  
SENSITIVITY \_\_\_\_\_

LINE No. 19 N  
  
017334

**LOCKWOOD SURVEY CORP., LTD.**  
**ELECTROMAGNETOMETER PROFILES.**

Job No..... Flight No.....  
Date Flown..... Aircraft..... Line No.....  
Sensitivity, In Phase..... Out of Phase.....  
Flying Height..... Bird Height.....  
Tape Speed.....

1649  
16  
16



1530  
19N

**LOCKWOOD SURVEY CORP., LTD.**

**GULF MK 111 AIRBORNE MAGNETOMETER PROFILE**

Job No. J. 3174 Flight No. 2  
 Date Flown Aug. 30/54 Aircraft M.F. Line No. 19-N  
 Sensitivity Full Scale 1200γ Steps 1000γ  
 Height Flown 2000 Tape Speed 5" PM



