

LOCKWOOD SURVEY CORPORATION LIMITED

CONTRACT # G 3174
FLIGHT # 3
DATE FLOWN Aug 31/65
AIRCRAFT MLL
FLYING HEIGHT 200'

PROFILES
GULF MAGNETOMETER Mk III 4"/MINUTE
SENSITIVITY 1200γ
APN-1 RADIO ALTIMETER _____/MINUTE
SENSITIVITY _____

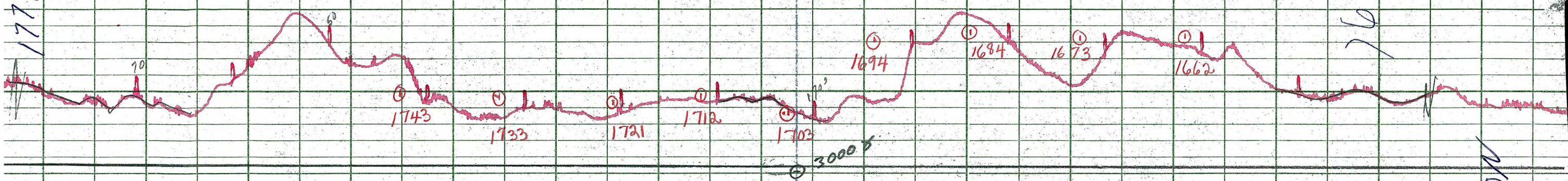
LINE No. 20-N.

017335

LOCKWOOD SURVEY CORP., LTD.
ELECTROMAGNETOMETER PROFILES.

Job No..... Flight No.....
Date Flown..... Aircraft..... Line No.....
Sensitivity, In Phase..... Out of Phase.....
Flying Height..... Bird Height.....
Tape Speed.....

1779
6462



6591
7691

2201

576

72-3

LOCKWOOD SURVEY CORP., LTD.
 GULF MK III AIRBORNE MAGNETOMETER PROFILE
 Job No. J-3174, Flight No. 3
 Date Flown Aug 31/65 Aircraft M.H. Line No. 20-N
 Sensitivity Full Scale 1200 γ Steps 1000 γ
 Height Flown 2000' Tape Speed 4" P.M.

LOCKWOOD SURVEY CORP., LTD.
ELECTROMAGNETOMETER PROFILES.

Job No. F 3177 Flight No. 3

Date Flown Aug. 31, 63 Aircraft M. L. H. Line No. 20N

Sensitivity, In Phase 0.14% F.S. Out of Phase 0.04% F.S.

Flying Height 200' Bird Height 150'

Tape Speed 30 P.M.

2500

2250

2000

1750

1500

1250

1000

750

500

250

$\frac{24.8}{9.4}$

$\frac{12.0}{3.1}$

$\frac{11.5}{0.1}$

$\frac{11.5}{0.3}$

$\frac{11.0}{2.8}$

$\frac{3.0}{2.0}$

$\frac{8.4}{1.1}$

NOT

$\frac{3.4}{2.5}$

$\frac{2.0}{1.2}$

2591

1779

57

1743

1733

1721

1712

1703

1694

1684

1673

1662

1651

$\frac{1.5}{0.1}$

$\frac{1.5}{0.3}$

$\frac{1.0}{2.8}$

$\frac{3.0}{2.0}$

$\frac{2.0}{9.4}$

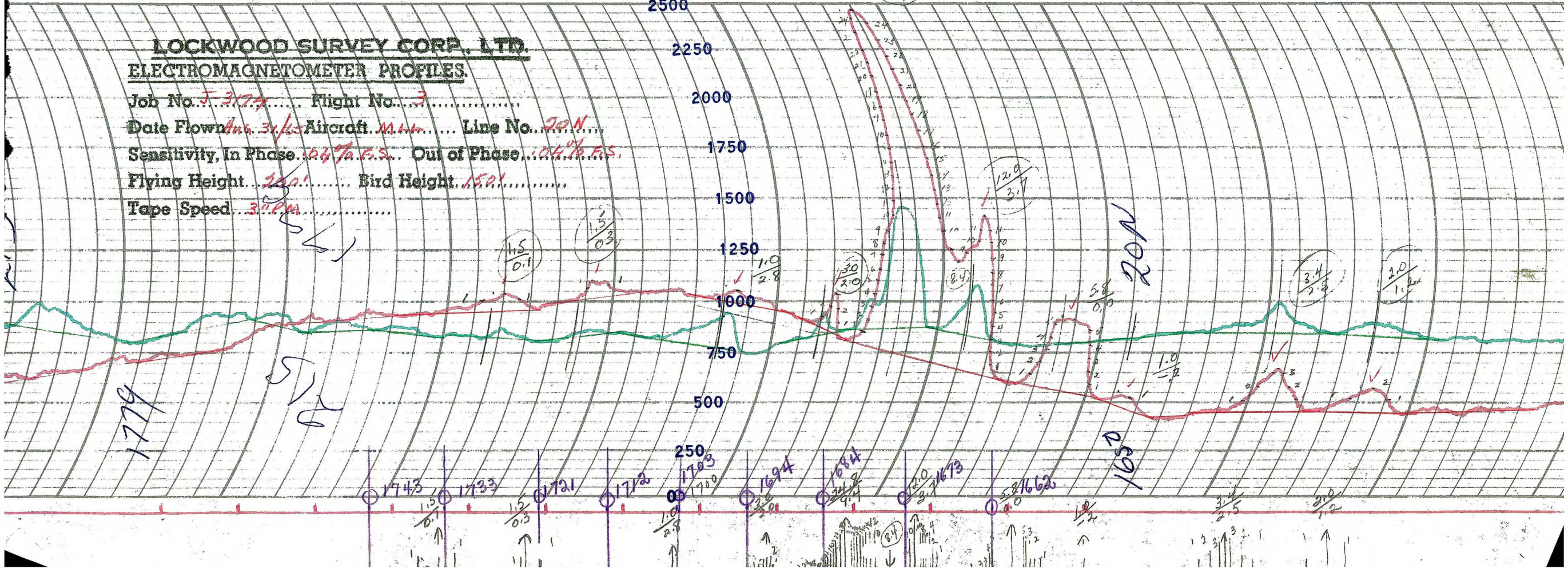
$\frac{2.0}{2.1}$

$\frac{3.2}{1.1}$

$\frac{1.0}{2.1}$

$\frac{3.4}{2.5}$

$\frac{2.0}{1.2}$



JOB NO
FLT.
Aug 31/65-3174
No. 20-N

3100

3076

3083

3070

3085

3072

3078

3060

3100

3186

3120

3135

1743

3079

3082

3059

1733

3080

3067

3058

1721

3082

3078

3085

3079

3085

1703

3073

3086

3080

1694

3100

3150

1684

3189

1673

3100

3162

1662

3130

3141

3100

3082

3094

3080