

LOCKWOOD SURVEY CORPORATION LIMITED

CONTRACT # 3174
FLIGHT # 3
DATE FLOWN AUG. 31-65
AIRCRAFT CF-MLL
FLYING HEIGHT 200'
~~1000~~

PROFILES
GULF MAGNETOMETER Mk III 4/MINUTE
SENSITIVITY 1200γ
APN-1 RADIO ALTIMETER _____/MINUTE
SENSITIVITY _____

LINE No. 24-N

017339

LOCKWOOD SURVEY CORP., LTD.
ELECTROMAGNETOMETER PROFILES.

Job No. Flight No.
Date Flown Aircraft Line No.
Sensitivity, In Phase Out of Phase
Flying Height Bird Height
Tape Speed

S S S

3/100 3/128

3/100 3/103

3/100 3/120

2201 3/100 3/107

3/100 3/090 3/093

2184

TL-3

3/100 3/120 3/090 3/093

3/100 3/125 3/112 3/128

2151

3/100 3/085 3/092 3/095

G. - 3174

T - 24.4

AUG. 31-65

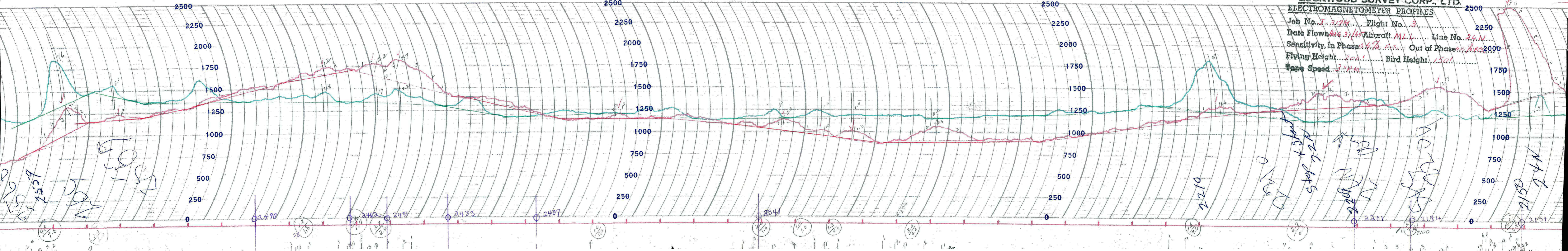
MILL

FLIGHT - 3

A. B.

ELECTROMAGNETIC PROFILES

Job No. J. 3174 Flight No. 3
Date Flown Aug. 3, 1955 Aircraft M.L.L. Line No. 2411
Sensitivity, In Phase 0.4% P.S. Out of Phase 0.8% P.S.
Flying Height 200' Bird Height 150'
Tape Speed 2400



best 15

2210

M.L.L. 2150

M.L.L. 2150

LOCKWOOD SURVEY CORP., LTD.
GULF MX 111 AIRBORNE MAGNETOMETER PROFILE

Job No. J-3174 Flight No. 3
Date Flown Nov. 21 Aircraft M1A Line No. 24-N
Sensitivity Full Scale 12.00 Steps 1.000
Height Flown 2000 Tape Speed 4" PM

592

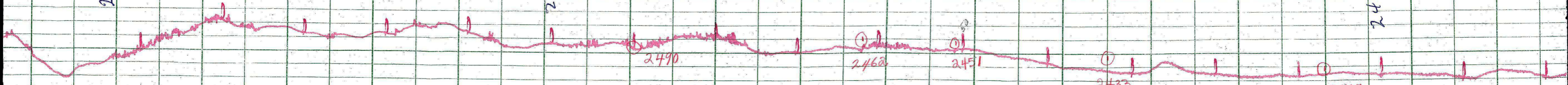
2550

25

h. 512

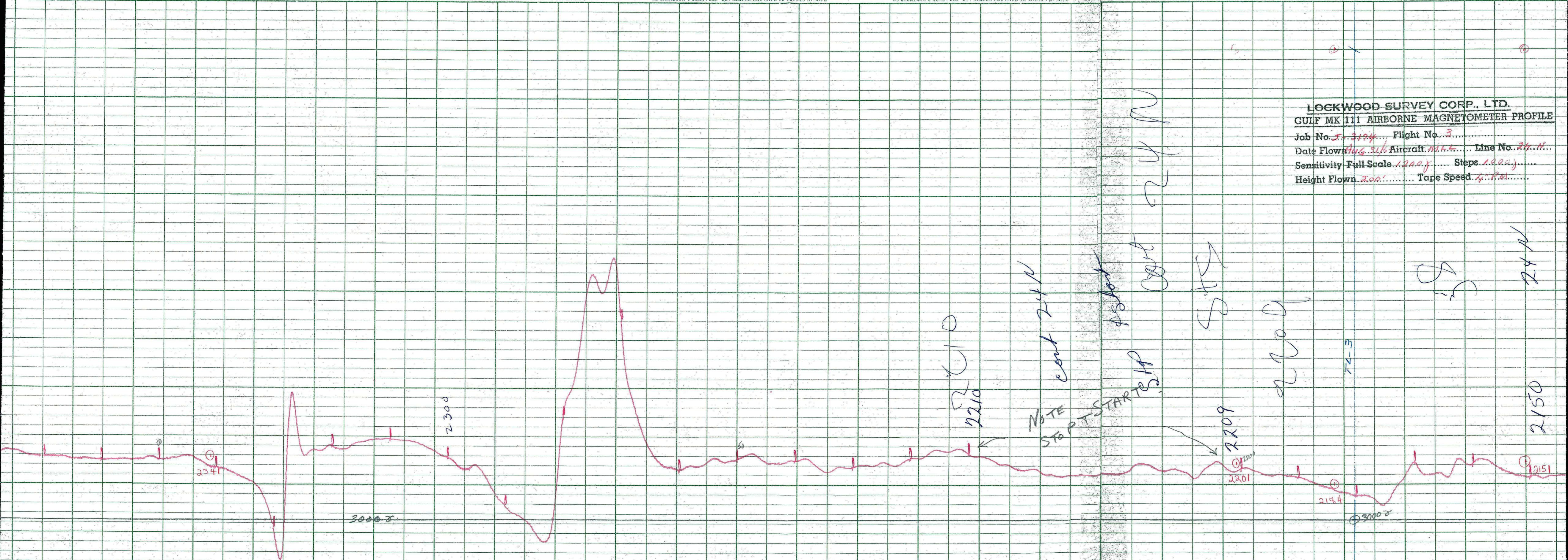
2500

2400



3000

LOCKWOOD SURVEY CORP., LTD.
 GULF MK III AIRBORNE MAGNETOMETER PROFILE
 Job No. 5-3194 Flight No. 3
 Date Flown Aug. 31/6 Aircraft M11-L Line No. 24-N
 Sensitivity Full Scale 1200γ Steps 100γ
 Height Flown 200' Tape Speed 4" P.M.



24N

2150

72-5

2200

SITZ

cont 24N

START

NOTE STOP START

2210

2300

2341

3000γ

3000γ

2194

2209
2201

2151