

LOCKWOOD SURVEY CORPORATION LIMITED

CONTRACT # G 3174
FLIGHT # 3
DATE FLOWN AUG 31/65
AIRCRAFT M.L.
FLYING HEIGHT 200'

PROFILES 2 CHART SPEED
GULF MAGNETOMETER Mk III 4"/MINUTE
SENSITIVITY 1200g
APN-1 RADIO ALTIMETER /MINUTE
SENSITIVITY

LINE No. 31-S

017346

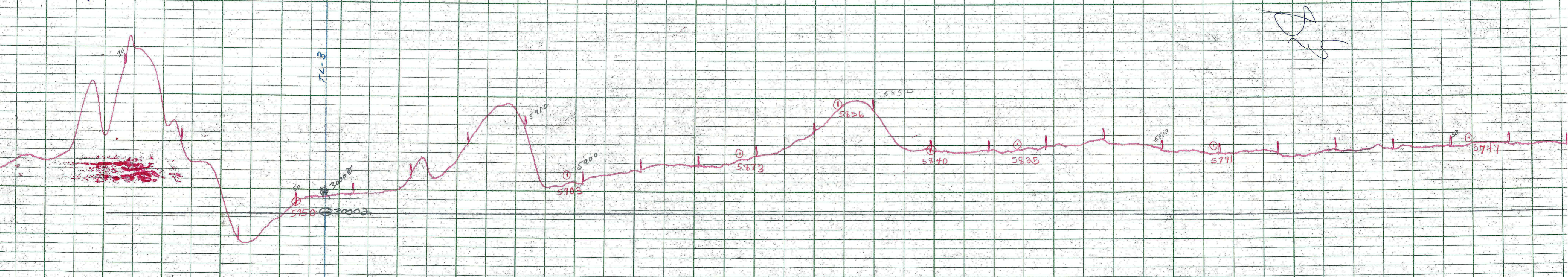
LOCKWOOD SURVEY CORP., LTD.
ELECTROMAGNETOMETER PROFILES.

Job No..... Flight No.....
Date Flown..... Aircraft..... Line No.....
Sensitivity, In Phase..... Out of Phase.....
Flying Height..... Bird Height.....
Tape Speed.....

LOCKWOOD SURVEY CORP., LTD.
GULF MK 111 AIRBORNE MAGNETOMETER PROFILE

Job No. J-3177 Flight No. 3
Date Flown Aug. 21/64 Aircraft M.A.L. Line No. 215
Sensitivity Full Scale 1200 Steps 1000
Height Flown 200' Tape Speed 4" PM

5985



①

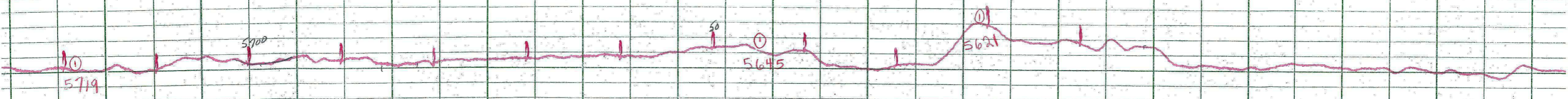
①

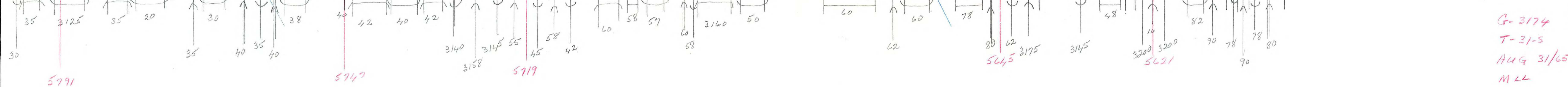
45

LOCKWOOD SURVEY CORP., LTD.
GULF MK III AIRBORNE MAGNETOMETER PROFILE

Job No. J-3124 Flight No. 315
Date Flown Aug. 31/65 Aircraft M44 Line No. 315
Sensitivity Full Scale 1.200 γ Steps 1.125 γ
Height Flown 200' Tape Speed 4" P.M.

Handwritten notes:
2195
10
12
13

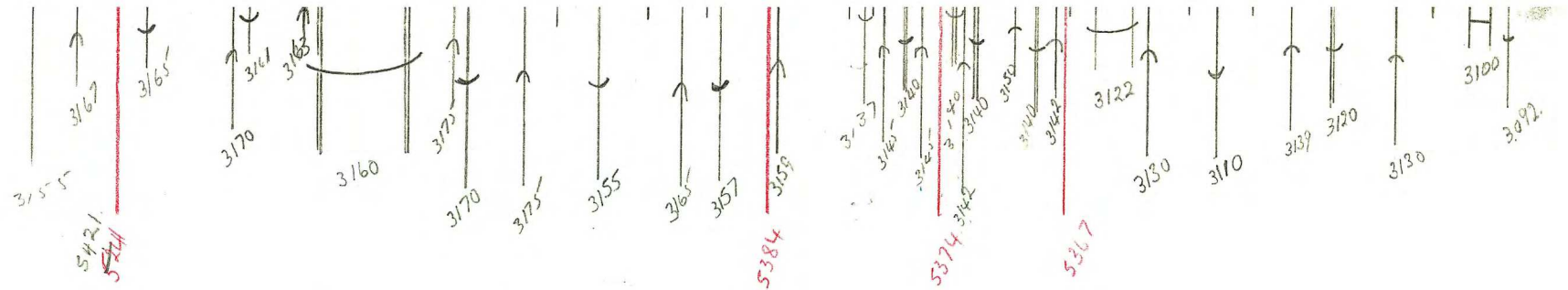




G-3174
 T-31-5
 AUG 31/65
 MLL

11

Feb 1/0
G 3174
FLT 3
aug 3/65
31-S



Feb 20
G 3174
FLT 3
aug 3/65
31-S

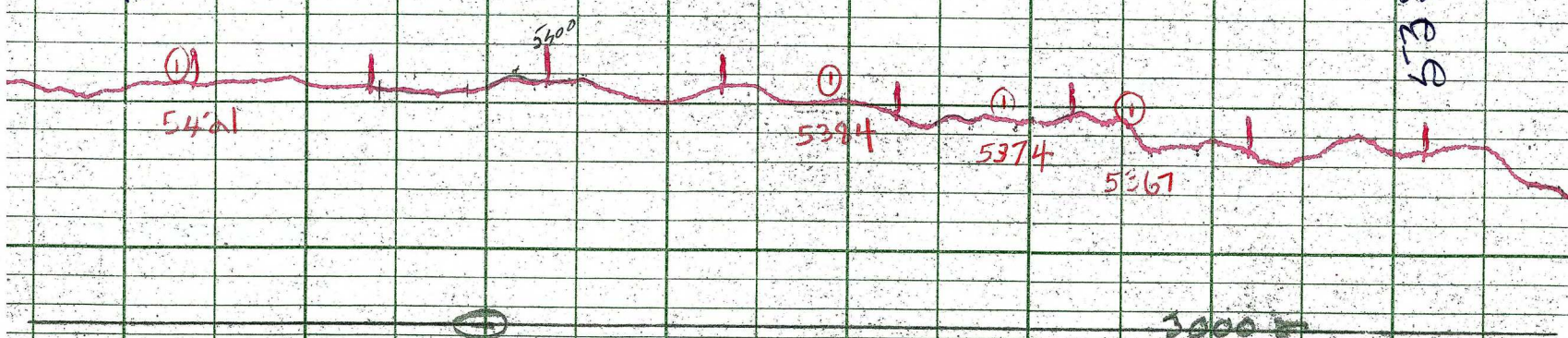
LOCKWOOD SURVEY CORP., LTD.
GULF MK 111 AIRBORNE MAGNETOMETER PROFILE

Job No. J-3174..... Flight No. 3.....
Date Flown AUG 31/65 Aircraft M11..... Line No. 115.....
Sensitivity Full Scale 1200γ..... Steps 1000γ.....
Height Flown 200'..... Tape Speed 4" PM.....

Handwritten notes on the left side of the grid, including a large 'N' and '29'.

5429

5369



LOCKWOOD SURVEY CORP., LTD.
ELECTROMAGNETOMETER PROFILES:

Job No. F-3174..... Flight No. 3.....
 Date Flown Aug. 3/45 Aircraft M4L..... Line No. 315.....
 Sensitivity, In Phase 104.90 E.S. Out of Phase 104.7 E.S.
 Flying Height 200'..... Bird Height 150'.....
 Tape Speed 34 P.M......

