

**LOCKWOOD SURVEY CORPORATION LIMITED**

CONTRACT # G 31.74  
FLIGHT # 4  
DATE FLOWN Sept 2/65  
AIRCRAFT MLL  
FLYING HEIGHT 200

PROFILES  
GULF MAGNETOMETER Mk III 4 /MINUTE  
SENSITIVITY 1200  
APN-1 RADIO ALTIMETER \_\_\_\_\_ /MINUTE  
SENSITIVITY \_\_\_\_\_

LINE No. 395

017354

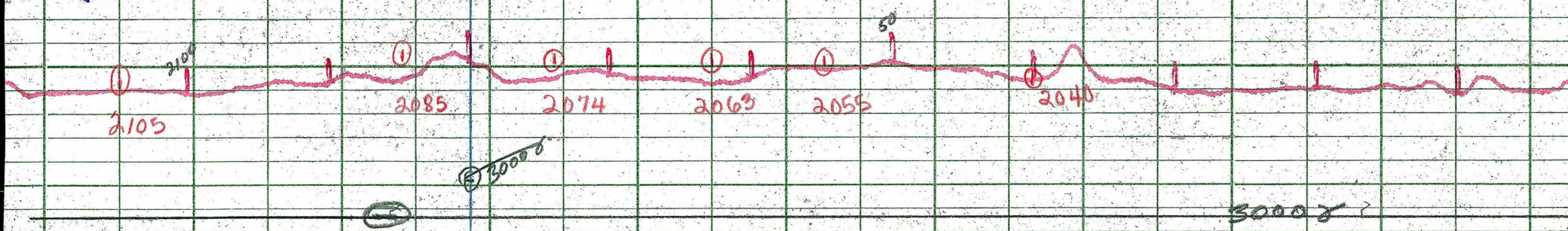
**LOCKWOOD SURVEY CORP., LTD.**  
**ELECTROMAGNETOMETER PROFILES.**

Job No..... Flight No.....  
Date Flown..... Aircraft..... Line No.....  
Sensitivity, In Phase..... Out of Phase.....  
Flying Height..... Bird Height.....  
Tape Speed.....

2109

2110

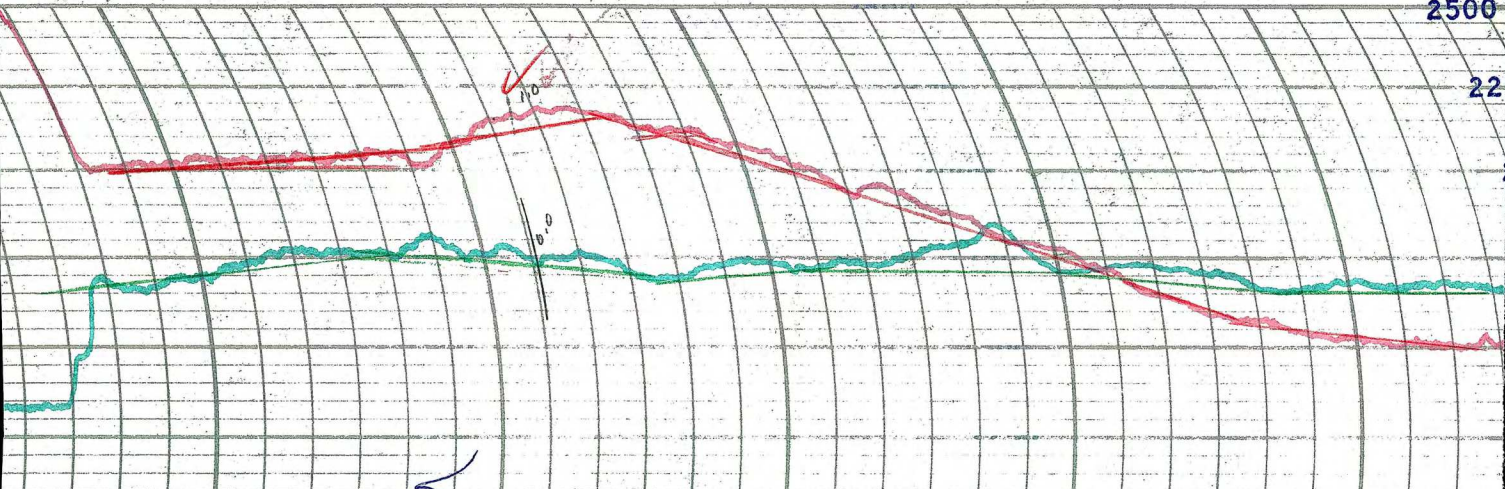
2111



Handwritten notes and scribbles in the lower-left quadrant, including a large '2109' and some illegible markings.

**LOCKWOOD SURVEY CORP., LTD.**  
**GULF MK 111 AIRBORNE MAGNETOMETER PROFILE**  
Job No. G-3174 Flight No. 4  
Date Flown Sept 2/60 Aircraft MKE Line No. 39.5  
Sensitivity Full Scale 1200γ Steps 1000γ  
Height Flown 200' Tape Speed 4" P.M.

2500  
22



25  
20  
10  
0

**LOCKWOOD SURVEY CORP., LTD.**  
**ELECTROMAGNETOMETER PROFILES.**

Job No. 2124 Flight No. 4  
 Date Flown SEPT 2/65 Aircraft M.L.L. Line No. 39-5  
 Sensitivity, In Phase .04% F.S. Cut of Phase .04% F.S.  
 Flying Height 200' Bird Height 150'  
 Tape Speed 3" PM

50  
25  
0

2105 2085 2074 2063 2053 2040

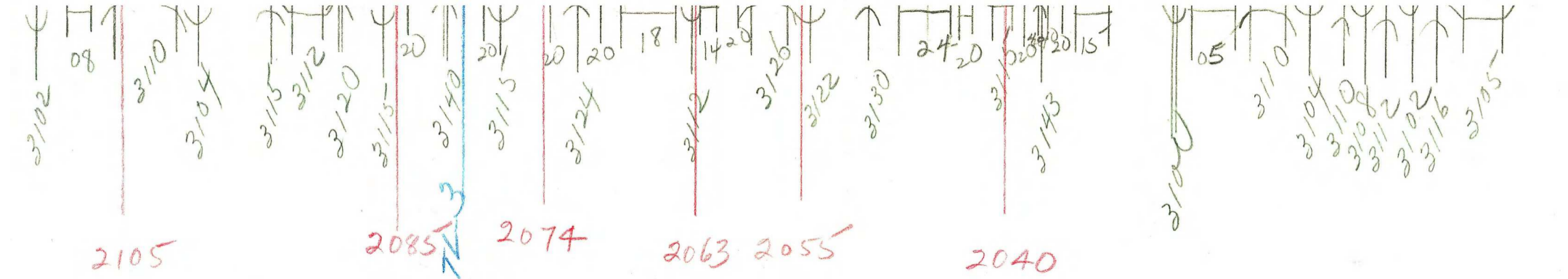
10  
0.2

G 3174 MLL

FLT #4

Sept. 2/65

gc. 395



G 3174 - MLL

Sept 2/65

FLT #4

39-5

gc