

LOCKWOOD SURVEY CORPORATION LIMITED

CONTRACT # G-3174
FLIGHT # 4
DATE FLOWN Sept 2/65
AIRCRAFT MLL
FLYING HEIGHT 200'

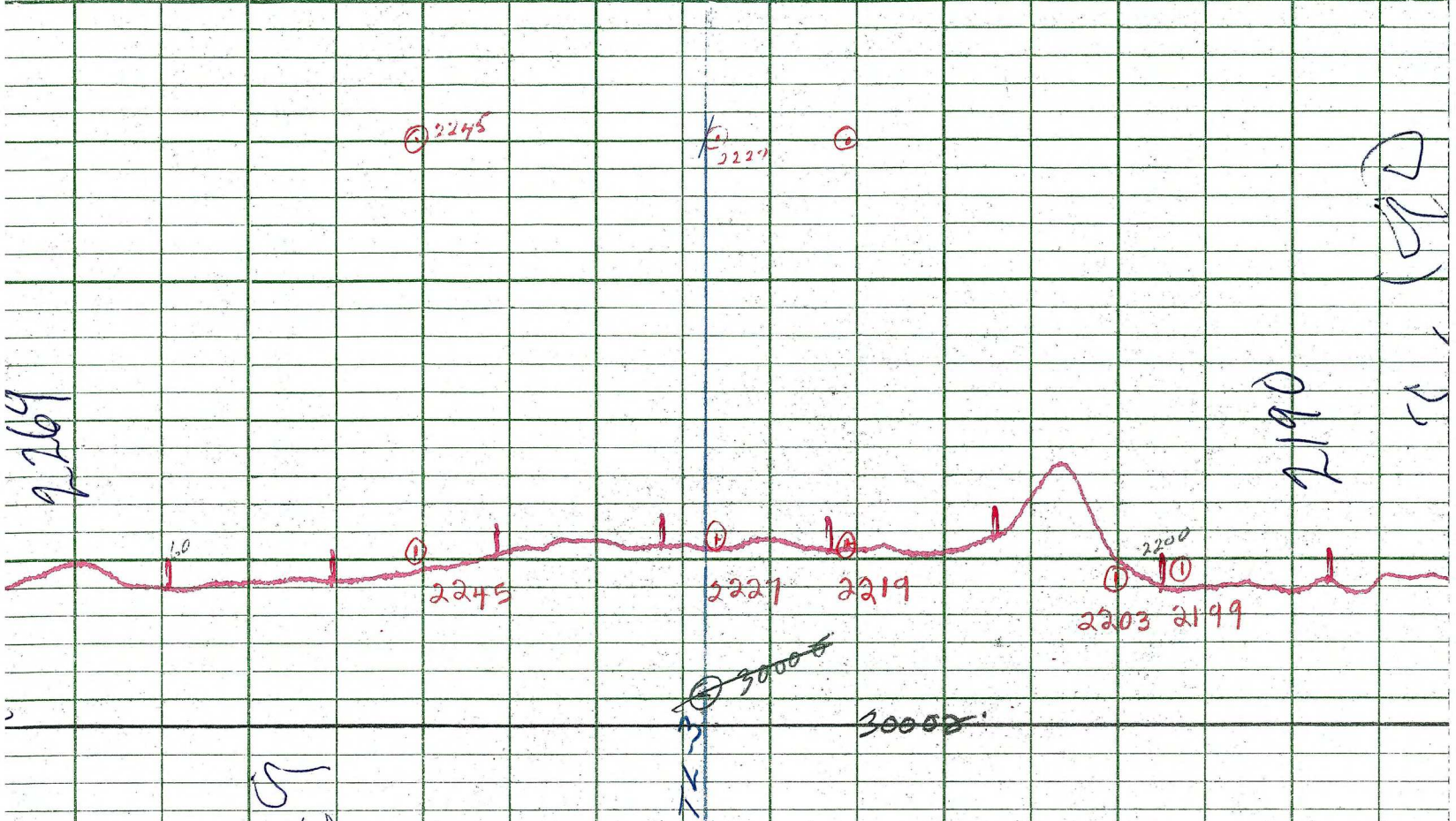
PROFILES
GULF MAGNETOMETER Mk III 4" P./MINUTE
SENSITIVITY 1200 8
APN-1 RADIO ALTIMETER /MINUTE
SENSITIVITY

LINE No. 41-5

017356

LOCKWOOD SURVEY CORP., LTD.
ELECTROMAGNETOMETER PROFILES.

Job No..... Flight No.....
Date Flown..... Aircraft..... Line No.....
Sensitivity, In Phase..... Out of Phase.....
Flying Height..... Bird Height.....
Tape Speed.....



2269
 2245
 2227
 2219
 2203
 2199

LOCKWOOD SURVEY CORP., LTD.
GULF MK 111 AIRBORNE MAGNETOMETER PROFILE
 Job No. J-3174 Flight No. 4
 Date Flown SEPT 2/65 Aircraft M44 Line No. 41-5
 Sensitivity Full Scale 1200γ Steps 100γ
 Height Flown 2000' Tape Speed 4" P.M.

2500

2250

2000

1750

1500

LOCKWOOD SURVEY CORP., LTD.
ELECTROMAGNETIC PROFILES

Job No. J-3174..... Flight No. 4.....
Date Flown SEPT. 2/68 Aircraft MLL..... Line No. 415.....
Sensitivity, In Phase 0.4% F.S...... Out of Phase 0.4% F.S......
Flying Height 200'..... 750.. Bird Height 150'.....
Tape Speed 3" PM.....

500

250

2245

2227

2219

2203

2199



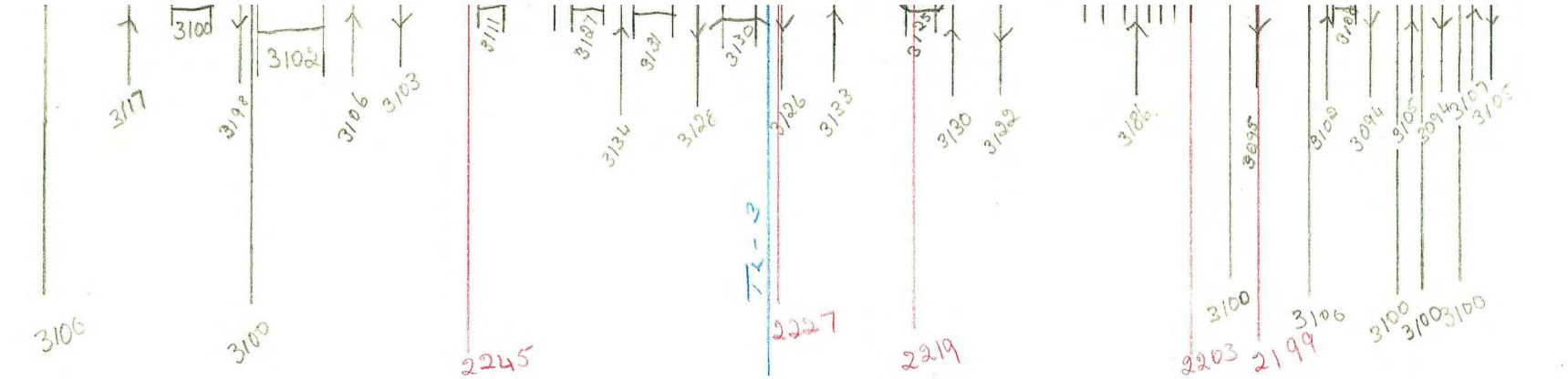
500

500

500

500

Job No. G-3174
 FLT No. 4
 Date - Sept 2/65
 L. No. 41-S



Job No. - G-3174
 FLT No. - 4
 Date - Sept 2/65
 L. No. - 41-S
 AT.