

LOCKWOOD SURVEY CORPORATION LIMITED

CONTRACT # G-3174
FLIGHT # 4
DATE FLOWN Sept 2/65
AIRCRAFT MLL
FLYING HEIGHT 200'

PROFILES
GULF MAGNETOMETER Mk III 4" P/MINUTE
SENSITIVITY 12008
APN-1 RADIO ALTIMETER _____/MINUTE
SENSITIVITY _____

LINE No. 42-N

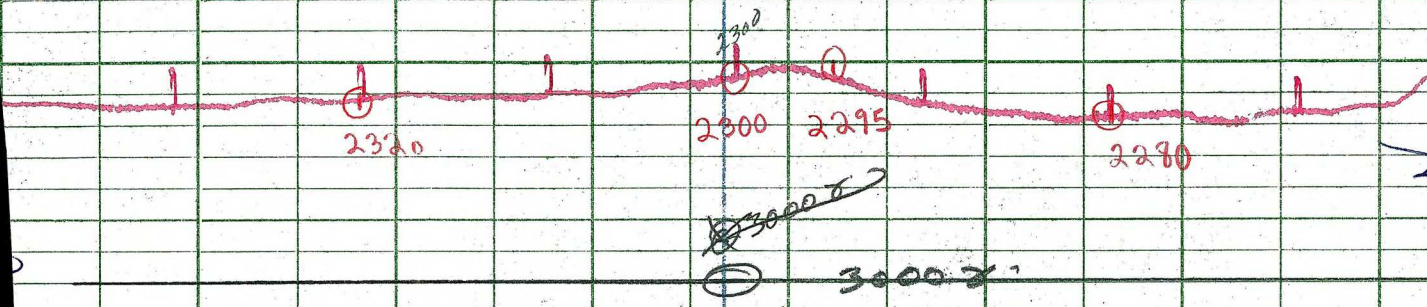
017357

LOCKWOOD SURVEY CORP., LTD.
ELECTROMAGNETOMETER PROFILES.

Job No..... Flight No.....
Date Flown..... Aircraft..... Line No.....
Sensitivity, In Phase..... Out of Phase.....
Flying Height..... Bird Height.....
Tape Speed.....

2339

2270



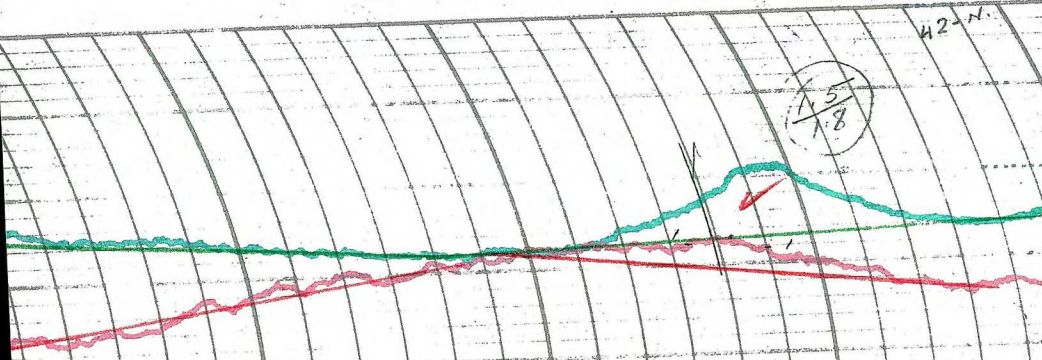
Vertical handwritten notes on the left side of the grid, including a large 'S' and other illegible characters.

LOCKWOOD SURVEY CORP., LTD.
GULF MK 111 AIRBORNE MAGNETOMETER PROFILE

Job No. *J-3174* Flight No. *4*
 Date Flown *SEPT. 2/65* Aircraft *MLL* Line No. *2*
 Sensitivity Full Scale *1.200* Steps *1.000*
 Height Flown *1000* Tape Speed *4" P.M.*

42-N

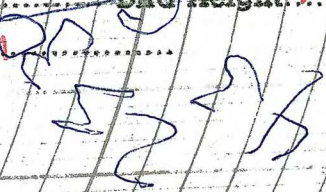
15/8



LOCKWOOD SURVEY CORP., LTD.
ELECTROMAGNETOMETER PROFILES

Job No. J. 3174..... Flight No. 4.....
 Date Flown SEPT 24/5 Aircraft M.L.L. Line No. 42N.....
 Sensitivity In Phase 0.4 % F.S. Out of Phase 0.4 % F.S.
 Flying Height 200'..... Bird Height 150'.....
 Tape Speed 31 P.M......

150'

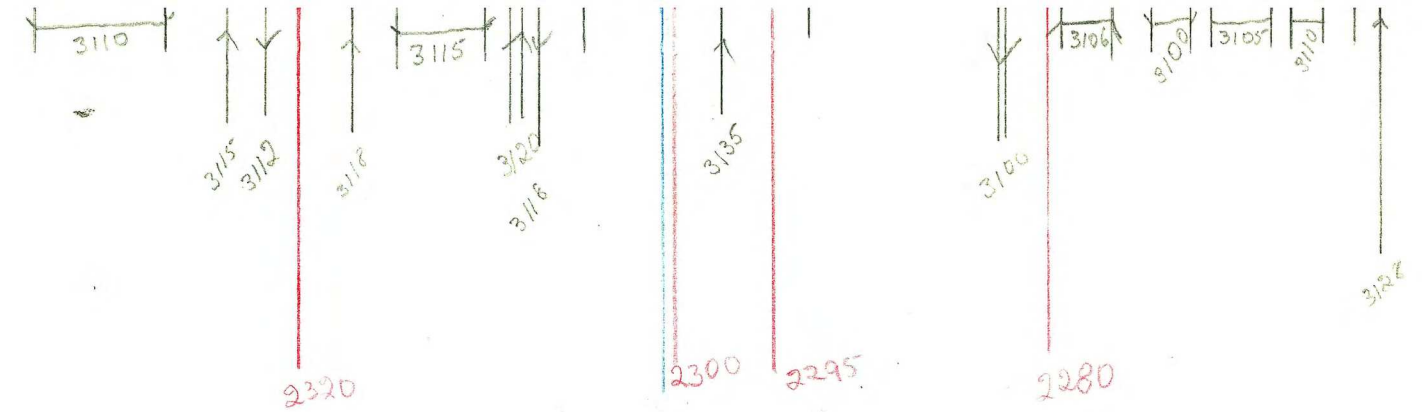


200'

2320 2300 2295 2280



Job No - G-3174
FLT No - 4
Date - Sept 2/65
L. No - 42-N



Job No - G-3174
FLT No - 4
Date - Sept 2/65
L. No - 42-N

AT