

**LOCKWOOD SURVEY CORPORATION LIMITED**

CONTRACT # 3174  
FLIGHT # 4  
DATE FLOWN SEPT-2-65  
AIRCRAFT CF-MLL  
FLYING HEIGHT 200'

PROFILES  
GULF MAGNETOMETER Mk III 4 /MINUTE  
SENSITIVITY 1200γ  
APN-1 RADIO ALTIMETER \_\_\_\_\_ /MINUTE  
SENSITIVITY \_\_\_\_\_

LINE No. 46-N

017361

**LOCKWOOD SURVEY CORP.. LTD.**  
**ELECTROMAGNETOMETER PROFILES.**

Job No..... Flight No.....  
Date Flown..... Aircraft..... Line No.....  
Sensitivity, In Phase..... Out of Phase.....  
Flying Height..... Bird Height.....  
Tape Speed.....

5276

4776

2700

2677

2667

2663

2647

2641

2627

2600

3000

3

5112

5276

**LOCKWOOD SURVEY CORP., LTD.**  
**GULF MK 111 AIRBORNE MAGNETOMETER PROFILE**  
 Job No. J-3174 Flight No. 4  
 Date Flown SEPT 2/55 Aircraft MILL Line No. 46-N  
 Sensitivity Full Scale 1200γ Steps 1000γ  
 Height Flown 200' Tape Speed 4" P.M.

47

2700

1/2

MADE IN U.S.A.

ESTERLINE ANG

2600

# LOCKWOOD SURVEY CORP., LTD.

## ELECTROMAGNETOMETER PROFILES.

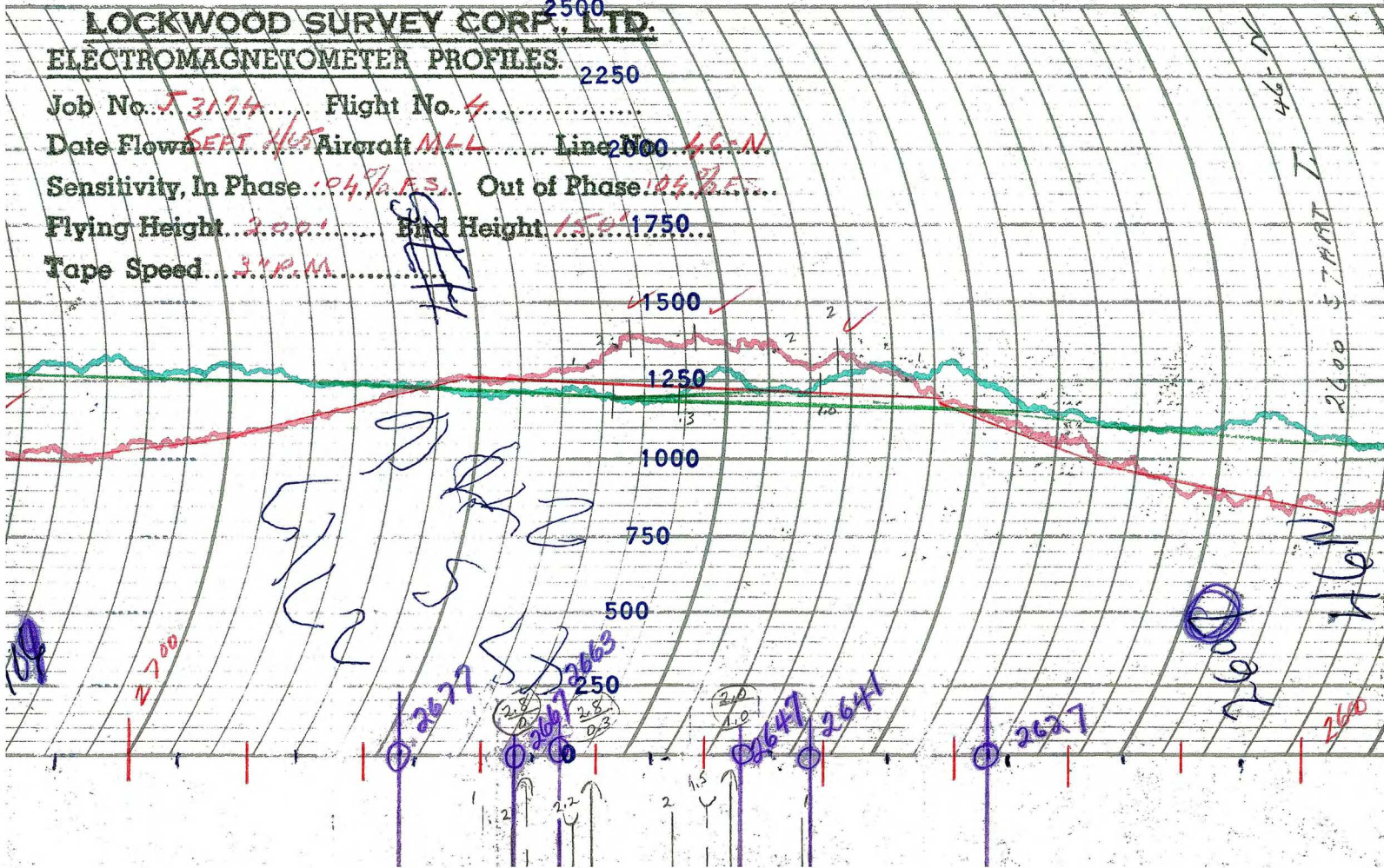
Job No. J 3174..... Flight No. 4.....

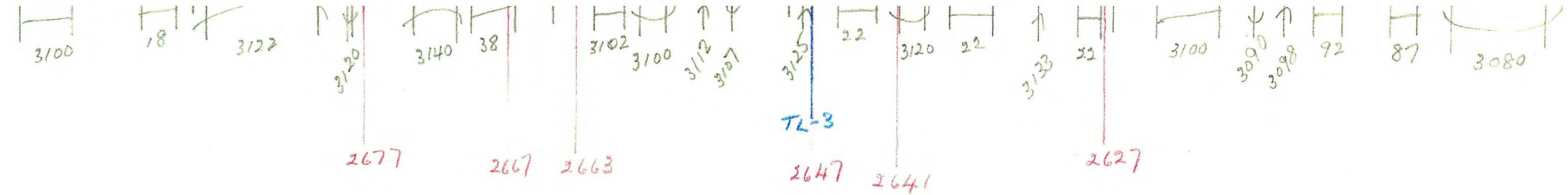
Date Flown SEPT 11/55..... Aircraft M4L..... Line 2000 4.6-N

Sensitivity, In Phase .04% F.S...... Out of Phase 10% B.F.

Flying Height 2000..... Bird Height 1500.....

Tape Speed 34 P.M......





G-3174  
 T-46-N  
 SEPT-2-65  
 MLL  
 FLIGHT-4

M.R.