

LOCKWOOD SURVEY CORPORATION LIMITED

CONTRACT # C-3174
FLIGHT # 4, 5
DATE FLOWN SEPT 2/65
" 3/65
AIRCRAFT MLL
FLYING HEIGHT 2001

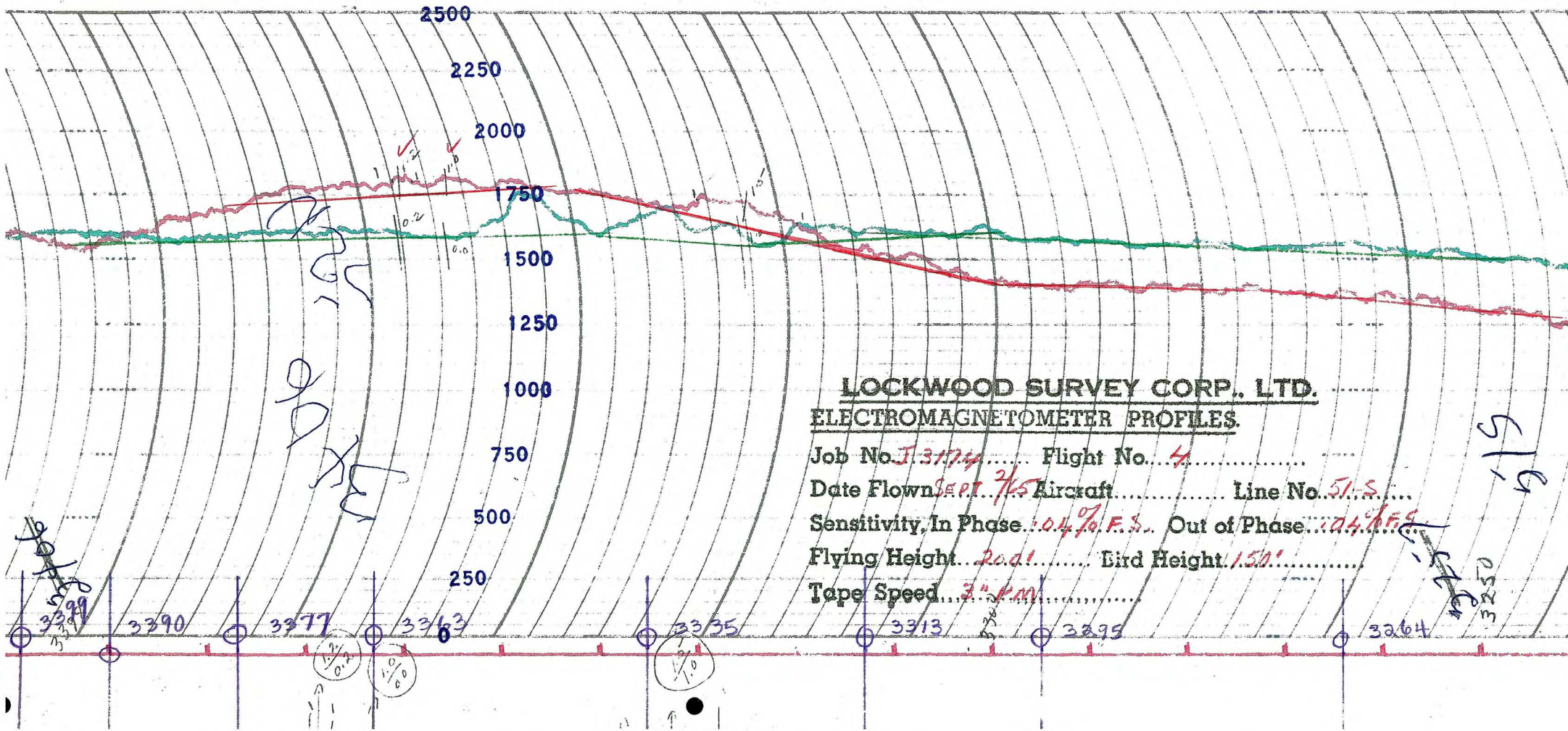
PROFILES
GULF MAGNETOMETER Mk III 4"/MINUTE
SENSITIVITY 1200g
APN-1 RADIO ALTIMETER /MINUTE
SENSITIVITY

LINE No. 51-S & 51-N

017366

LOCKWOOD SURVEY CORP., LTD.
ELECTROMAGNETIC PROFILES

Job No..... Flight No.....
Date Flown..... Aircraft..... Line No.....
Sensitivity, In Phase..... Out of Phase.....
Flying Height..... Bird Height.....
Tape Speed.....



LOCKWOOD SURVEY CORP., LTD.
ELECTROMAGNETOMETER PROFILES.

Job No. J-3174 Flight No. 4
 Date Flown SEPT. 7/5 Aircraft..... Line No. 51-S
 Sensitivity, In Phase: 0.4% F.S. Out of Phase: 0.4% F.S.
 Flying Height: 200' Bird Height: 150'
 Tape Speed: 3" P.M.

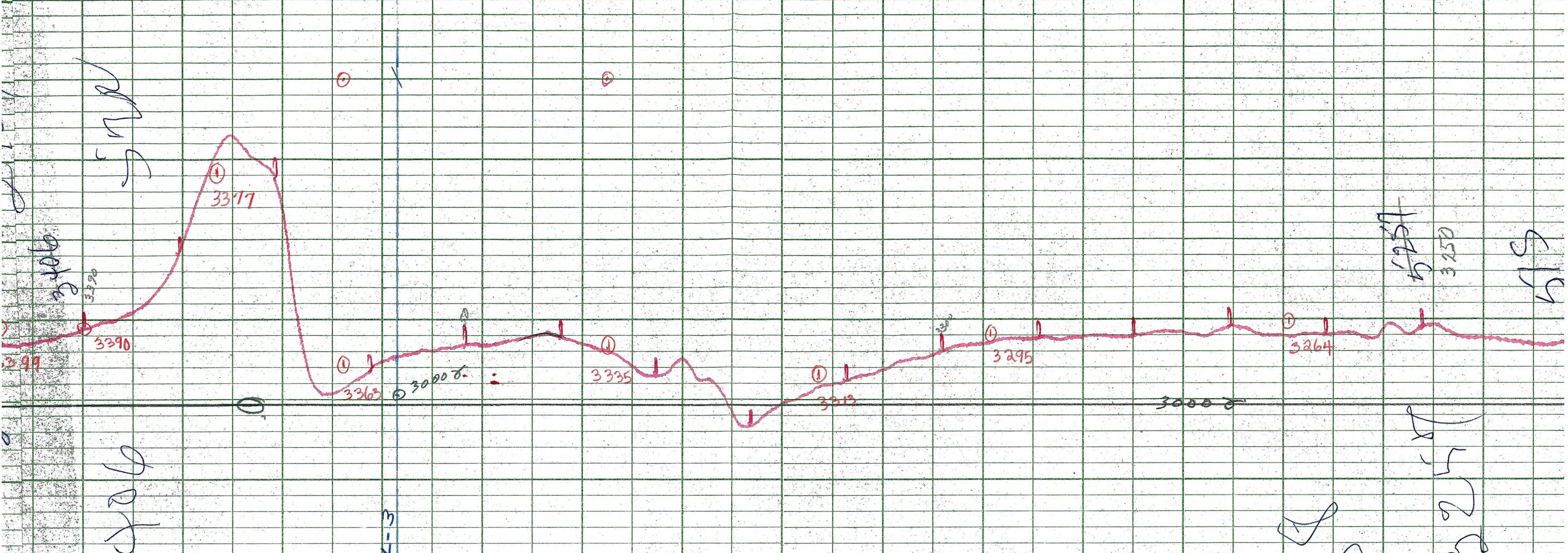
51-S
3250

3389

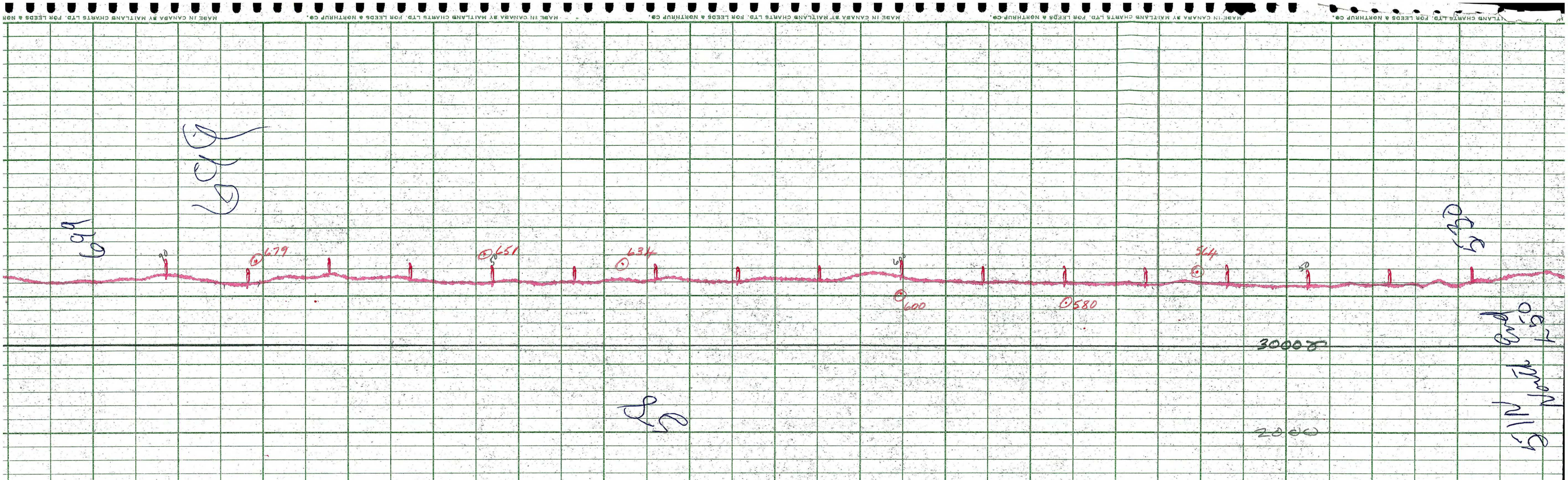
1/2
0.4

1/4
1.0

3264



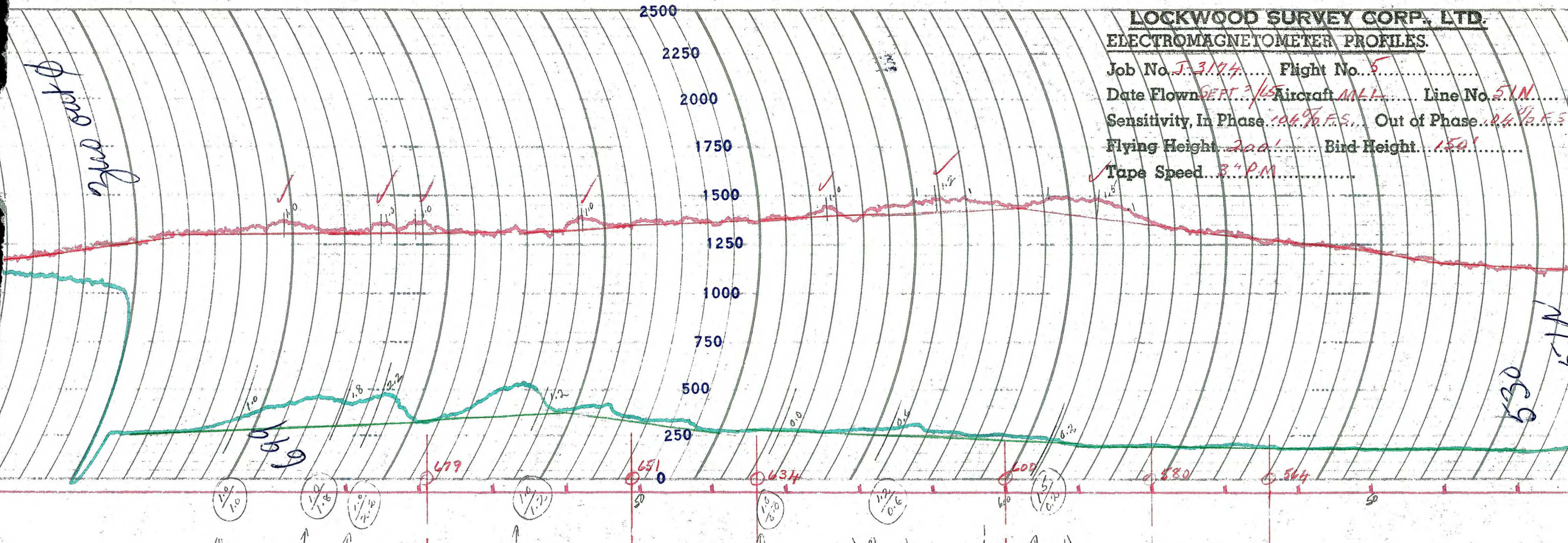
LOCKWOOD SURVEY CORP., LTD.
GULF MK III AIRBORNE MAGNETOMETER PROFILE
 Job No. I-3174 Flight No. 4
 Date Flown SEPT. 2/68 Aircraft M.L.L. Line No. 51-5
 Sensitivity Full Scale 1200γ Steps 1000γ
 Height Flown 200' Tape Speed 4" PM



LOCKWOOD SURVEY CORP., LTD.
GULF MK 111 AIRBORNE MAGNETOMETER PROFILE
 Job No. J-3174 Flight No. 5
 Date Flown SEPT. 3/65 Aircraft M11 Line No. 5-N
 Sensitivity Full Scale 1200γ Steps 100γ
 Height Flown 200' Tape Speed 4" PM

LOCKWOOD SURVEY CORP., LTD.
ELECTROMAGNETOMETER PROFILES.

Job No. *J-3194* Flight No. *5*
Date Flown *SEPT. 3/45* Aircraft *ML-1* Line No. *51N*
Sensitivity, In Phase. *104.70 F.S.* Out of Phase. *24.16 F.S.*
Flying Height. *200'* Bird Height. *150'*
Tape Speed. *3" P.M.*



1/10
1/10

1/16
1/16

1/12
1/12

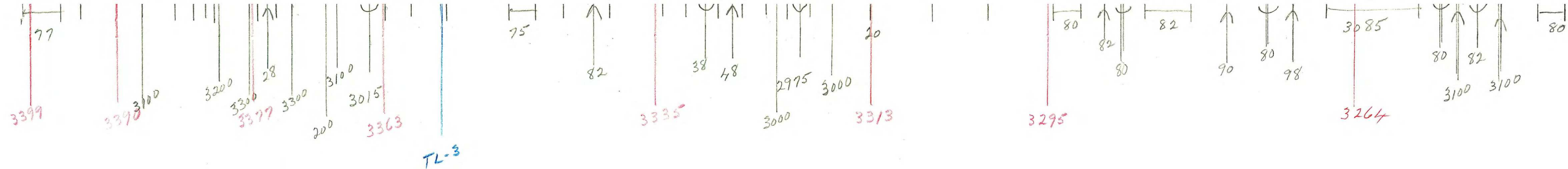
1/12
1/12

1/8
1/8

1/12
1/12

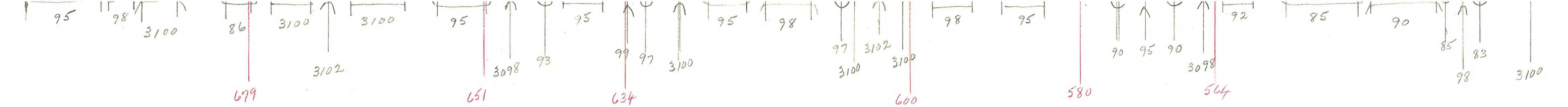
1/12
1/12

50



G 3174
 T-515
 SEPT 2/65
 FLT. 4

J.B.



G-3174
 T-51-N
 SEPT 3/65
 FLT 5

JB