

LOCKWOOD SURVEY CORPORATION LIMITED

CONTRACT # G-3174
FLIGHT # 4
DATE FLOWN Sept 2/65
AIRCRAFT MLL
FLYING HEIGHT 200'

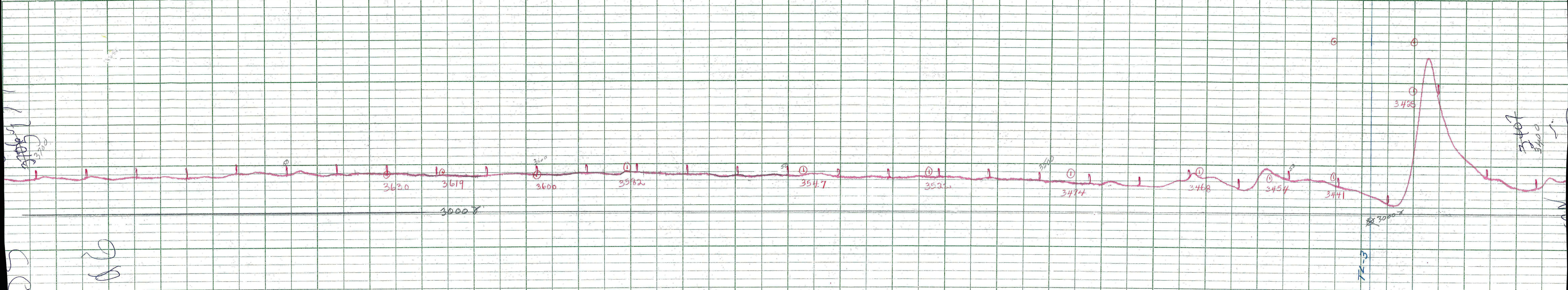
PROFILES CHART SPEED
GULF MAGNETOMETER Mk III 4 /MINUTE
SENSITIVITY 12008
APN-1 RADIO ALTIMETER /MINUTE
SENSITIVITY

LINE No. 52-N

017367

LOCKWOOD SURVEY CORP., LTD.
ELECTROMAGNETOMETER PROFILES.

Job No..... Flight No.....
Date Flown..... Aircraft..... Line No.....
Sensitivity, In Phase..... Out of Phase.....
Flying Height..... Bird Height.....
Tape Speed.....

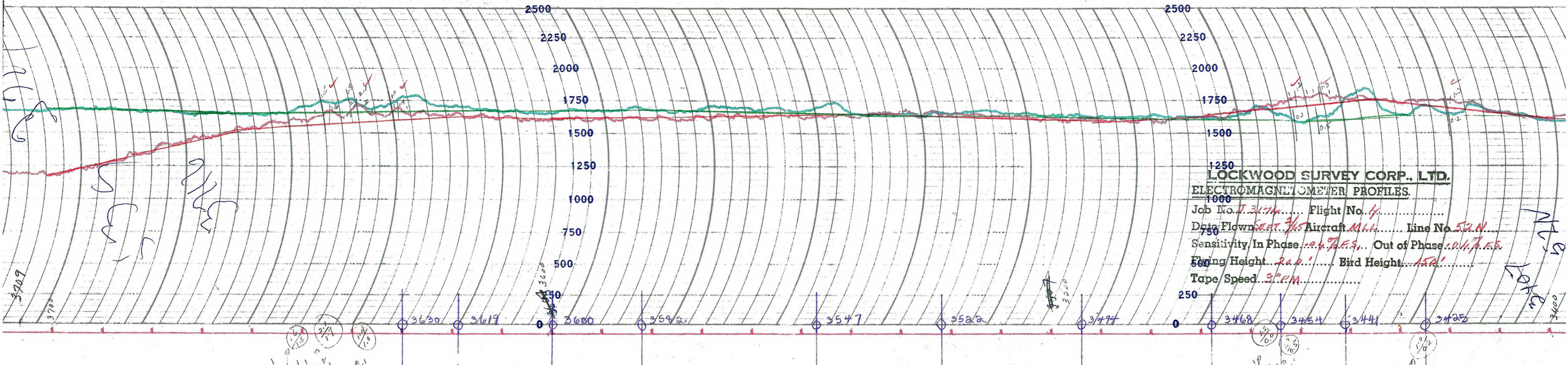


Handwritten notes on the left margin, including '3700' and other illegible scribbles.

Handwritten notes on the right margin, including '3400' and other illegible scribbles.

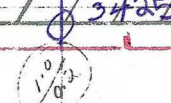
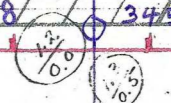
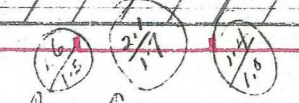
LOCKWOOD SURVEY CORP., LTD.
GULF MK III AIRBORNE MAGNETOMETER PROFILE
 Job No. J-3174 Flight No. 4
 Date Flown SEP. 2, 1958 Aircraft M.L.L. Line No. 5-2-1
 Sensitivity Full Scale 1.5 GAY Steps 1.0 GAY
 Height Flown 200 Tape Speed 1.2 MM

LOCKWOOD SURVEY CORP., LTD.
GULF MK III AIRBORNE MAGNETOMETER PROFILE
 Job No. J-3174 Flight No. 4
 Date Flown SEP. 2, 1958 Aircraft M.L.L. Line No. 5-2-1
 Sensitivity Full Scale 1.5 GAY Steps 1.0 GAY
 Height Flown 200 Tape Speed 1.2 MM



1250
LOCKWOOD SURVEY CORP., LTD.
 ELECTROMETER PROFILES.

1000
 Job No. *J 3174* Flight No. *4*
 Date Flown *SEPT. 7/65* Aircraft *M.I.I.* Line No. *52N*
 Sensitivity In Phase *0.4 F.S.* Out of Phase *0.4 F.S.*
 Flying Height *200'* Bird Height *150'*
 Tape Speed *3" PM*



Job No
 Date - 5 Sept 2/69
 L.N. - 52-2/69

